



[Go to Product page](#)

Datasheet for ABIN7158736
anti-LYSMD3 antibody (AA 1-127)

1 Image

Overview

Quantity:	100 µg
Target:	LYSMD3
Binding Specificity:	AA 1-127
Reactivity:	Human
Host:	Rabbit
Clonality:	Polyclonal
Conjugate:	This LYSMD3 antibody is un-conjugated
Application:	ELISA, Western Blotting (WB)

Product Details

Immunogen:	Recombinant Human LysM and putative peptidoglycan-binding domain-containing protein 3 protein (1-127AA)
Isotype:	IgG
Cross-Reactivity:	Human, Mouse
Purification:	>95%, Protein G purified

Target Details

Target:	LYSMD3
Alternative Name:	LYSMD3 (LYSMD3 Products)
Background:	1110030H10Rik antibody, BC003322 antibody, lysM and putative peptidoglycan binding domain

Target Details

containing protein 3 antibody, LysM and putative peptidoglycan-binding domain-containing protein 3 antibody, LYSM3_HUMAN antibody, lysmd3 antibody, RGD1308805 antibody

UniProt: [Q7Z3D4](#)

Application Details

Application Notes: Recommended dilution: WB:1:1000-1:5000,

Restrictions: For Research Use only

Handling

Format: Liquid

Buffer: Preservative: 0.03 % Proclin 300
Constituents: 50 % Glycerol, 0.01M PBS, PH 7.4

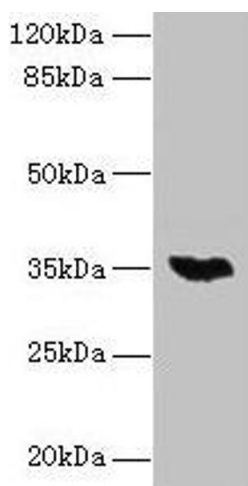
Preservative: ProClin

Precaution of Use: This product contains ProClin: a POISONOUS AND HAZARDOUS SUBSTANCE which should be handled by trained staff only.

Storage: -20 °C,-80 °C

Storage Comment: Upon receipt, store at -20°C or -80°C. Avoid repeated freeze.

Images



Western Blotting

Image 1. Western blot All lanes: LYSMD3 antibody at 6 μ g/mL + Mouse heart tissue Secondary Goat polyclonal to rabbit IgG at 1/10000 dilution Predicted band size: 35, 15, 18 kDa Observed band size: 35 kDa