



[Go to Product page](#)

Datasheet for ABIN7158740  
**anti-ACP6 antibody (AA 35-324)**

3 Images

Overview

|                      |                                                          |
|----------------------|----------------------------------------------------------|
| Quantity:            | 100 µg                                                   |
| Target:              | ACP6                                                     |
| Binding Specificity: | AA 35-324                                                |
| Reactivity:          | Human                                                    |
| Host:                | Rabbit                                                   |
| Clonality:           | Polyclonal                                               |
| Conjugate:           | This ACP6 antibody is un-conjugated                      |
| Application:         | Western Blotting (WB), ELISA, Immunohistochemistry (IHC) |

Product Details

|                   |                                                                               |
|-------------------|-------------------------------------------------------------------------------|
| Immunogen:        | Recombinant Human Lysophosphatidic acid phosphatase type 6 protein (35-324AA) |
| Isotype:          | IgG                                                                           |
| Cross-Reactivity: | Human, Mouse, Rat                                                             |
| Purification:     | >95%, Protein G purified                                                      |

Target Details

|                   |                                                                                                                                                                                       |
|-------------------|---------------------------------------------------------------------------------------------------------------------------------------------------------------------------------------|
| Target:           | ACP6                                                                                                                                                                                  |
| Alternative Name: | ACP6 ( <a href="#">ACP6 Products</a> )                                                                                                                                                |
| Background:       | Background: Hydrolyzes lysophosphatidic acid (LPA) containing a medium length fatty acid chain to the corresponding monoacylglycerol. Has highest activity with lysophosphatidic acid |

## Target Details

---

containing myristate (C14:0), monounsaturated oleate (C18:1) or palmitate (C16:0), and lower activity with C18:0 and C6:0 lysophosphatidic acid.

Aliases: Acid phosphatase 6 antibody, Acid phosphatase 6, lysophosphatidic antibody, Acid phosphatase like 1 antibody, Acid phosphatase like protein 1 antibody, Acid phosphatase-like protein 1 antibody, ACP6 antibody, ACPL1 antibody, LPAP antibody, Lysophosphatidic acid phosphatase 6 antibody, Lysophosphatidic acid phosphatase type 6 antibody, Lysophosphatidic acid phosphatase type 6 precursor antibody, lysophosphatidic antibody, PACPL1 antibody, PPA6\_HUMAN antibody

---

UniProt: [Q9NPH0](#)

## Application Details

---

Application Notes: Recommended dilution: WB:1:500-1:5000, IHC:1:20-1:200,

Restrictions: For Research Use only

## Handling

---

Format: Liquid

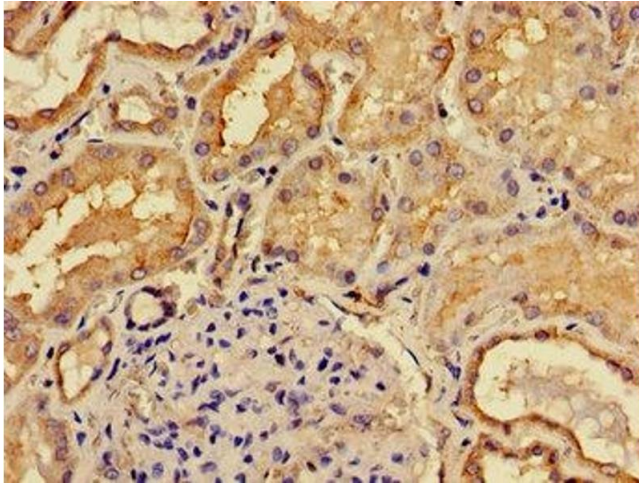
Buffer: Preservative: 0.03 % Proclin 300  
Constituents: 50 % Glycerol, 0.01M PBS, pH 7.4

Preservative: ProClin

Precaution of Use: This product contains ProClin: a POISONOUS AND HAZARDOUS SUBSTANCE which should be handled by trained staff only.

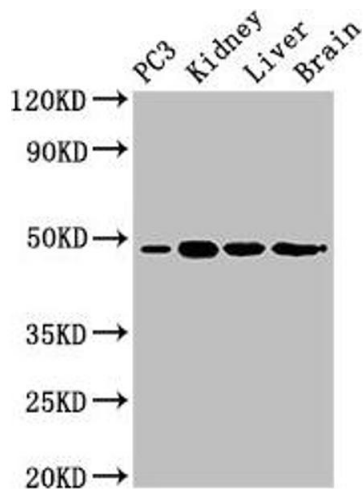
Storage: -20 °C,-80 °C

Storage Comment: Upon receipt, store at -20°C or -80°C. Avoid repeated freeze.



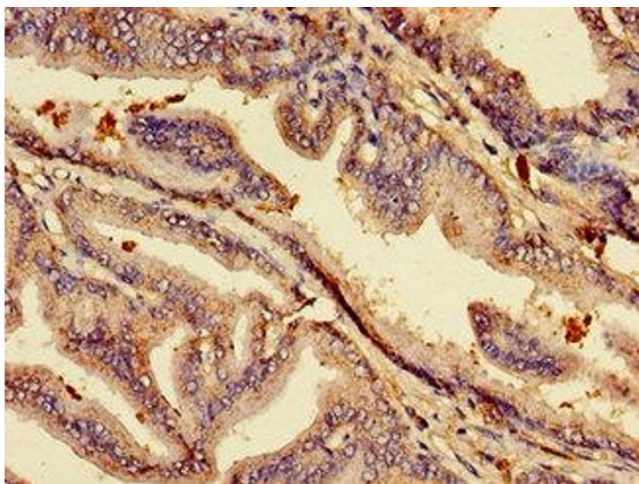
### Immunohistochemistry

**Image 1.** Immunohistochemistry of paraffin-embedded human kidney tissue using ABIN7158740 at dilution of 1:100



### Western Blotting

**Image 2.** Western Blot Positive WB detected in: PC-3 whole cell lysate, Mouse kidney tissue, Mouse liver tissue, Rat brain tissue All lanes: ACP6 antibody at 3 µg/mL Secondary Goat polyclonal to rabbit IgG at 1/50000 dilution Predicted band size: 49, 31 kDa Observed band size: 49 kDa



### Immunohistochemistry

**Image 3.** Immunohistochemistry of paraffin-embedded human prostate tissue using ABIN7158740 at dilution of 1:100