



[Go to Product page](#)

Datasheet for ABIN7158776  
**anti-PRCP antibody (AA 347-443)**

1 Image

### Overview

Quantity:	100 µg
Target:	PRCP
Binding Specificity:	AA 347-443
Reactivity:	Human
Host:	Rabbit
Clonality:	Polyclonal
Conjugate:	This PRCP antibody is un-conjugated
Application:	ELISA, Immunofluorescence (IF)

### Product Details

Immunogen:	Recombinant Human Lysosomal Pro-X carboxypeptidase protein (347-443AA)
Isotype:	IgG
Cross-Reactivity:	Human
Purification:	>95%, Protein G purified

### Target Details

Target:	PRCP
Alternative Name:	PRCP ( <a href="#">PRCP Products</a> )
Background:	Background: Cleaves C-terminal amino acids linked to proline in peptides such as angiotensin II, III and des-Arg9-bradykinin. This cleavage occurs at acidic pH , but enzymatic activity is

## Target Details

---

retained with some substrates at neutral pH .

Aliases: Angiotensinase C antibody, HUMPCP antibody, Lysosomal carboxypeptidase C antibody, Lysosomal Pro X carboxypeptidase antibody, Lysosomal Pro-X carboxypeptidase antibody, MGC2202 antibody, PCP antibody, PCP\_HUMAN antibody, PRCP antibody, Proline carboxypeptidase antibody, Prolylcarboxypeptidase (angiotensinase C) antibody, Prolylcarboxypeptidase antibody, prolylcarboxypeptidase isoform 1 preproprotein antibody

UniProt: [P42785](#)

## Application Details

---

Application Notes: Recommended dilution: IF:1:50-1:200,

Restrictions: For Research Use only

## Handling

---

Format: Liquid

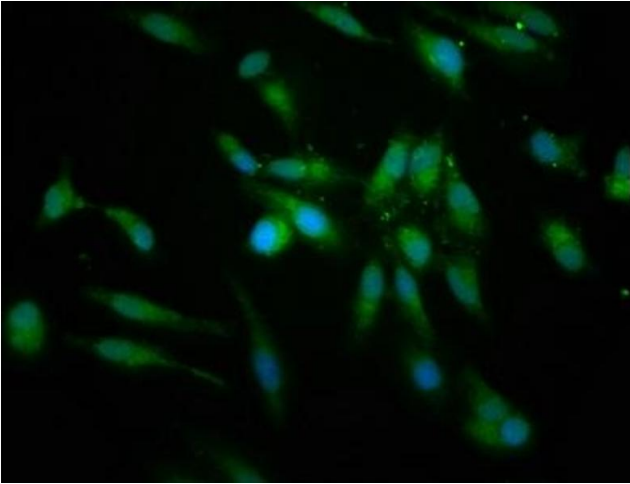
Buffer: Preservative: 0.03 % Proclin 300  
Constituents: 50 % Glycerol, 0.01M PBS, pH 7.4

Preservative: ProClin

Precaution of Use: This product contains ProClin: a POISONOUS AND HAZARDOUS SUBSTANCE which should be handled by trained staff only.

Storage: -20 °C,-80 °C

Storage Comment: Upon receipt, store at -20°C or -80°C. Avoid repeated freeze.



#### Immunofluorescence

**Image 1.** Immunofluorescence staining of HeLa cells with ABIN7158776 at 1:166, counter-stained with DAPI. The cells were fixed in 4% formaldehyde, permeabilized using 0.2% Triton X-100 and blocked in 10% normal Goat Serum. The cells were then incubated with the antibody overnight at 4°C. The secondary antibody was Alexa Fluor 488-conjugated AffiniPure Goat Anti-Rabbit IgG(H+L).