



[Go to Product page](#)

Datasheet for ABIN7158804
anti-LAMP2 antibody (AA 54-268)

3 Images

Overview

| | |
|----------------------|---|
| Quantity: | 100 µg |
| Target: | LAMP2 |
| Binding Specificity: | AA 54-268 |
| Reactivity: | Human |
| Host: | Rabbit |
| Clonality: | Polyclonal |
| Conjugate: | This LAMP2 antibody is un-conjugated |
| Application: | Western Blotting (WB), Immunohistochemistry (IHC), ELISA, Immunofluorescence (IF) |

Product Details

| | |
|-------------------|--|
| Immunogen: | Recombinant Human Lysosome-associated membrane glycoprotein 2 protein (54-268AA) |
| Isotype: | IgG |
| Cross-Reactivity: | Human, Mouse |
| Purification: | >95%, Protein G purified |

Target Details

| | |
|-------------------|--|
| Target: | LAMP2 |
| Alternative Name: | LAMP2 (LAMP2 Products) |
| Background: | Background: Implicated in tumor cell metastasis. May function in protection of the lysosomal membrane from autodigestion, maintenance of the acidic environment of the lysosome, |

Target Details

adhesion when expressed on the cell surface (plasma membrane), and inter- and intracellular signal transduction. Protects cells from the toxic effects of methylating mutagens.

Aliases: CD107 antigen like family member B antibody, CD107 antigen-like family member B antibody, CD107b antibody, LAMP 2 antibody, LAMP 2C antibody, LAMP-2 antibody, LAMP2 antibody, LAMP2_HUMAN antibody, LAMPB antibody, LGP 96 antibody, LGP110 antibody, LGP96 antibody, Lysosomal associated membrane protein 2 antibody, Lysosome associated membrane glycoprotein 2 antibody, Lysosome associated membrane protein 2 antibody, Lysosome-associated membrane glycoprotein 2 antibody, Lysosome-associated membrane protein 2 antibody, MAC3 antibody

UniProt: [P13473](#)

Pathways: [Autophagy](#)

Application Details

Application Notes: Recommended dilution: WB:1:500-1:2000, IHC:1:20-1:200, IF:1:50-1:200,

Restrictions: For Research Use only

Handling

Format: Liquid

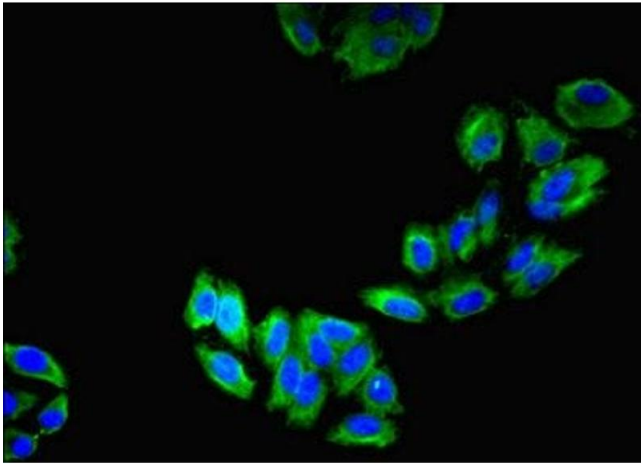
Buffer: Preservative: 0.03 % Proclin 300
Constituents: 50 % Glycerol, 0.01M PBS, PH 7.4

Preservative: ProClin

Precaution of Use: This product contains ProClin: a POISONOUS AND HAZARDOUS SUBSTANCE which should be handled by trained staff only.

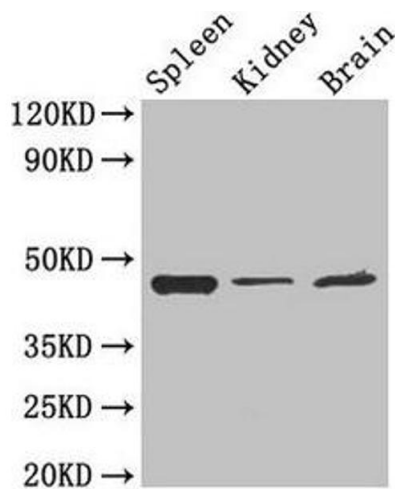
Storage: -20 °C,-80 °C

Storage Comment: Upon receipt, store at -20°C or -80°C. Avoid repeated freeze.



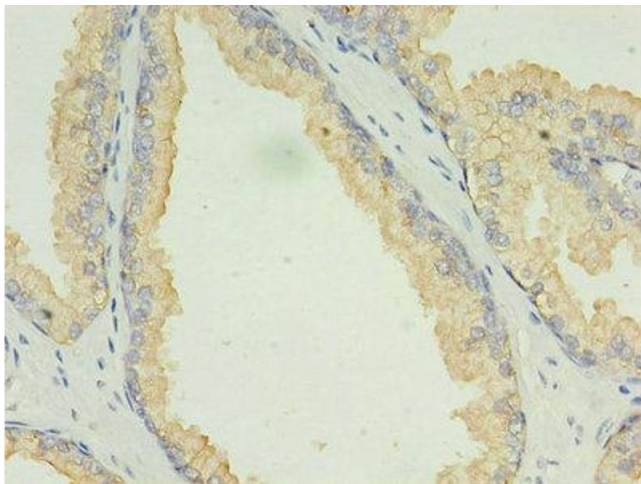
Immunofluorescence

Image 1. Immunofluorescent analysis of HepG2 cells using ABIN7158804 at dilution of 1:100 and Alexa Fluor 488-conjugated AffiniPure Goat Anti-Rabbit IgG(H+L)



Western Blotting

Image 2. Western Blot Positive WB detected in: Mouse spleen tissue, Mouse kidney tissue, Mouse brain tissue All lanes: LAMP2 antibody at 4 µg/mL Secondary Goat polyclonal to rabbit IgG at 1/50000 dilution Predicted band size: 45, 46 kDa Observed band size: 45 kDa



Immunohistochemistry

Image 3. Immunohistochemistry of paraffin-embedded human prostate cancer using ABIN7158804 at dilution of 1:100