



[Go to Product page](#)

Datasheet for ABIN7158808
anti-LAMP3 antibody (AA 28-224)

2 Images

Overview

Quantity:	100 µg
Target:	LAMP3
Binding Specificity:	AA 28-224
Reactivity:	Human
Host:	Rabbit
Clonality:	Polyclonal
Conjugate:	This LAMP3 antibody is un-conjugated
Application:	Western Blotting (WB), Immunohistochemistry (IHC), ELISA

Product Details

Immunogen:	Recombinant Human Lysosome-associated membrane glycoprotein 3 protein (28-224AA)
Isotype:	IgG
Cross-Reactivity:	Human
Purification:	>95%, Protein G purified

Target Details

Target:	LAMP3
Alternative Name:	LAMP3 (LAMP3 Products)
Background:	Background: May play a role in dendritic cell function and in adaptive immunity. Aliases: CD208 antibody, CD208 antigen antibody, DC LAMP antibody, DC lysosome associated

Target Details

membrane glycoprotein antibody, DC-lysosome-associated membrane glycoprotein antibody, DCLAMP antibody, LAMP antibody, LAMP 3 antibody, LAMP-3 antibody, Lamp3 antibody, LAMP3_HUMAN antibody, Lysosomal associated membrane protein 3 antibody, Lysosomal-associated membrane protein 3 antibody, Lysosome-associated membrane glycoprotein 3 antibody, Protein TSC403 antibody, TSC403 antibody

UniProt: [Q9UQV4](#)

Application Details

Application Notes: Recommended dilution: WB:1:500-1:5000, IHC:1:20-1:200,

Restrictions: For Research Use only

Handling

Format: Liquid

Buffer: Preservative: 0.03 % Proclin 300
Constituents: 50 % Glycerol, 0.01M PBS, pH 7.4

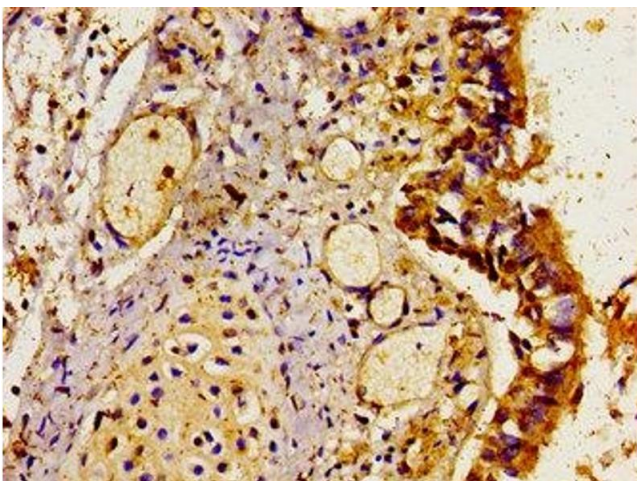
Preservative: ProClin

Precaution of Use: This product contains ProClin: a POISONOUS AND HAZARDOUS SUBSTANCE which should be handled by trained staff only.

Storage: -20 °C,-80 °C

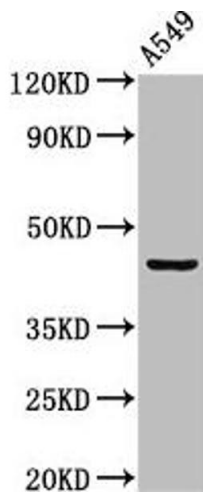
Storage Comment: Upon receipt, store at -20°C or -80°C. Avoid repeated freeze.

Images



Immunohistochemistry

Image 1. Immunohistochemistry of paraffin-embedded human lung tissue using ABIN7158808 at dilution of 1:100



Western Blotting

Image 2. Western Blot Positive WB detected in: A549 whole cell lysate All lanes: LAMP3 antibody at 2 $\mu\text{g}/\text{mL}$ Secondary Goat polyclonal to rabbit IgG at 1/50000 dilution Predicted band size: 45 kDa Observed band size: 45 kDa