



[Go to Product page](#)

Datasheet for ABIN7158821
anti-LYG2 antibody (AA 20-212)

2 Images

Overview

Quantity:	100 µg
Target:	LYG2
Binding Specificity:	AA 20-212
Reactivity:	Human
Host:	Rabbit
Clonality:	Polyclonal
Conjugate:	This LYG2 antibody is un-conjugated
Application:	ELISA, Immunohistochemistry (IHC)

Product Details

Immunogen:	Recombinant Human Lysozyme g-like protein 2 protein (20-212AA)
Isotype:	IgG
Cross-Reactivity:	Human
Purification:	>95%, Protein G purified

Target Details

Target:	LYG2
Alternative Name:	LYG2 (LYG2 Products)
Background:	Background: May act as a potent antibacterial protein that may play a role in the innate immunity.

Target Details

Aliases: LYG 2 antibody, Lyg2 antibody, LYG2_HUMAN antibody, LYGH antibody, Lysozyme G like 2 antibody, Lysozyme g like protein 2 antibody, Lysozyme g-like protein 2 antibody, Lysozyme like antibody, MGC119046 antibody, MGC119047 antibody, MGC119049 antibody

UniProt: [Q86SG7](#)

Application Details

Application Notes: Recommended dilution: IHC:1:20-1:200,

Restrictions: For Research Use only

Handling

Format: Liquid

Buffer: Preservative: 0.03 % Proclin 300
Constituents: 50 % Glycerol, 0.01M PBS, PH 7.4

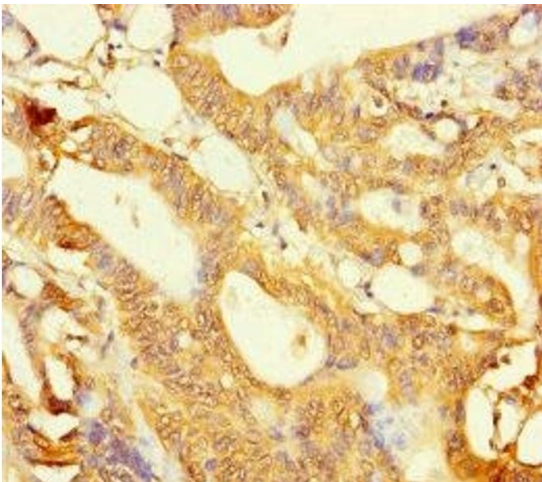
Preservative: ProClin

Precaution of Use: This product contains ProClin: a POISONOUS AND HAZARDOUS SUBSTANCE which should be handled by trained staff only.

Storage: -20 °C,-80 °C

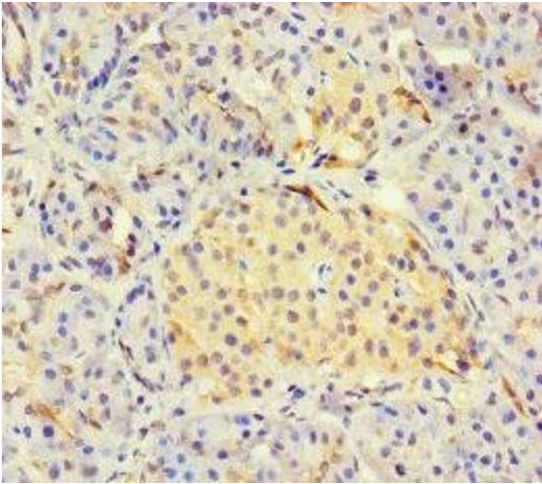
Storage Comment: Upon receipt, store at -20°C or -80°C. Avoid repeated freeze.

Images



Immunohistochemistry

Image 1. Immunohistochemistry of paraffin-embedded human colon cancer using ABIN7158821 at dilution of 1:100



Immunohistochemistry

Image 2. Immunohistochemistry of paraffin-embedded human pancreatic tissue using ABIN7158821 at dilution of 1:100