



[Go to Product page](#)

Datasheet for ABIN7158825

## anti-Lysozyme-Like 1 antibody (AA 1-194)

### 1 Image

#### Overview

Quantity:	100 µg
Target:	Lysozyme-Like 1 (LYZL1)
Binding Specificity:	AA 1-194
Reactivity:	Human
Host:	Rabbit
Clonality:	Polyclonal
Conjugate:	This Lysozyme-Like 1 antibody is un-conjugated
Application:	ELISA, Immunohistochemistry (IHC)

#### Product Details

Immunogen:	Recombinant Human Lysozyme-like protein 1 protein (1-194AA)
Isotype:	IgG
Cross-Reactivity:	Human
Purification:	>95%, Protein G purified

#### Target Details

Target:	Lysozyme-Like 1 (LYZL1)
Alternative Name:	LYZL1 ( <a href="#">LYZL1 Products</a> )
Background:	Background: Hydrolysis of (1->4)-beta-linkages between N-acetylmuramic acid and N-acetyl-D-glucosamine residues in a peptidoglycan and between N-acetyl-D-glucosamine residues in

## Target Details

---

chitodextrins.

Aliases: (1, 4-beta-N-acetylmuramidase), LYZ antibody, alfa-lacalbumin, C-type lysozyme antibody, bA534G20.1 antibody, EC 3.2.1.17 antibody, KAAG648 antibody, LYC2 antibody, Lysozyme like 1 antibody, Lysozyme-like protein 1 antibody, LYZL1 antibody, LYZL1\_HUMAN antibody, MGC33408 antibody, muramidase antibody, OTTHUMP00000019386 antibody, PRO1278 antibody, Sperm acrosome membrane associated protein 3 antibody

---

UniProt: [Q6UWQ5](#)

## Application Details

---

Application Notes: Recommended dilution: IHC:1:20-1:200,

Restrictions: For Research Use only

## Handling

---

Format: Liquid

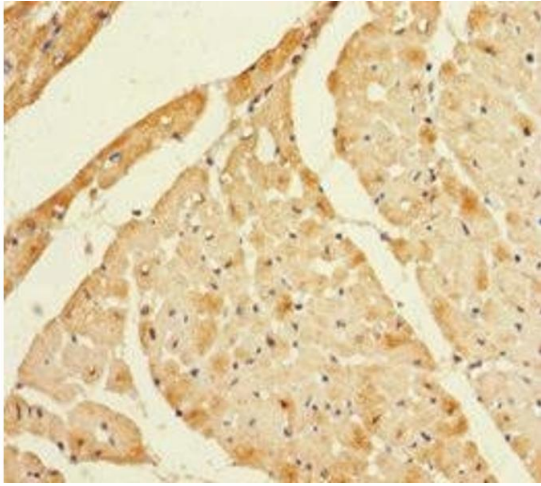
Buffer: Preservative: 0.03 % Proclin 300  
Constituents: 50 % Glycerol, 0.01M PBS, PH 7.4

Preservative: ProClin

Precaution of Use: This product contains ProClin: a POISONOUS AND HAZARDOUS SUBSTANCE which should be handled by trained staff only.

Storage: -20 °C,-80 °C

Storage Comment: Upon receipt, store at -20°C or -80°C. Avoid repeated freeze.



### Immunohistochemistry

**Image 1.** Immunohistochemistry of paraffin-embedded human heart tissue using ABIN7158825 at dilution of 1:100