

Datasheet for ABIN7158829
anti-Lysozyme-Like 2 antibody (AA 63-194)



[Go to Product page](#)

1 Image

Overview

Quantity:	100 µg
Target:	Lysozyme-Like 2 (LYZL2)
Binding Specificity:	AA 63-194
Reactivity:	Human
Host:	Rabbit
Clonality:	Polyclonal
Conjugate:	This Lysozyme-Like 2 antibody is un-conjugated
Application:	ELISA, Immunohistochemistry (IHC)

Product Details

Immunogen:	Recombinant Human Lysozyme-like protein 2 protein (63-194AA)
Isotype:	IgG
Cross-Reactivity:	Human
Purification:	>95%, Protein G purified

Target Details

Target:	Lysozyme-Like 2 (LYZL2)
Alternative Name:	LYZL2 (LYZL2 Products)
Background:	LYZL2Lysozyme-like protein 2 antibody, Lysozyme-2 antibody, EC 3.2.1.17 antibody
UniProt:	Q7Z4W2

Application Details

Application Notes: Recommended dilution: IHC:1:20-1:200,

Restrictions: For Research Use only

Handling

Format: Liquid

Buffer: Preservative: 0.03 % Proclin 300
Constituents: 50 % Glycerol, 0.01M PBS, PH 7.4

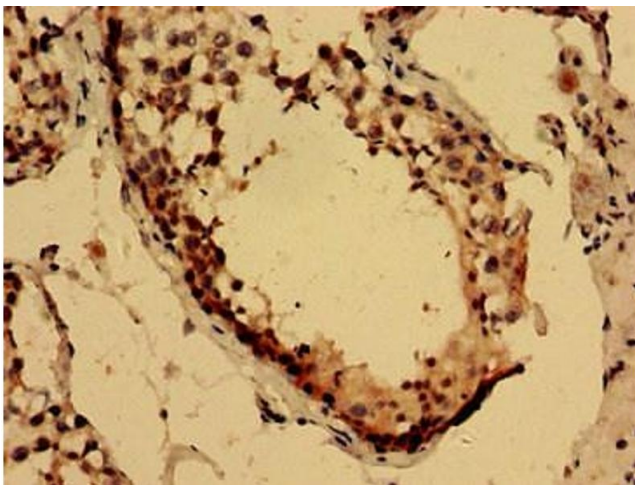
Preservative: ProClin

Precaution of Use: This product contains ProClin: a POISONOUS AND HAZARDOUS SUBSTANCE which should be handled by trained staff only.

Storage: -20 °C,-80 °C

Storage Comment: Upon receipt, store at -20°C or -80°C. Avoid repeated freeze.

Images



Immunohistochemistry

Image 1. Immunohistochemistry analysis of human testis tissue using ABIN7158829 at dilution of 1:100