

Datasheet for ABIN7158837
anti-LOXL2 antibody (AA 27-121)[Go to Product page](#)

2 Images

Overview

Quantity:	100 µg
Target:	LOXL2
Binding Specificity:	AA 27-121
Reactivity:	Human
Host:	Rabbit
Clonality:	Polyclonal
Application:	Western Blotting (WB), ELISA, Immunohistochemistry (IHC)

Product Details

Immunogen:	Recombinant Human Lysyl oxidase homolog 2 protein (27-121AA)
Isotype:	IgG
Cross-Reactivity:	Human, Mouse, Rat
Purification:	>95%, Protein G purified

Target Details

Target:	LOXL2
Alternative Name:	LOXL2 (LOXL2 Products)
Background:	Background: Mediates the post-translational oxidative deamination of lysine residues on target proteins leading to the formation of deaminated lysine (allysine). When secreted in extracellular matrix, promotes cross-linking of extracellular matrix proteins by mediating oxidative deamination of peptidyl lysine residues in precursors to fibrous collagen and elastin. Acts as a

Target Details

regulator of sprouting angiogenesis, probably via collagen IV scaffolding. When nuclear, acts as a transcription corepressor and specifically mediates deamination of trimethylated '\\Lys-4\\' of histone H3 (H3K4me3), a specific tag for epigenetic transcriptional activation. Involved in epithelial to mesenchymal transition (EMT) via interaction with SNAIL1 and participates in repression of E-cadherin, probably by mediating deamination of histone H3. Also involved in E-cadherin repression following hypoxia, a hallmark of epithelial to mesenchymal transition believed to amplify tumor aggressiveness, suggesting that it may play a role in tumor progression. Acts as a regulator of chondrocyte differentiation, probably by regulating expression of factors that control chondrocyte differentiation.

Aliases: LOR 2 antibody, LOR2 antibody, LOX L2 antibody, LOXL 2 antibody, LOXL2 antibody, LOXL2_HUMAN antibody, Lysyl oxidase homolog 2 antibody, Lysyl oxidase like 2 antibody, Lysyl oxidase like protein 2 antibody, Lysyl oxidase related 2 antibody, Lysyl oxidase related protein 2 antibody, Lysyl oxidase related protein WS9 14 antibody, Lysyl oxidase-like protein 2 antibody, Lysyl oxidase-related protein 2 antibody, Lysyl oxidase-related protein WS9-14 antibody, WS9 14 antibody

UniProt: [Q9Y4K0](#)

Pathways: [Chromatin Binding](#)

Application Details

Application Notes: Recommended dilution: WB:1:500-1:5000, IHC:1:20-1:200,

Restrictions: For Research Use only

Handling

Format: Liquid

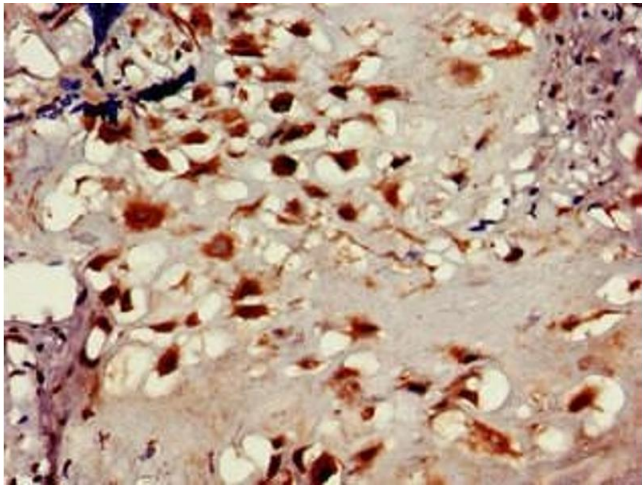
Buffer: Preservative: 0.03 % Proclin 300
Constituents: 50 % Glycerol, 0.01M PBS, pH 7.4

Preservative: ProClin

Precaution of Use: This product contains ProClin: a POISONOUS AND HAZARDOUS SUBSTANCE which should be handled by trained staff only.

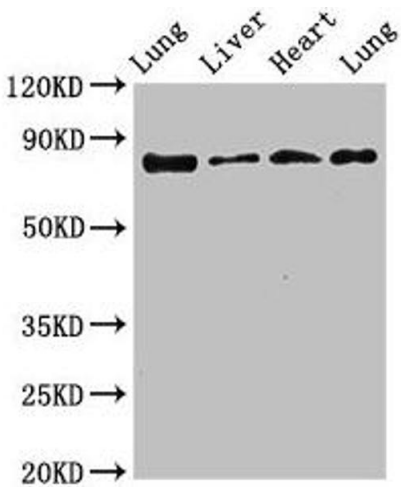
Storage: -20 °C,-80 °C

Storage Comment: Upon receipt, store at -20°C or -80°C. Avoid repeated freeze.



Immunohistochemistry

Image 1. Immunohistochemistry of paraffin-embedded human placenta tissue using ABIN7158837 at dilution of 1:100



Western Blotting

Image 2. Western Blot Positive WB detected in: Rat lung tissue, Rat liver tissue, Mouse heart tissue, Mouse lung tissue All lanes: LOXL2 antibody at 3.5 µg/mL Secondary Goat polyclonal to rabbit IgG at 1/50000 dilution Predicted band size: 87 kDa Observed band size: 87 kDa