



[Go to Product page](#)

Datasheet for ABIN7158870
anti-MAEA antibody (AA 299-356)

4 Images

Overview

| | |
|----------------------|---|
| Quantity: | 100 µg |
| Target: | MAEA |
| Binding Specificity: | AA 299-356 |
| Reactivity: | Human |
| Host: | Rabbit |
| Clonality: | Polyclonal |
| Conjugate: | This MAEA antibody is un-conjugated |
| Application: | Western Blotting (WB), ELISA, Immunohistochemistry (IHC), Immunofluorescence (IF) |

Product Details

| | |
|-------------------|--|
| Immunogen: | Recombinant Human Macrophage erythroblast attacher protein (299-356AA) |
| Isotype: | IgG |
| Cross-Reactivity: | Human |
| Purification: | >95%, Protein G purified |

Target Details

| | |
|-------------------|--|
| Target: | MAEA |
| Alternative Name: | MAEA (MAEA Products) |
| Background: | Background: Plays a role in erythroblast enucleation and in the development of the mature macrophages. Mediates the attachment of erythroid cell to mature macrophages, in correlation |

Target Details

with the presence of MAEA at cell surface of mature macrophages, This MAEA-mediated contact inhibits erythroid cells apoptosis. Participates to erythroblastic island formation, which is the functional unit of definitive erythropoiesis. Associates with F-actin to regulate actin distribution in erythroblasts and macrophages. May contribute to nuclear architecture and cells division events.

Aliases: 1110030D19Rik antibody, Cell proliferation inducing gene 5 protein antibody, Cell proliferation-inducing gene 5 protein antibody, EMLP antibody, EMP antibody, Erythroblast macrophage protein antibody, GID complex subunit 9 FYV10 homolog antibody, GID9 antibody, HLC 10 antibody, HLC-10 antibody, HLC10 antibody, Human lung cancer oncogene 10 protein antibody, Lung cancer related protein 10 antibody, Macrophage erythroblast attacher antibody, MAEA antibody, MAEA_HUMAN antibody, MGC93683 antibody, PIG5 antibody, Proliferation inducing gene 5 antibody

UniProt: [Q7L5Y9](#)

Application Details

Application Notes: Recommended dilution: WB:1:500-1:5000, IHC:1:500-1:1000, IF:1:50-1:200,

Restrictions: For Research Use only

Handling

Format: Liquid

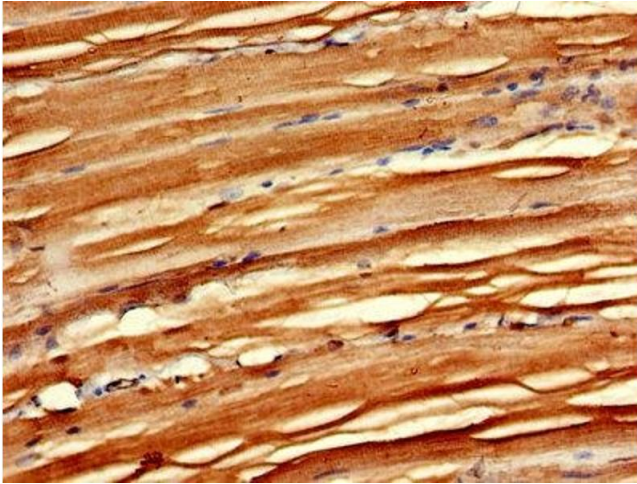
Buffer: Preservative: 0.03 % Proclin 300
Constituents: 50 % Glycerol, 0.01M PBS, pH 7.4

Preservative: ProClin

Precaution of Use: This product contains ProClin: a POISONOUS AND HAZARDOUS SUBSTANCE which should be handled by trained staff only.

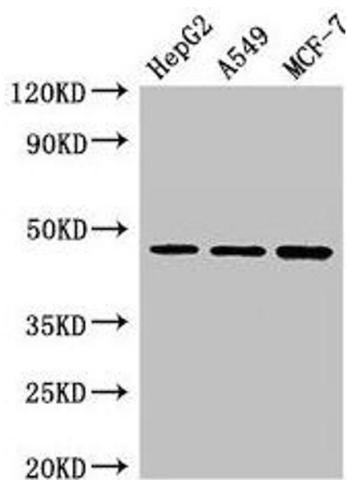
Storage: -20 °C,-80 °C

Storage Comment: Upon receipt, store at -20°C or -80°C. Avoid repeated freeze.



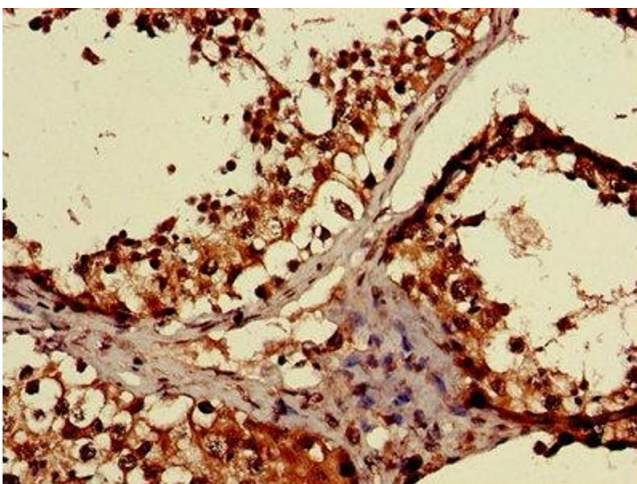
Immunohistochemistry

Image 1. IHC image of ABIN7158870 diluted at 1:600 and staining in paraffin-embedded human skeletal muscle tissue performed on a Leica Bond™ system. After dewaxing and hydration, antigen retrieval was mediated by high pressure in a citrate buffer (pH 6.0). Section was blocked with 10% normal goat serum 30min at RT. Then primary antibody (1% BSA) was incubated at 4°C overnight. The primary is detected by a biotinylated secondary antibody and visualized using an HRP conjugated SP system.



Western Blotting

Image 2. Western Blot Positive WB detected in: HepG2 whole cell lysate, A549 whole cell lysate, MCF-7 whole cell lysate All lanes: MAEA antibody at 3 µg/mL Secondary Goat polyclonal to rabbit IgG at 1/50000 dilution Predicted band size: 46, 41, 37, 27 kDa Observed band size: 46 kDa



Immunohistochemistry

Image 3. IHC image of ABIN7158870 diluted at 1:600 and staining in paraffin-embedded human testis tissue performed on a Leica Bond™ system. After dewaxing and hydration, antigen retrieval was mediated by high pressure in a citrate buffer (pH 6.0). Section was blocked with 10% normal goat serum 30min at RT. Then primary antibody (1% BSA) was incubated at 4°C overnight. The primary is detected by a biotinylated secondary antibody and visualized using an HRP conjugated SP system.

Please check the [product details page](#) for more images. Overall 4 images are available for ABIN7158870.