

Datasheet for ABIN7158891  
**anti-CAPG antibody (AA 1-348)**[Go to Product page](#)

## 1 Image

## Overview

Quantity:	100 µL
Target:	CAPG
Binding Specificity:	AA 1-348
Reactivity:	Human
Host:	Rabbit
Clonality:	Polyclonal
Conjugate:	This CAPG antibody is un-conjugated
Application:	Western Blotting (WB), ELISA

## Product Details

Immunogen:	Recombinant Human Macrophage-capping protein (1-348AA)
Isotype:	IgG
Cross-Reactivity:	Human, Rat
Purification:	Antigen Affinity Purified

## Target Details

Target:	CAPG
Alternative Name:	CAPG ( <a href="#">CAPG Products</a> )
Background:	Background: Calcium-sensitive protein which reversibly blocks the barbed ends of actin filaments but does not sever preformed actin filaments. May play an important role in

## Target Details

macrophage function. May play a role in regulating cytoplasmic and/or nuclear structures through potential interactions with actin. May bind DNA.

Aliases: Actin capping protein GCAP39 antibody, Actin regulatory protein CAP G antibody, Actin regulatory protein CAP-G antibody, AFCP antibody, Capg antibody, CAPG\_HUMAN antibody, Capping actin protein gelsolin like antibody, Capping protein (actin filament) gelsolin like antibody, Capping protein gelsolin like antibody, Epididymis secretory protein Li 66 antibody, gCap39 antibody, Gelsolin like capping protein antibody, HEL S 66 antibody, Macrophage capping protein antibody, Macrophage-capping protein antibody, mbh1 antibody, MCP antibody, Myc basic motif homolog 1 antibody

UniProt: [P40121](#)

Pathways: [Regulation of Actin Filament Polymerization](#)

## Application Details

Application Notes: Recommended dilution: WB:1:500-1:2000,

Restrictions: For Research Use only

## Handling

Format: Liquid

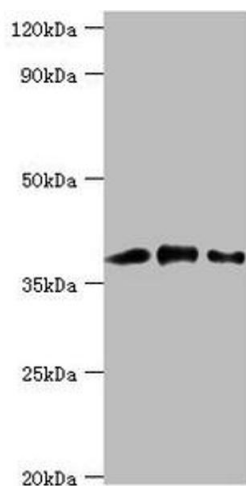
Buffer: PBS with 0.02 % sodium azide, 50 % glycerol, pH 7.3.

Preservative: Sodium azide

Precaution of Use: This product contains Sodium azide: a POISONOUS AND HAZARDOUS SUBSTANCE which should be handled by trained staff only.

Storage: -20 °C, -80 °C

Storage Comment: Upon receipt, store at -20°C or -80°C. Avoid repeated freeze.



#### Western Blotting

**Image 1.** Western blot All lanes: Macrophage-capping protein antibody at 1 µg/mL Lane 1: Hela whole cell lysate Lane 2: NIH/3T3 whole cell lysate Lane 3: Rat lung tissue Secondary Goat polyclonal to rabbit IgG at 1/10000 dilution Predicted band size: 39, 37 kDa Observed band size: 39 kDa