



[Go to Product page](#)

Datasheet for ABIN7158892
anti-MPEG1 antibody (AA 537-633)

1 Image

Overview

Quantity:	100 µg
Target:	MPEG1
Binding Specificity:	AA 537-633
Reactivity:	Human
Host:	Rabbit
Clonality:	Polyclonal
Conjugate:	This MPEG1 antibody is un-conjugated
Application:	ELISA, Immunofluorescence (IF)

Product Details

Immunogen:	Recombinant Human Macrophage-expressed gene 1 protein (537-633AA)
Isotype:	IgG
Cross-Reactivity:	Human
Purification:	>95%, Protein G purified

Target Details

Target:	MPEG1
Alternative Name:	MPEG1 (MPEG1 Products)
Background:	Macrophage expressed 1 antibody, Macrophage expressed gene 1 antibody, Macrophage gene 1 protein antibody, Macrophage specific gene 1 antibody, Macrophage-expressed gene 1

Target Details

protein antibody, Mpeg1 antibody, MPEG1_HUMAN antibody, Mpg-1 antibody, Mpg1 antibody, MPS1 antibody, MSG antibody

UniProt: [Q2M385](#)

Application Details

Application Notes: Recommended dilution: IF:1:50-1:200,

Restrictions: For Research Use only

Handling

Format: Liquid

Buffer: Preservative: 0.03 % Proclin 300
Constituents: 50 % Glycerol, 0.01M PBS, pH 7.4

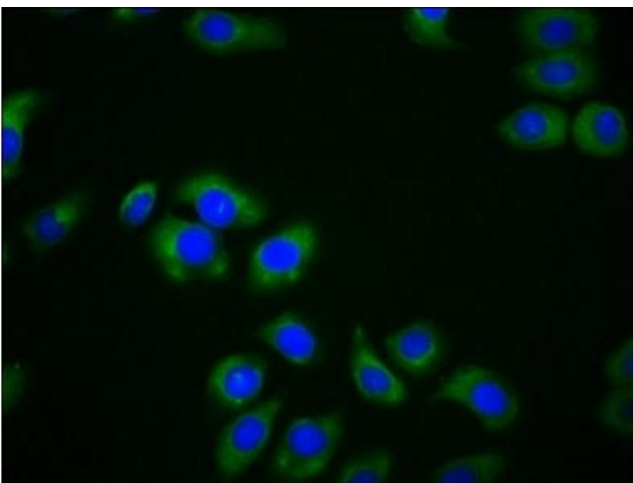
Preservative: ProClin

Precaution of Use: This product contains ProClin: a POISONOUS AND HAZARDOUS SUBSTANCE which should be handled by trained staff only.

Storage: -20 °C,-80 °C

Storage Comment: Upon receipt, store at -20°C or -80°C. Avoid repeated freeze.

Images



Immunofluorescence

Image 1. Immunofluorescence staining of A549 cells with ABIN7158892 at 1:166, counter-stained with DAPI. The cells were fixed in 4% formaldehyde, permeabilized using 0.2% Triton X-100 and blocked in 10% normal Goat Serum. The cells were then incubated with the antibody overnight at 4°C. The secondary antibody was Alexa Fluor 488-conjugated AffiniPure Goat Anti-Rabbit IgG(H+L).