

Datasheet for ABIN7158896
anti-MST1R antibody (AA 1175-1400)[Go to Product page](#)

1 Image

Overview

Quantity:	100 µL
Target:	MST1R
Binding Specificity:	AA 1175-1400
Reactivity:	Human
Host:	Rabbit
Clonality:	Polyclonal
Conjugate:	This MST1R antibody is un-conjugated
Application:	ELISA, Immunofluorescence (IF)

Product Details

Immunogen:	Recombinant Human Macrophage-stimulating protein receptor protein (1175-1400AA)
Isotype:	IgG
Cross-Reactivity:	Human
Purification:	Antigen Affinity Purified

Target Details

Target:	MST1R
Alternative Name:	MST1R (MST1R Products)
Background:	Background: Receptor tyrosine kinase that transduces signals from the extracellular matrix into the cytoplasm by binding to MST1 ligand. Regulates many physiological processes including

Target Details

cell survival, migration and differentiation. Ligand binding at the cell surface induces autophosphorylation of RON on its intracellular domain that provides docking sites for downstream signaling molecules. Following activation by ligand, interacts with the PI3-kinase subunit PIK3R1, PLCG1 or the adapter GAB1. Recruitment of these downstream effectors by RON leads to the activation of several signaling cascades including the RAS-ERK, PI3 kinase-AKT, or PLCgamma-PKC. RON signaling activates the wound healing response by promoting epithelial cell migration, proliferation as well as survival at the wound site. Plays also a role in the innate immune response by regulating the migration and phagocytic activity of macrophages. Alternatively, RON can also promote signals such as cell migration and proliferation in response to growth factors other than MST1 ligand.

Aliases: c met related tyrosine kinase antibody, CD136 antibody, CD136 antigen antibody, CDw136 antibody, Macrophage stimulating 1 receptor (c met related tyrosine kinase) antibody, Macrophage stimulating 1 receptor antibody, Macrophage stimulating protein receptor alpha chain antibody, MACROPHAGE STIMULATING PROTEIN RECEPTOR antibody, Macrophage stimulating protein receptor beta chain antibody, Macrophage-Stimulating 1 Receptor (MST1R) antibody, Macrophage-stimulating protein receptor beta chain antibody, MSP receptor antibody, Mst1r antibody, MST1R variant RON30 antibody, MST1R variant RON62 antibody, NPCA3 antibody, p185 RON antibody, p185-Ron antibody, Protein-tyrosine kinase 8 antibody, PTK 8 antibody, ptk8 antibody, PTK8 protein tyrosine kinase 8 antibody, Recepteur drigine nantais (RON) antibody, RON antibody, RON protein tyrosine kinase antibody, RON variant E2E3 antibody, RON_HUMAN antibody, Soluble RON variant 1 antibody, Soluble RON variant 2 antibody, Soluble RON variant 3 antibody, Soluble RON variant 4 antibody, Stem cell derived tyrosine kinase antibody

UniProt: [Q04912](#)

Pathways: [RTK Signaling](#)

Application Details

Application Notes: Recommended dilution: IF:1:50-1:200,

Restrictions: For Research Use only

Handling

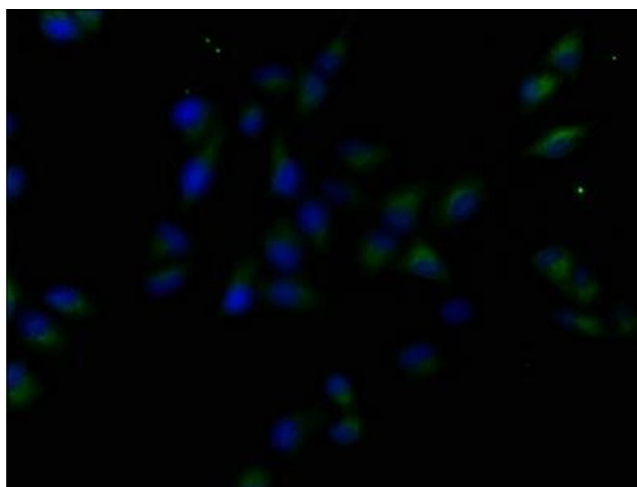
Format: Liquid

Buffer: Preservative: 0.03 % Proclin 300

Handling

	Constituents: 50 % Glycerol, 0.01M PBS, pH 7.4
Preservative:	ProClin
Precaution of Use:	This product contains ProClin: a POISONOUS AND HAZARDOUS SUBSTANCE which should be handled by trained staff only.
Storage:	-20 °C, -80 °C
Storage Comment:	Upon receipt, store at -20°C or -80°C. Avoid repeated freeze.

Images



Immunofluorescence

Image 1. Immunofluorescence staining of HeLa cells with ABIN7158896 at 1:50, counter-stained with DAPI. The cells were fixed in 4 % formaldehyde, permeabilized using 0.2 % Triton X-100 and blocked in 10 % normal Goat Serum. The cells were then incubated with the antibody overnight at 4 °C. The secondary antibody was Alexa Fluor 488-conjugated AffiniPure Goat Anti-Rabbit IgG(H+L).