

Datasheet for ABIN7158910
anti-MPP6 antibody (AA 220-420)



[Go to Product page](#)

3 Images

Overview

Quantity:	100 µL
Target:	MPP6
Binding Specificity:	AA 220-420
Reactivity:	Human
Host:	Rabbit
Clonality:	Polyclonal
Conjugate:	This MPP6 antibody is un-conjugated
Application:	Western Blotting (WB), ELISA, Immunohistochemistry (IHC)

Product Details

Immunogen:	Recombinant Human MAGUK p55 subfamily member 6 protein (220-420AA)
Isotype:	IgG
Cross-Reactivity:	Human, Mouse
Purification:	Antigen Affinity Purified

Target Details

Target:	MPP6
Alternative Name:	MPP6 (MPP6 Products)
Background:	Background: extracellular exosome, membrane, protein complex assembly Aliases: MAGUK p55 subfamily member 6 antibody, MAGUK p55 subfamily member 6 VELI

Target Details

associated MAGUK 1 antibody, MAGUK protein p55T antibody, Membrane protein palmitoylated 6 antibody, Mpp6 antibody, MPP6_HUMAN antibody, p55T antibody, Palmitoylated 6 MAGUK p55 subfamily member 6 antibody, PALS2 antibody, Protein associated with Lin7 2 antibody, VAM-1 antibody, VELI associated MAGUK 1 antibody, Veli-associated MAGUK 1 antibody

UniProt: [Q9NZW5](#)

Pathways: [Nucleotide Phosphorylation](#)

Application Details

Application Notes: Recommended dilution: WB:1:1000-1:5000, IHC:1:20-1:200,

Restrictions: For Research Use only

Handling

Format: Liquid

Buffer: PBS with 0.02 % sodium azide, 50 % glycerol, pH 7.3.

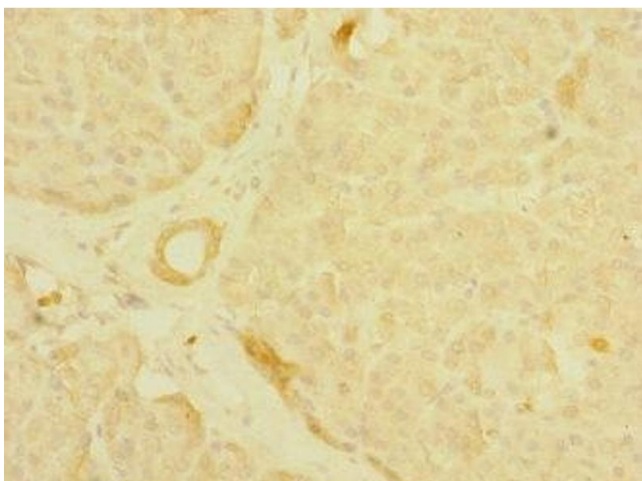
Preservative: Sodium azide

Precaution of Use: This product contains Sodium azide: a POISONOUS AND HAZARDOUS SUBSTANCE which should be handled by trained staff only.

Storage: -20 °C,-80 °C

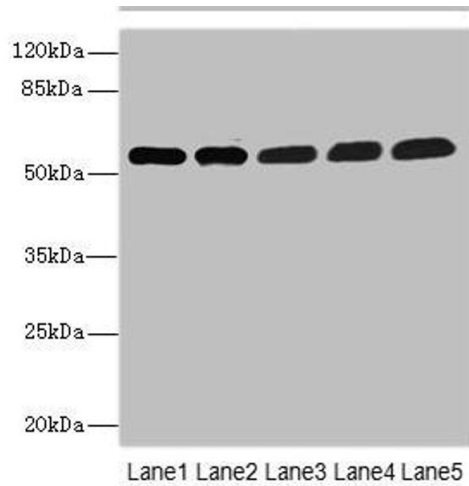
Storage Comment: Upon receipt, store at -20°C or -80°C. Avoid repeated freeze.

Images



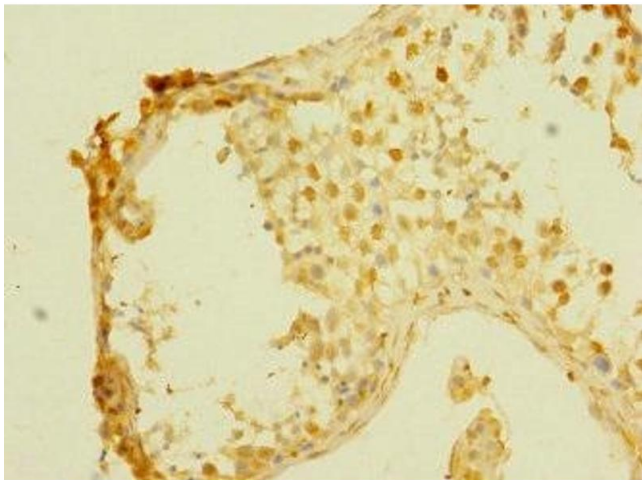
Immunohistochemistry

Image 1. Immunohistochemistry of paraffin-embedded human pancreatic tissue using ABIN7158910 at dilution of 1:100



Western Blotting

Image 2. Western blot All lanes: MPP6 antibody at 3.58 μ g/mL Lane 1: Mouse brain tissue Lane 2: Mouse kidney tissue Lane 3: HepG2 whole cell lysate Lane 4: Hela whole cell lysate Lane 5: A549 whole cell lysate Secondary Goat polyclonal to rabbit IgG at 1/10000 dilution Predicted band size: 61 kDa Observed band size: 61 kDa



Immunohistochemistry

Image 3. Immunohistochemistry of paraffin-embedded human testis tissue using ABIN7158910 at dilution of 1:100