

Datasheet for ABIN7158927
anti-MR1 antibody (AA 150-253)[Go to Product page](#)

4 Images

Overview

Quantity:	100 µg
Target:	MR1
Binding Specificity:	AA 150-253
Reactivity:	Human
Host:	Rabbit
Clonality:	Polyclonal
Conjugate:	This MR1 antibody is un-conjugated
Application:	Western Blotting (WB), ELISA, Immunohistochemistry (IHC), Immunofluorescence (IF)

Product Details

Immunogen:	Recombinant Human Major histocompatibility complex class I-related gene protein (150-253AA)
Isotype:	IgG
Cross-Reactivity:	Human
Purification:	>95%, Protein G purified

Target Details

Target:	MR1
Alternative Name:	MR1 (MR1 Products)
Background:	Background: Antigen-presenting molecule specialized in presenting microbial vitamin B

Target Details

metabolites. Involved in the development and expansion of a small population of T-cells expressing an invariant T-cell receptor alpha chain called mucosal-associated invariant T-cells (MAIT). MAIT lymphocytes are preferentially located in the gut lamina propria and therefore may be involved in monitoring commensal flora or serve as a distress signal. Expression and MAIT cell recognition seem to be ligand-dependent.

Aliases: Class I histocompatibility antigen like protein antibody, Class I histocompatibility antigen-like protein antibody, HLALS antibody, HMR1_HUMAN antibody, Major histocompatibility complex class I like sequence antibody, Major histocompatibility complex class I related antibody, Major histocompatibility complex class I related gene protein antibody, Major histocompatibility complex class I related isoform CRA a antibody, Major histocompatibility complex class I related isoform CRA c antibody, Major histocompatibility complex class I related isoform CRA d antibody, Major histocompatibility complex class I-related gene protein antibody, MHC class I like antigen MR 1 antibody, MHC class I like antigen MR1 antibody, MHC class I related gene protein antibody, MHC class I related protein 1 isoform B antibody, MHC class I related protein 1 isoform C antibody, MHC class I-related gene protein antibody, MR 1 antibody, Mr1 antibody, Mr1 protein antibody, MR1B antibody, MR1C antibody

UniProt: [Q95460](#)

Pathways: [Regulation of Leukocyte Mediated Immunity](#), [Positive Regulation of Immune Effector Process](#), [Production of Molecular Mediator of Immune Response](#), [Cancer Immune Checkpoints](#)

Application Details

Application Notes: Recommended dilution: WB:1:1000-1:5000, IHC:1:20-1:200, IF:1:50-1:200,

Restrictions: For Research Use only

Handling

Format: Liquid

Buffer: Preservative: 0.03 % Proclin 300
Constituents: 50 % Glycerol, 0.01M PBS, PH 7.4

Preservative: ProClin

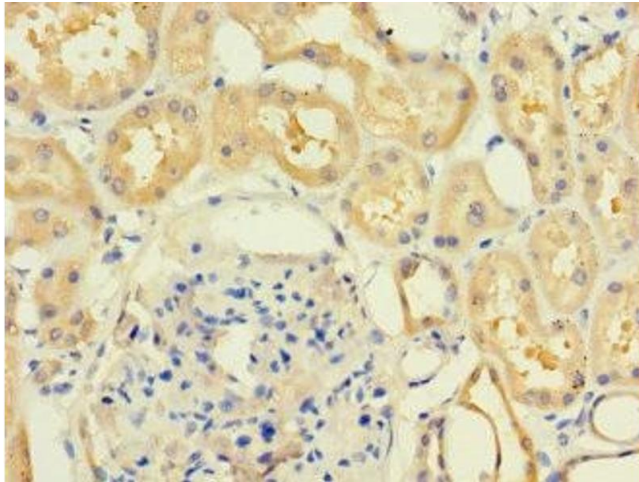
Precaution of Use: This product contains ProClin: a POISONOUS AND HAZARDOUS SUBSTANCE which should be handled by trained staff only.

Storage: -20 °C,-80 °C

Handling

Storage Comment: Upon receipt, store at -20°C or -80°C. Avoid repeated freeze.

Images



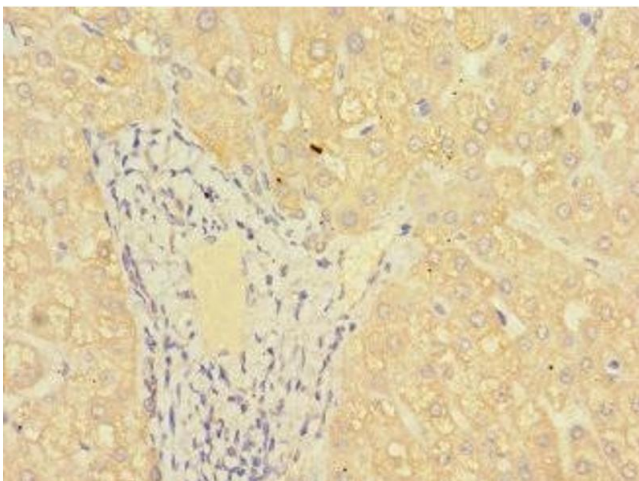
Immunohistochemistry

Image 1. Immunohistochemistry of paraffin-embedded human kidney tissue using ABIN7158927 at dilution of 1:100



Western Blotting

Image 2. Western blot All lanes: MR1 antibody at 6 µg/mL + K562 whole cell lysate Secondary Goat polyclonal to rabbit IgG at 1/10000 dilution Predicted band size: 40, 35, 29, 26 kDa Observed band size: 40 kDa



Immunohistochemistry

Image 3. Immunohistochemistry of paraffin-embedded human liver tissue using ABIN7158927 at dilution of 1:100

Please check the [product details page](#) for more images. Overall 4 images are available for ABIN7158927.