

Datasheet for ABIN7158940  
**anti-MDH1 antibody (AA 1-334)**

## 3 Images

[Go to Product page](#)

## Overview

Quantity:	100 µL
Target:	MDH1
Binding Specificity:	AA 1-334
Reactivity:	Human
Host:	Rabbit
Clonality:	Polyclonal
Conjugate:	This MDH1 antibody is un-conjugated
Application:	Western Blotting (WB), ELISA, Immunoprecipitation (IP), Immunohistochemistry (IHC)

## Product Details

Immunogen:	Recombinant Human Malate dehydrogenase, cytoplasmic protein (1-334AA)
Isotype:	IgG
Cross-Reactivity:	Human, Mouse
Purification:	Antigen Affinity Purified

## Target Details

Target:	MDH1
Alternative Name:	MDH1 ( <a href="#">MDH1 Products</a> )
Background:	Background: MDH1(Malate dehydrogenase, cytoplasmic) is also named as MDHA and belongs to the LDH/MDH superfamily and MDH type 2 family which catalyzes the reversible oxidation of

## Target Details

malate to oxaloacetate, utilizing the NAD/NADH cofactor system in the citric acid cycle. It can exist as a dimer and the dimeric MDH1 is the mitochondrial isoenzyme, whereas the tetrameric MDH2 is the glycosomal isoenzyme.

Aliases: cytoplasmic antibody, Cytosolic malate dehydrogenase antibody, Diiodophenylpyruvate reductase antibody, Malate dehydrogenase 1, NAD (soluble) antibody, Malate dehydrogenase antibody, Malate dehydrogenase cytoplasmic antibody, MDH s antibody, mdh1 antibody, MDHA antibody, MDHC\_HUMAN antibody, MDHs antibody, MGC:1375 antibody, MOR2 antibody, Soluble malate dehydrogenase antibody

UniProt: [P40925](#)

## Application Details

Application Notes: Recommended dilution: WB:1:1000-1:5000, IHC:1:20-1:200, IP:1:200-1:2000,

Restrictions: For Research Use only

## Handling

Format: Liquid

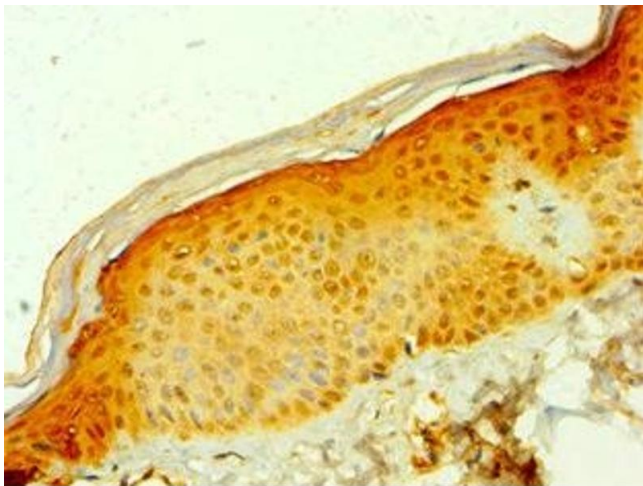
Buffer: PBS with 0.02 % sodium azide, 50 % glycerol, pH 7.3.

Preservative: Sodium azide

Precaution of Use: This product contains Sodium azide: a POISONOUS AND HAZARDOUS SUBSTANCE which should be handled by trained staff only.

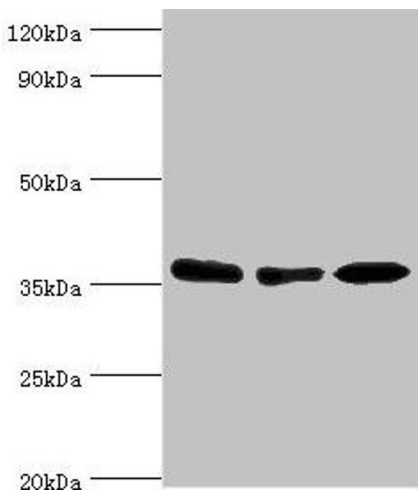
Storage: -20 °C, -80 °C

Storage Comment: Upon receipt, store at -20°C or -80°C. Avoid repeated freeze.



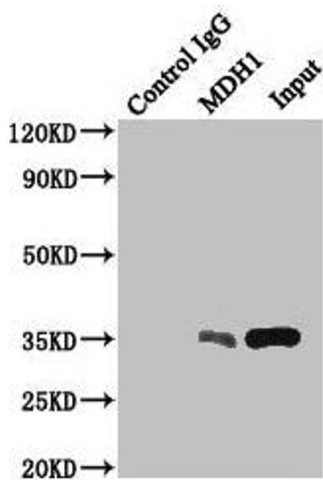
### Immunohistochemistry

**Image 1.** Immunohistochemistry of paraffin-embedded human skin tissue using ABIN7158940 at dilution of 1:100



### Western Blotting

**Image 2.** Western blot All lanes: MDH1 antibody at 4 µg/mL  
Lane 1: HepG2 whole cell lysate Lane 2: Hela whole cell lysate Lane 3: Mouse kidney tissue Secondary Goat polyclonal to rabbit IgG at 1/10000 dilution Predicted band size: 37, 28, 39 kDa Observed band size: 37 kDa



### Western Blotting

**Image 3.** Immunoprecipitating MDH1 in HepG2 whole cell lysate Lane 1: Rabbit control IgG instead of (1 µg) instead of ABIN7158940 in HepG2 whole cell lysate. For western blotting, a HRP-conjugated anti-rabbit IgG, specific to the non-reduced form of IgG was used as the Secondary antibody (1/50000) Lane 2: ABIN7158940 (4 µg) + HepG2 whole cell lysate (500 µg) Lane 3: HepG2 whole cell lysate (20 µg)