

Datasheet for ABIN7158941
anti-MDH1 antibody (AA 1-334)

3 Images

[Go to Product page](#)

Overview

Quantity:	100 µg
Target:	MDH1
Binding Specificity:	AA 1-334
Reactivity:	Human
Host:	Rabbit
Clonality:	Polyclonal
Conjugate:	This MDH1 antibody is un-conjugated
Application:	Western Blotting (WB), ELISA, Immunohistochemistry (IHC), Immunofluorescence (IF)

Product Details

Immunogen:	Recombinant Human Malate dehydrogenase, cytoplasmic protein (1-334AA)
Isotype:	IgG
Cross-Reactivity:	Human, Mouse
Purification:	>95%, Protein G purified

Target Details

Target:	MDH1
Alternative Name:	MDH1 (MDH1 Products)
Background:	Background: cytosol, extracellular exosome, extracellular space, mitochondrion, L-malate dehydrogenase activity, malic enzyme activity, gluconeogenesis, malate metabolic process,

Target Details

NADH metabolic process, oxaloacetate metabolic process

Aliases: cytoplasmic antibody, Cytosolic malate dehydrogenase antibody, Diiodophenylpyruvate reductase antibody, Malate dehydrogenase 1, NAD (soluble) antibody, Malate dehydrogenase antibody, Malate dehydrogenase cytoplasmic antibody, MDH s antibody, mdh1 antibody, MDHA antibody, MDHC_HUMAN antibody, MDHs antibody, MGC:1375 antibody, MOR2 antibody, Soluble malate dehydrogenase antibody

UniProt: [P40925](#)

Application Details

Application Notes: Recommended dilution: WB:1:500-1:5000, IHC:1:200-1:500, IF:1:50-1:200,

Restrictions: For Research Use only

Handling

Format: Liquid

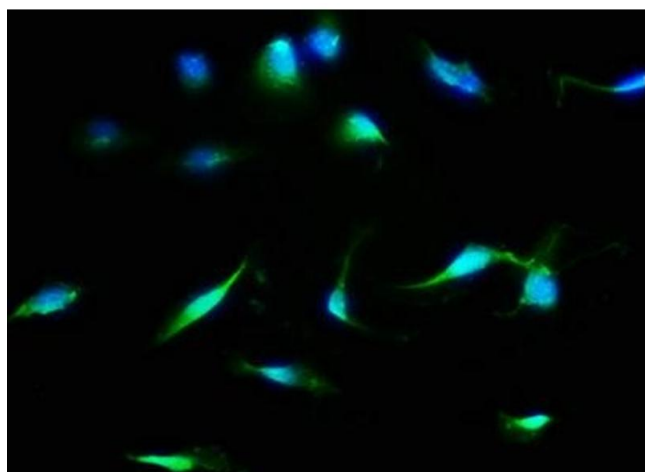
Buffer: Preservative: 0.03 % Proclin 300
Constituents: 50 % Glycerol, 0.01M PBS, pH 7.4

Preservative: ProClin

Precaution of Use: This product contains ProClin: a POISONOUS AND HAZARDOUS SUBSTANCE which should be handled by trained staff only.

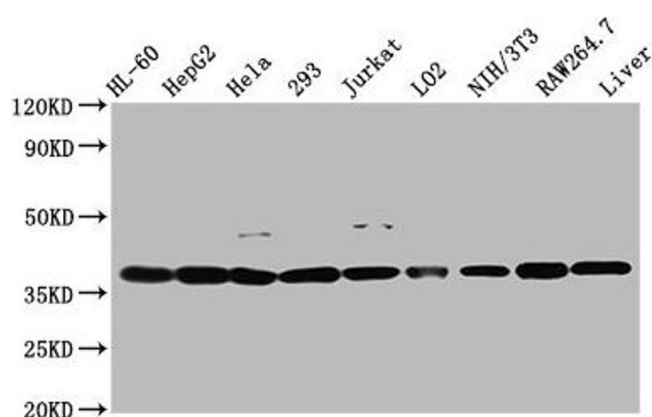
Storage: -20 °C, -80 °C

Storage Comment: Upon receipt, store at -20°C or -80°C. Avoid repeated freeze.



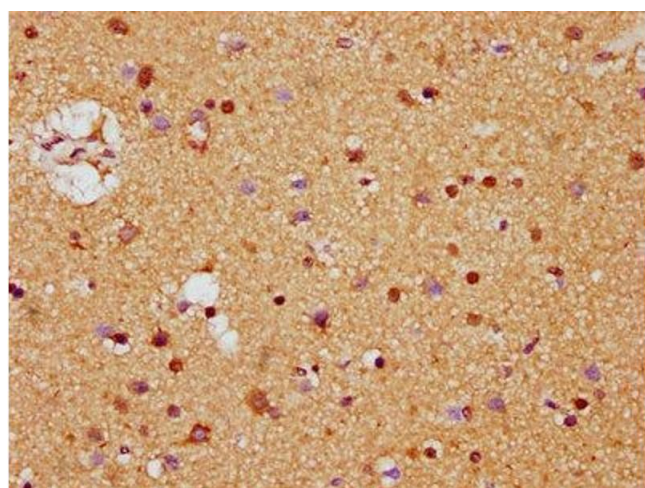
Immunofluorescence

Image 1. Immunofluorescence staining of U251 cells with ABIN7158941 at 1:133, counter-stained with DAPI. The cells were fixed in 4% formaldehyde, permeabilized using 0.2% Triton X-100 and blocked in 10% normal Goat Serum. The cells were then incubated with the antibody overnight at 4°C. The secondary antibody was Alexa Fluor 488-conjugated AffiniPure Goat Anti-Rabbit IgG(H+L).



Western Blotting

Image 2. Western Blot Positive WB detected in: HL60 whole cell lysate, HepG2 whole cell lysate, HeLa whole cell lysate, 293 whole cell lysate, Jurkat whole cell lysate, LO2 whole cell lysate, NIH/3T3 whole cell lysate, RAW264.7 whole cell lysate, Mouse liver tissue All lanes: MDH1 antibody at 2.6 µg/mL Secondary Goat polyclonal to rabbit IgG at 1/50000 dilution Predicted band size: 37, 28, 39 kDa Observed band size: 37 kDa



Immunohistochemistry

Image 3. IHC image of ABIN7158941 diluted at 1:400 and staining in paraffin-embedded human brain tissue performed on a Leica Bond™ system. After dewaxing and hydration, antigen retrieval was mediated by high pressure in a citrate buffer (pH 6.0). Section was blocked with 10% normal goat serum 30min at RT. Then primary antibody (1% BSA) was incubated at 4°C overnight. The primary is detected by a biotinylated secondary antibody and visualized using an HRP conjugated SP system.