



[Go to Product page](#)

Datasheet for ABIN7158947  
**anti-GSTZ1 antibody (AA 1-216)**

2 Images

Overview

Quantity:	100 µL
Target:	GSTZ1
Binding Specificity:	AA 1-216
Reactivity:	Human
Host:	Rabbit
Clonality:	Polyclonal
Application:	Western Blotting (WB), ELISA, Immunohistochemistry (IHC)

Product Details

Immunogen:	Recombinant Human Maleylacetoacetate isomerase protein (1-216AA)
Isotype:	IgG
Cross-Reactivity:	Human, Mouse
Purification:	Antigen Affinity Purified

Target Details

Target:	GSTZ1
Alternative Name:	GSTZ1 ( <a href="#">GSTZ1 Products</a> )
Background:	Background: Bifunctional enzyme showing minimal glutathione-conjugating activity with ethacrynic acid and 7-chloro-4-nitrobenz-2-oxa-1,3-diazole and maleylacetoacetate isomerase activity. Has also low glutathione peroxidase activity with T-butyl and cumene hydroperoxides. Is able to catalyze the glutathione dependent oxygenation of dichloroacetic acid to glyoxylic

## Target Details

acid.

Aliases: EC 2.5.1.18 antibody, EC 5.2.1.2 antibody, Glutathione S transferase zeta 1 antibody, Glutathione S-transferase zeta 1 antibody, Gstz1 antibody, GSTZ1-1 antibody, MAAI antibody, MAAI\_HUMAN antibody, Maleylacetoacetate isomerase antibody

UniProt: [O43708](#)

## Application Details

Application Notes: Recommended dilution: WB:1:1000-1:5000, IHC:1:20-1:200,

Restrictions: For Research Use only

## Handling

Format: Liquid

Buffer: PBS with 0.02 % sodium azide, 50 % glycerol, pH 7.3.

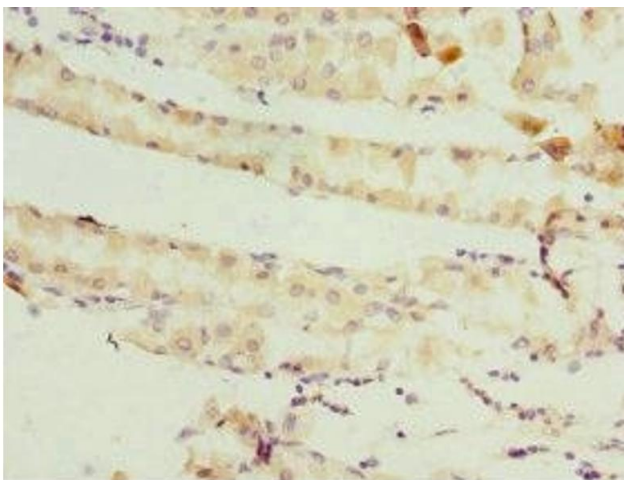
Preservative: Sodium azide

Precaution of Use: This product contains Sodium azide: a POISONOUS AND HAZARDOUS SUBSTANCE which should be handled by trained staff only.

Storage: -20 °C,-80 °C

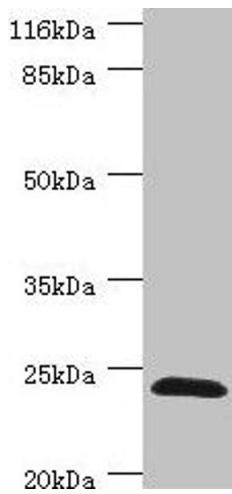
Storage Comment: Upon receipt, store at -20°C or -80°C. Avoid repeated freeze.

## Images



### Immunohistochemistry

**Image 1.** Immunohistochemistry of paraffin-embedded human gastric cancer using ABIN7158947 at dilution of 1:100



### Western Blotting

**Image 2.** Western blot All lanes: GSTZ1 antibody at 0.41  $\mu$ g/mL + Mouse liver tissue Secondary Goat polyclonal to rabbit IgG at 1/10000 dilution Predicted band size: 25, 18, 20 kDa Observed band size: 25 kDa