

Datasheet for ABIN7158970
anti-MASP1 antibody (AA 20-699)[Go to Product page](#)

1 Image

Overview

Quantity:	100 µg
Target:	MASP1
Binding Specificity:	AA 20-699
Reactivity:	Human
Host:	Rabbit
Clonality:	Polyclonal
Conjugate:	This MASP1 antibody is un-conjugated
Application:	Western Blotting (WB), ELISA

Product Details

Immunogen:	Recombinant Human Mannan-binding lectin serine protease 1 protein (20-699AA)
Isotype:	IgG
Cross-Reactivity:	Human
Purification:	>95%, Protein G purified

Target Details

Target:	MASP1
Alternative Name:	MASP1 (MASP1 Products)
Background:	Background: Functions in the lectin pathway of complement, which performs a key role in innate immunity by recognizing pathogens through patterns of sugar moieties and neutralizing

Target Details

them. The lectin pathway is triggered upon binding of mannan-binding lectin (MBL) and ficolins to sugar moieties which leads to activation of the associated proteases MASP1 and MASP2.

Functions as an endopeptidase and may activate MASP2 or C2 or directly activate C3 the key component of complement reaction. Isoform 2 may have an inhibitory effect on the activation of the lectin pathway of complement or may cleave IGFBP5.

Aliases: MASP1 antibody, CRARF antibody, CRARF1 antibody, PRSS5Mannan-binding lectin serine protease 1 antibody, EC 3.4.21.- antibody, Complement factor MASP-3 antibody, Complement-activating component of Ra-reactive factor antibody, Mannose-binding lectin-associated serine protease 1 antibody, MASP-1 antibody, Mannose-binding protein-associated serine protease antibody, Ra-reactive factor serine protease p100 antibody, RaRF antibody, Serine protease 5) [Cleaved into: Mannan-binding lectin serine protease 1 heavy chain, Mannan-binding lectin serine protease 1 light chain] antibody

UniProt: [P48740](#)

Pathways: [Complement System](#)

Application Details

Application Notes: Recommended dilution: WB:1:500-1:2000,

Restrictions: For Research Use only

Handling

Format: Liquid

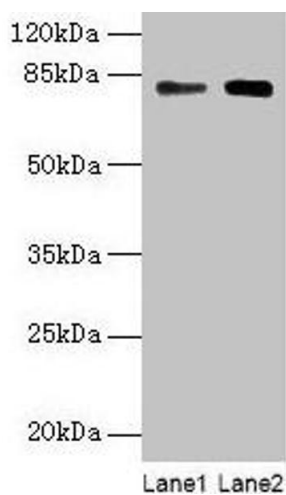
Buffer: Preservative: 0.03 % Proclin 300
Constituents: 50 % Glycerol, 0.01M PBS, PH 7.4

Preservative: ProClin

Precaution of Use: This product contains ProClin: a POISONOUS AND HAZARDOUS SUBSTANCE which should be handled by trained staff only.

Storage: -20 °C,-80 °C

Storage Comment: Upon receipt, store at -20°C or -80°C. Avoid repeated freeze.



Western Blotting

Image 1. Western blot All lanes: MASP1 antibody at 6 μ g/mL Lane 1: Hela whole cell lysate Lane 2: U251 whole cell lysate Secondary Goat polyclonal to rabbit IgG at 1/10000 dilution Predicted band size: 80, 82, 44, 69 kDa Observed band size: 80 kDa