



[Go to Product page](#)

Datasheet for ABIN7158982
anti-MPI antibody (AA 1-423)

3 Images

Overview

Quantity:	100 µL
Target:	MPI
Binding Specificity:	AA 1-423
Reactivity:	Human
Host:	Rabbit
Clonality:	Polyclonal
Conjugate:	This MPI antibody is un-conjugated
Application:	Western Blotting (WB), ELISA, Immunohistochemistry (IHC)

Product Details

Immunogen:	Recombinant Human Mannose-6-phosphate isomerase protein (1-423AA)
Isotype:	IgG
Cross-Reactivity:	Human, Mouse
Purification:	Antigen Affinity Purified

Target Details

Target:	MPI
Alternative Name:	MPI (MPI Products)
Background:	Background: Involved in the synthesis of the GDP-mannose and dolichol-phosphate-mannose required for a number of critical mannosyl transfer reactions.

Target Details

Aliases: ody, CDG1B antibody, FLJ39201 antibody, Mannose 6 phosphate isomerase antibody, Mannose-6-phosphate isomerase antibody, MANNOSEPHOSPHATE ISOMERASE antibody, MGC94106 antibody, MPI antibody, MPI_HUMAN antibody, Phosphohexomutase antibody, phosphomannose isomerase 1 antibody, Phosphomannose isomerase antibody, PMI antibody

UniProt: [P34949](#)

Application Details

Application Notes: Recommended dilution: WB:1:1000-1:5000, IHC:1:20-1:200,

Restrictions: For Research Use only

Handling

Format: Liquid

Buffer: PBS with 0.02 % sodium azide, 50 % glycerol, pH 7.3.

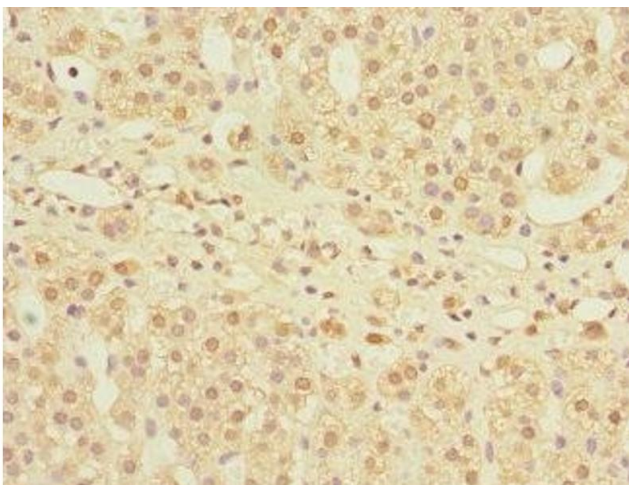
Preservative: Sodium azide

Precaution of Use: This product contains Sodium azide: a POISONOUS AND HAZARDOUS SUBSTANCE which should be handled by trained staff only.

Storage: -20 °C,-80 °C

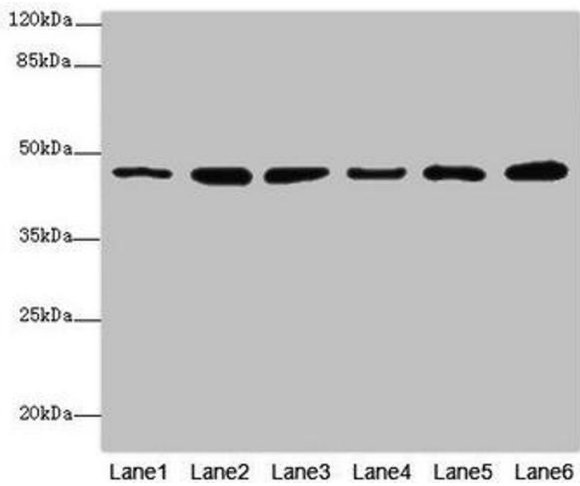
Storage Comment: Upon receipt, store at -20°C or -80°C. Avoid repeated freeze.

Images



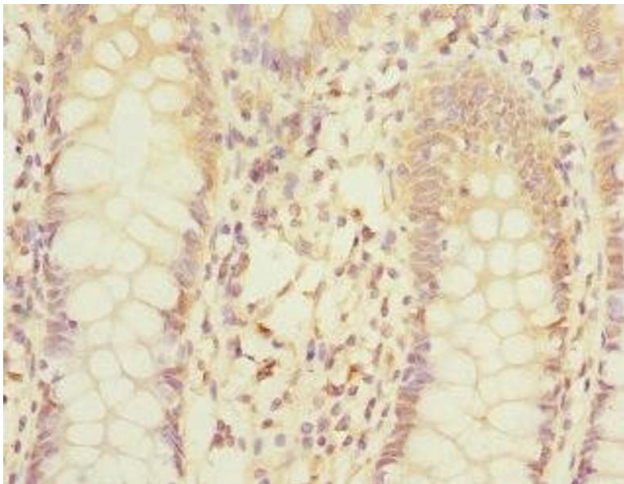
Immunohistochemistry

Image 1. Immunohistochemistry of paraffin-embedded human adrenal gland tissue using ABIN7158982 at dilution of 1:100



Western Blotting

Image 2. Western blot All lanes: MPI antibody at 5.12 $\mu\text{g}/\text{mL}$
Lane 1: Mouse heart tissue Lane 2: Mouse kidney tissue
Lane 3: Mouse brain tissue Lane 4: HepG2 whole cell lysate
Lane 5: 293T whole cell lysate Lane 6: A549 whole cell lysate
Secondary Goat polyclonal to rabbit IgG at 1/10000 dilution
Predicted band size: 47, 40 kDa Observed band size: 47 kDa



Immunohistochemistry

Image 3. Immunohistochemistry of paraffin-embedded human colon cancer using ABIN7158982 at dilution of 1:100