



[Go to Product page](#)

Datasheet for ABIN7159004  
**anti-MAP3K7CL antibody (AA 1-142)**

2 Images

Overview

Quantity:	100 µg
Target:	MAP3K7CL
Binding Specificity:	AA 1-142
Reactivity:	Human
Host:	Rabbit
Clonality:	Polyclonal
Conjugate:	This MAP3K7CL antibody is un-conjugated
Application:	ELISA, Immunohistochemistry (IHC), Immunofluorescence (IF)

Product Details

Immunogen:	Recombinant Human MAP3K7 C-terminal-like protein (1-142AA)
Isotype:	IgG
Cross-Reactivity:	Human
Purification:	>95%, Protein G purified

Target Details

Target:	MAP3K7CL
Alternative Name:	MAP3K7CL ( <a href="#">MAP3K7CL Products</a> )
Background:	MAP3K7CL antibody, C21orf7 antibody, TAK1LMAP3K7 C-terminal-like protein antibody, TAK1-like protein antibody

## Target Details

---

UniProt: [P57077](#)

## Application Details

---

Application Notes: Recommended dilution: IHC:1:20-1:200, IF:1:50-1:200,

Restrictions: For Research Use only

## Handling

---

Format: Liquid

Buffer: Preservative: 0.03 % Proclin 300  
Constituents: 50 % Glycerol, 0.01M PBS, PH 7.4

Preservative: ProClin

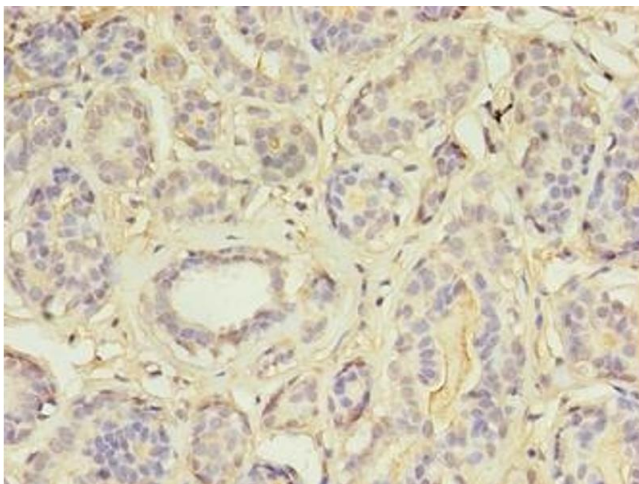
Precaution of Use: This product contains ProClin: a POISONOUS AND HAZARDOUS SUBSTANCE which should be handled by trained staff only.

Storage: -20 °C,-80 °C

Storage Comment: Upon receipt, store at -20°C or -80°C. Avoid repeated freeze.

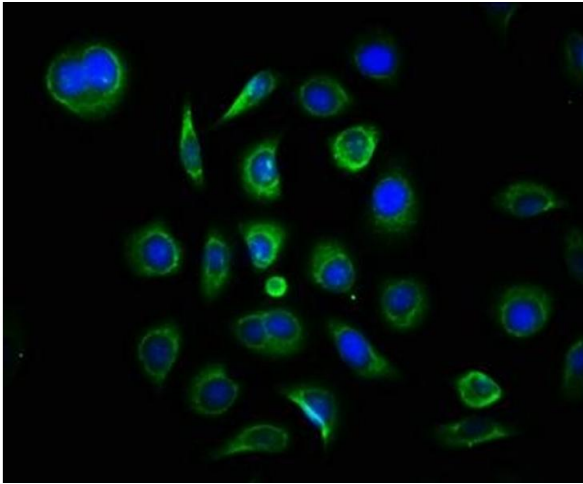
## Images

---



### Immunohistochemistry

**Image 1.** Immunohistochemistry of paraffin-embedded human breast cancer using ABIN7159004 at dilution of 1:100



### Immunofluorescence

**Image 2.** Immunofluorescence staining of A549 cells with ABIN7159004 at 1:133, counter-stained with DAPI. The cells were fixed in 4 % formaldehyde, permeabilized using 0.2 % Triton X-100 and blocked in 10 % normal Goat Serum. The cells were then incubated with the antibody overnight at 4 °C. The secondary antibody was Alexa Fluor 488-conjugated AffiniPure Goat Anti-Rabbit IgG(H+L).