

Datasheet for ABIN7159013
anti-MRGPRX2 antibody (AA 286-330)[Go to Product page](#)

3 Images

Overview

Quantity:	100 µg
Target:	MRGPRX2
Binding Specificity:	AA 286-330
Reactivity:	Human
Host:	Rabbit
Clonality:	Polyclonal
Conjugate:	This MRGPRX2 antibody is un-conjugated
Application:	ELISA, Western Blotting (WB), Immunofluorescence (IF)

Product Details

Immunogen:	Recombinant Human Mas-related G-protein coupled receptor member X2 protein (286-330AA)
Isotype:	IgG
Cross-Reactivity:	Human, Mouse
Purification:	>95%, Protein G purified

Target Details

Target:	MRGPRX2
Alternative Name:	MRGPRX2 (MRGPRX2 Products)
Background:	Background: Mast cell-specific receptor for basic secretagogues, i.e. cationic amphiphilic drugs, as well as endo- or exogenous peptides, consisting of a basic head group and a hydrophobic

Target Details

core (PubMed:25517090). Recognizes and binds small molecules containing a cyclized tetrahydroisoquinoline (THIQ), such as non-steroidal neuromuscular blocking drugs (NMBDs), including tubocurarine and atracurium. In response to these compounds, mediates pseudo-allergic reactions characterized by histamine release, inflammation and airway contraction. Acts as a receptor for a number of other ligands, including peptides and alkaloids, such as cortistatin-14, proadrenomedullin N-terminal peptides PAMP-12 and, at lower extent, PAMP-20, antibacterial protein LL-37, PMX-53 peptide, beta-defensins, and complanadine A.

Aliases: G protein coupled receptor MRGX 2 antibody, G protein coupled receptor MRGX2 antibody, Mas related G protein coupled receptor member X2 antibody, Mas related gene MRGX 2 antibody, Mas related gene MRGX2 antibody, MAS related GPR member X2 antibody, Mas-related G-protein coupled receptor member X antibody, Mas-related G-protein coupled receptor member X2 antibody, MRGPRX 2 antibody, MRGPRX2 antibody, MRGX 2 antibody, MRGX2 antibody, MRGX2_HUMAN antibody

UniProt: [Q96LB1](#)

Application Details

Application Notes: Recommended dilution: WB:1:1000-1:5000, IF:1:50-1:200,

Restrictions: For Research Use only

Handling

Format: Liquid

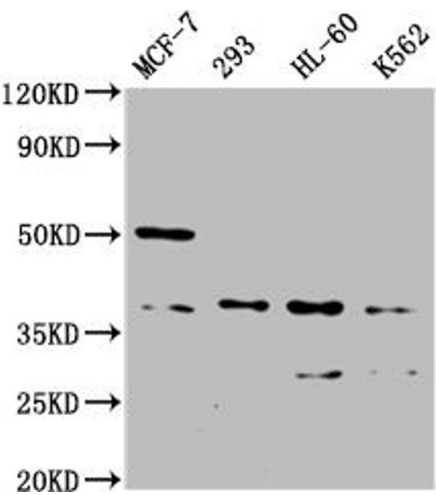
Buffer: Preservative: 0.03 % Proclin 300
Constituents: 50 % Glycerol, 0.01M PBS, PH 7.4

Preservative: ProClin

Precaution of Use: This product contains ProClin: a POISONOUS AND HAZARDOUS SUBSTANCE which should be handled by trained staff only.

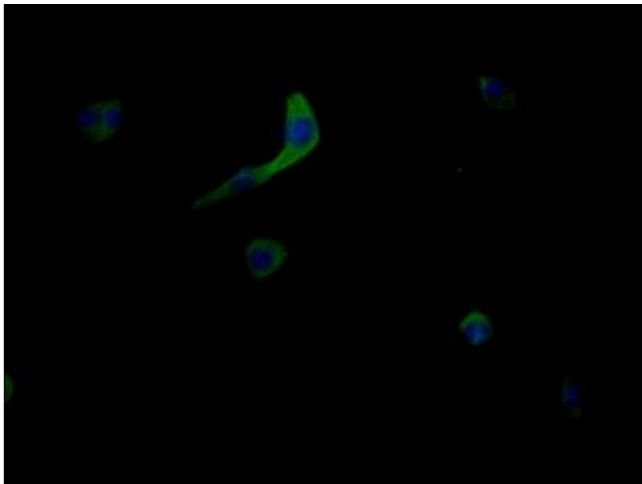
Storage: -20 °C,-80 °C

Storage Comment: Upon receipt, store at -20°C or -80°C. Avoid repeated freeze.



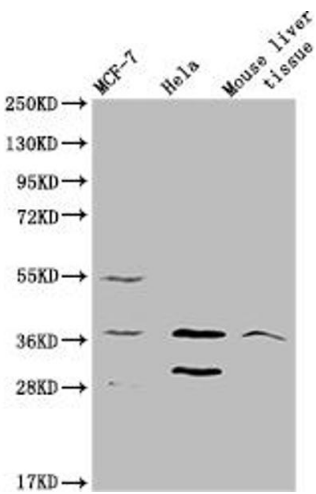
Western Blotting

Image 1. Western Blot Positive WB detected in: MCF-7 whole cell lysate, 293 whole cell lysate, HL60 whole cell lysate, K562 whole cell lysate All lanes: MRGPRX2 antibody at 1:2000 Secondary Goat polyclonal to rabbit IgG at 1/50000 dilution Predicted band size: 38 kDa Observed band size: 38 kDa



Immunofluorescence

Image 2. Immunofluorescent analysis of MCF-7 cells using ABIN7159013 at dilution of 1:100 and Alexa Fluor 488-conjugated AffiniPure Goat Anti-Rabbit IgG(H+L)



Western Blotting

Image 3. Western blot All lanes: MRGPRX2 antibody at 5 μ g/mL Lane 1: 293T whole cell lysate Lane 2: Mouse liver tissue Secondary Goat polyclonal to rabbit IgG at 1/10000 dilution Predicted band size: 38 kDa Observed band size: 38 kDa