



[Go to Product page](#)

Datasheet for ABIN7159021
anti-MAS1L antibody (AA 318-378)

4 Images

Overview

Quantity:	100 µg
Target:	MAS1L
Binding Specificity:	AA 318-378
Reactivity:	Human
Host:	Rabbit
Clonality:	Polyclonal
Conjugate:	This MAS1L antibody is un-conjugated
Application:	ELISA, Western Blotting (WB), Immunofluorescence (IF), Immunohistochemistry (IHC)

Product Details

Immunogen:	Recombinant Human Mas-related G-protein coupled receptor MRG protein (318-378AA)
Isotype:	IgG
Cross-Reactivity:	Human
Purification:	>95%, Protein G purified

Target Details

Target:	MAS1L
Alternative Name:	MAS1L (MAS1L Products)
Background:	Background: cytoplasm, integral component of membrane, integral component of plasma membrane, nucleoplasm, plasma membrane, G-protein coupled receptor activity, G-protein

Target Details

coupled receptor signaling pathway

Aliases: dJ994E9.2 antibody, MAS L antibody, MAS R antibody, Mas related G protein coupled MRG antibody, Mas related G protein coupled receptor antibody, MAS-R antibody, Mas-related G-protein coupled receptor MRG antibody, MAS1 oncogene like antibody, MAS1 proto-oncogene like, G protein-coupled receptor antibody, MAS1-like antibody, MAS1L antibody, MAS1L_HUMAN antibody, MGC119987 antibody, MRG antibody

UniProt: [P35410](#)

Application Details

Application Notes: Recommended dilution: WB:1:500-1:2000, IHC:1:20-1:200, IF:1:50-1:200,

Restrictions: For Research Use only

Handling

Format: Liquid

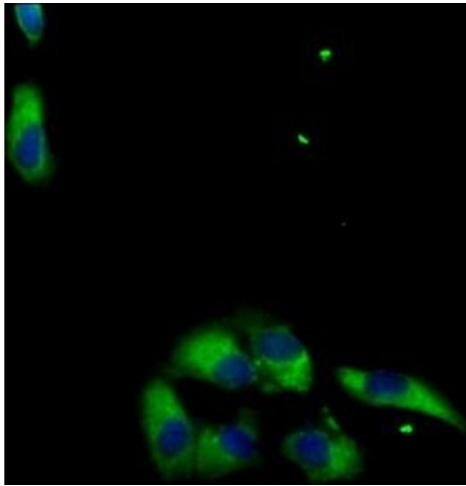
Buffer: Preservative: 0.03 % Proclin 300
Constituents: 50 % Glycerol, 0.01M PBS, PH 7.4

Preservative: ProClin

Precaution of Use: This product contains ProClin: a POISONOUS AND HAZARDOUS SUBSTANCE which should be handled by trained staff only.

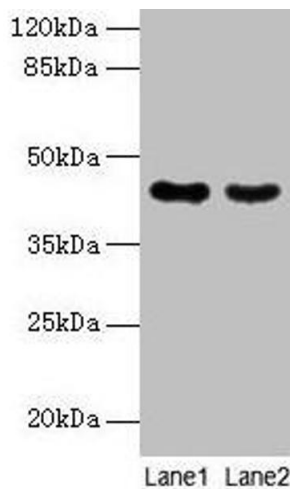
Storage: -20 °C,-80 °C

Storage Comment: Upon receipt, store at -20°C or -80°C. Avoid repeated freeze.



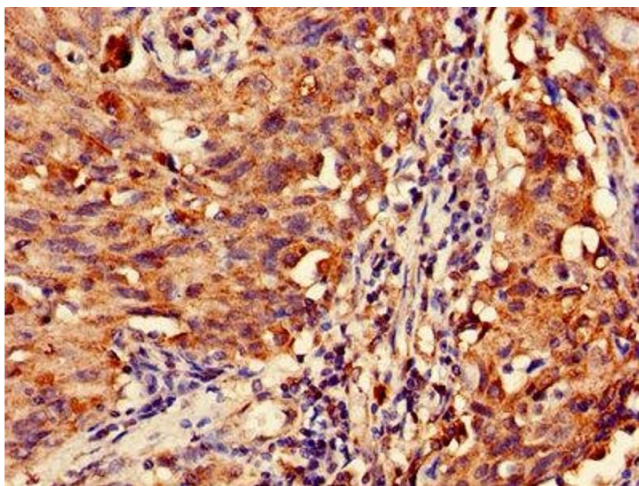
Immunofluorescence

Image 1. Immunofluorescent analysis of HepG2 cells using ABIN7159021 at dilution of 1:100 and Alexa Fluor 488-conjugated AffiniPure Goat Anti-Rabbit IgG(H+L)



Western Blotting

Image 2. Western blot All lanes: MAS1L antibody at 2 μ g/mL Lane 1: Colo320 whole cell lysate Lane 2: HeLa whole cell lysate Secondary Goat polyclonal to rabbit IgG at 1/10000 dilution Predicted band size: 43 kDa Observed band size: 43 kDa



Immunohistochemistry

Image 3. Immunohistochemistry of paraffin-embedded human lung cancer using ABIN7159021 at dilution of 1:100

Please check the [product details page](#) for more images. Overall 4 images are available for ABIN7159021.