

Datasheet for ABIN7159033  
**anti-MAML1 antibody (AA 1-45)**



[Go to Product page](#)

2 Images

## Overview

Quantity:	100 µg
Target:	MAML1
Binding Specificity:	AA 1-45
Reactivity:	Human
Host:	Rabbit
Clonality:	Polyclonal
Conjugate:	This MAML1 antibody is un-conjugated
Application:	ELISA, Immunohistochemistry (IHC)

## Product Details

Immunogen:	Recombinant Human Mastermind-like protein 1 protein (1-45AA)
Isotype:	IgG
Cross-Reactivity:	Human
Purification:	>95%, Protein G purified

## Target Details

Target:	MAML1
Alternative Name:	MAML1 ( <a href="#">MAML1 Products</a> )
Background:	Background: Acts as a transcriptional coactivator for NOTCH proteins. Has been shown to amplify NOTCH-induced transcription of HES1. Enhances phosphorylation and proteolytic

## Target Details

---

turnover of the NOTCH intracellular domain in the nucleus through interaction with CDK8. Binds to CREBBP/CBP which promotes nucleosome acetylation at NOTCH enhancers and activates transcription. Induces phosphorylation and localization of CREBBP to nuclear foci. Plays a role in hematopoietic development by regulating NOTCH-mediated lymphoid cell fate decisions.

Aliases: Mam-1 antibody, Mam1 antibody, MAML 1 antibody, Maml1 antibody, MAML1\_HUMAN antibody, Mastermind like 1 antibody, Mastermind-like protein 1 antibody

---

UniProt: [Q92585](#)

---

Pathways: [Notch Signaling](#), [Regulation of Muscle Cell Differentiation](#), [Skeletal Muscle Fiber Development](#)

## Application Details

---

---

Application Notes: Recommended dilution: IHC:1:20-1:200,

---

Restrictions: For Research Use only

## Handling

---

---

Format: Liquid

---

Buffer: Preservative: 0.03 % Proclin 300  
Constituents: 50 % Glycerol, 0.01M PBS, PH 7.4

---

Preservative: ProClin

---

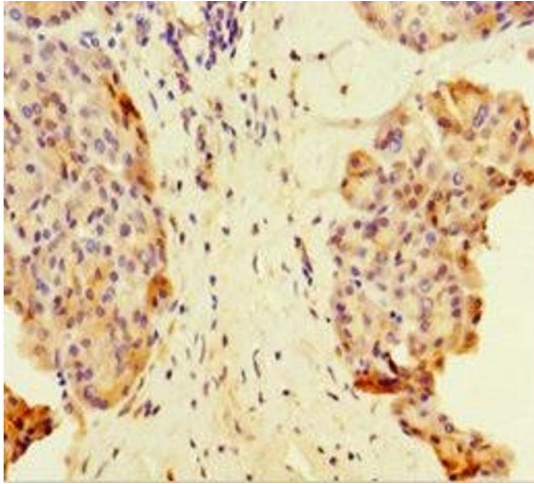
Precaution of Use: This product contains ProClin: a POISONOUS AND HAZARDOUS SUBSTANCE which should be handled by trained staff only.

---

Storage: -20 °C,-80 °C

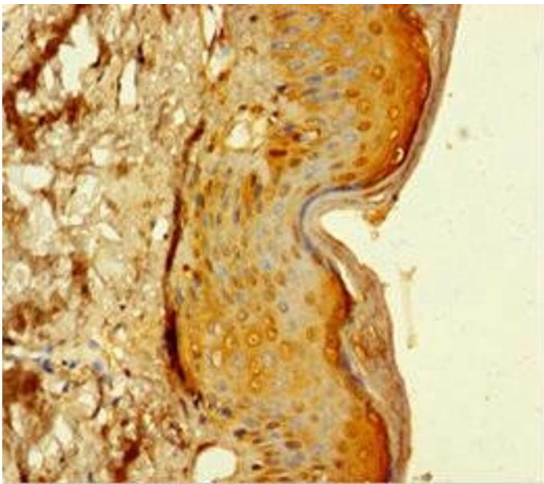
---

Storage Comment: Upon receipt, store at -20°C or -80°C. Avoid repeated freeze.



#### Immunohistochemistry

**Image 1.** Immunohistochemistry of paraffin-embedded human pancreatic tissue using ABIN7159033 at dilution of 1:100



#### Immunohistochemistry

**Image 2.** Immunohistochemistry of paraffin-embedded human skin tissue using ABIN7159033 at dilution of 1:100