

Datasheet for ABIN7159059  
**anti-MGP antibody (AA 20-96)**



[Go to Product page](#)

2 Images

### Overview

Quantity:	100 µg
Target:	MGP
Binding Specificity:	AA 20-96
Reactivity:	Human
Host:	Rabbit
Clonality:	Polyclonal
Conjugate:	This MGP antibody is un-conjugated
Application:	Immunohistochemistry (IHC), ELISA

### Product Details

Immunogen:	Recombinant Human Matrix Gla protein (20-96AA)
Isotype:	IgG
Cross-Reactivity:	Human
Purification:	>95%, Protein G purified

### Target Details

Target:	MGP
Alternative Name:	MGP ( <a href="#">MGP Products</a> )
Background:	Background: Associates with the organic matrix of bone and cartilage. Thought to act as an inhibitor of bone formation.

## Target Details

Aliases: Cell growth inhibiting gene 36 protein antibody, Cell growth-inhibiting gene 36 protein antibody, GAMMA-CARBOXYGLUTAMIC ACID PROTEIN, MATRIX antibody, GIG36 antibody, Matrix Gla protein antibody, MGLAP antibody, MGP antibody, MGP\_HUMAN antibody, NTI antibody

UniProt: [P08493](#)

## Application Details

Application Notes: Recommended dilution: IHC:1:200-1:500,

Restrictions: For Research Use only

## Handling

Format: Liquid

Buffer: Preservative: 0.03 % Proclin 300  
Constituents: 50 % Glycerol, 0.01M PBS, PH 7.4

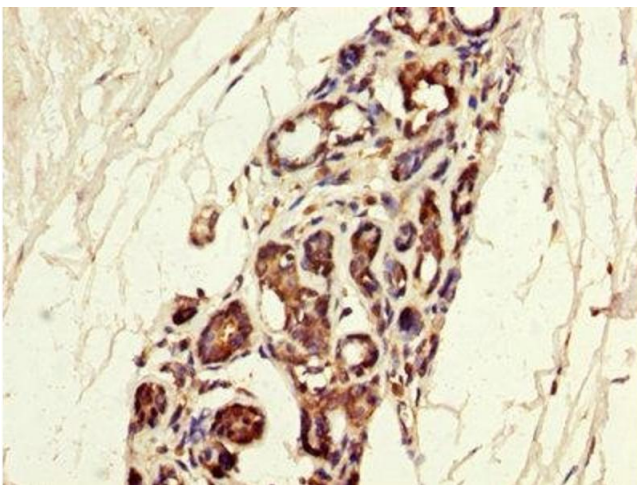
Preservative: ProClin

Precaution of Use: This product contains ProClin: a POISONOUS AND HAZARDOUS SUBSTANCE which should be handled by trained staff only.

Storage: -20 °C,-80 °C

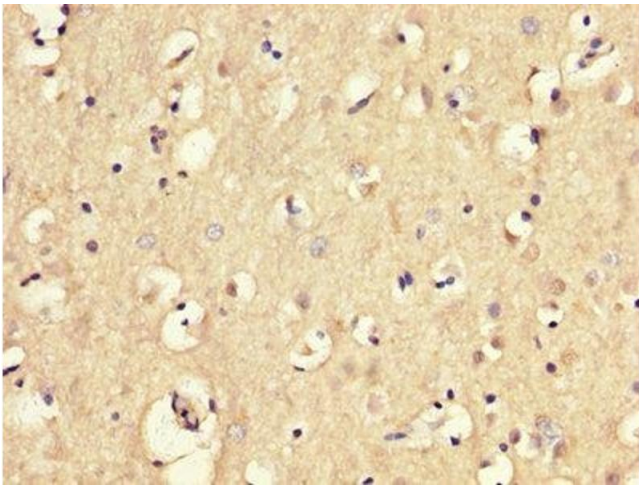
Storage Comment: Upon receipt, store at -20°C or -80°C. Avoid repeated freeze.

## Images



### Immunohistochemistry

**Image 1.** IHC image of ABIN7159059 diluted at 1:300 and staining in paraffin-embedded human breast cancer performed on a Leica Bond™ system. After dewaxing and hydration, antigen retrieval was mediated by high pressure in a citrate buffer (pH 6.0). Section was blocked with 10% normal goat serum 30min at RT. Then primary antibody (1% BSA) was incubated at 4°C overnight. The primary is detected by a biotinylated secondary antibody and visualized using an HRP conjugated SP system.



### Immunohistochemistry

**Image 2.** IHC image of ABIN7159059 diluted at 1:300 and staining in paraffin-embedded human brain tissue performed on a Leica Bond™ system. After dewaxing and hydration, antigen retrieval was mediated by high pressure in a citrate buffer (pH 6.0). Section was blocked with 10% normal goat serum 30min at RT. Then primary antibody (1% BSA) was incubated at 4°C overnight. The primary is detected by a biotinylated secondary antibody and visualized using an HRP conjugated SP system.