

Datasheet for ABIN7159063
anti-MMP14 antibody (AA 112-582)



[Go to Product page](#)

1 Image

Overview

Quantity:	100 µg
Target:	MMP14
Binding Specificity:	AA 112-582
Reactivity:	Human
Host:	Rabbit
Clonality:	Polyclonal
Conjugate:	This MMP14 antibody is un-conjugated
Application:	ELISA, Immunohistochemistry (IHC)

Product Details

Immunogen:	Recombinant Human Matrix metalloproteinase-14 protein (112-582AA)
Isotype:	IgG
Cross-Reactivity:	Human
Purification:	>95%, Protein G purified

Target Details

Target:	MMP14
Alternative Name:	MMP14 (MMP14 Products)
Background:	Background: Seems to specifically activate progelatinase A. May thus trigger invasion by tumor cells by activating progelatinase A on the tumor cell surface. May be involved in actin

Target Details

cytoskeleton reorganization by cleaving PTK7. Acts as a positive regulator of cell growth and migration via activation of MMP15. Involved in the formation of the fibrovascular tissues in association with pro-MMP2.

Aliases: Matrix metalloproteinase 14 (membrane inserted) antibody, Matrix metalloproteinase 14 antibody, Matrix metalloproteinase-14 antibody, Membrane type 1 matrix metalloproteinase antibody, Membrane type 1 metalloprotease antibody, Membrane type matrix metalloproteinase 1 antibody, Membrane-type matrix metalloproteinase 1 antibody, Membrane-type-1 matrix metalloproteinase antibody, MMP 14 antibody, MMP X1 antibody, MMP-14 antibody, MMP-X1 antibody, Mmp14 antibody, MMP14_HUMAN antibody, MMPX1 antibody, MT MMP 1 antibody, MT-MMP 1 antibody, MT1 MMP antibody, MT1-MMP antibody, MT1MMP antibody, MTMMP 1 antibody, MTMMP1 antibody

UniProt: [P50281](#)

Pathways: [Autophagy](#)

Application Details

Application Notes: Recommended dilution: IHC:1:500-1:1000,

Restrictions: For Research Use only

Handling

Format: Liquid

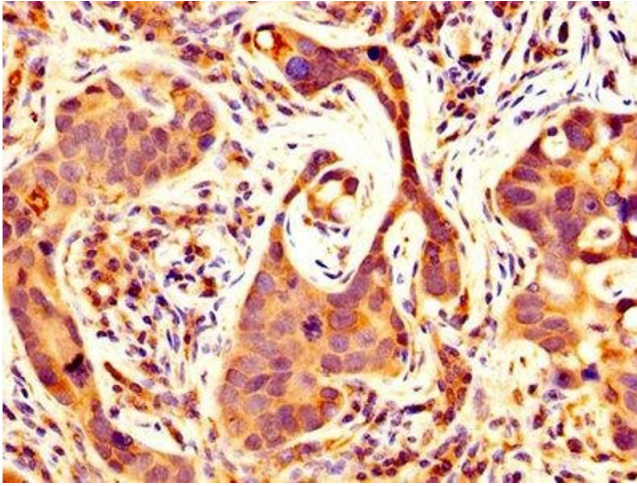
Buffer: Preservative: 0.03 % Proclin 300
Constituents: 50 % Glycerol, 0.01M PBS, PH 7.4

Preservative: ProClin

Precaution of Use: This product contains ProClin: a POISONOUS AND HAZARDOUS SUBSTANCE which should be handled by trained staff only.

Storage: -20 °C,-80 °C

Storage Comment: Upon receipt, store at -20°C or -80°C. Avoid repeated freeze.



Immunohistochemistry

Image 1. IHC image of ABIN7159063 diluted at 1:500 and staining in paraffin-embedded human pancreatic cancer performed on a Leica Bond™ system. After dewaxing and hydration, antigen retrieval was mediated by high pressure in a citrate buffer (pH 6.0). Section was blocked with 10% normal goat serum 30min at RT. Then primary antibody (1% BSA) was incubated at 4°C overnight. The primary is detected by a biotinylated secondary antibody and visualized using an HRP conjugated SP system.