

Datasheet for ABIN7159070
anti-MMP28 antibody (AA 351-475)[Go to Product page](#)

4 Images

Overview

Quantity:	100 µg
Target:	MMP28
Binding Specificity:	AA 351-475
Reactivity:	Human
Host:	Rabbit
Clonality:	Polyclonal
Conjugate:	This MMP28 antibody is un-conjugated
Application:	Western Blotting (WB), ELISA, Immunohistochemistry (IHC), Immunofluorescence (IF)

Product Details

Immunogen:	Recombinant Human Matrix metalloproteinase-28 protein (351-475AA)
Isotype:	IgG
Cross-Reactivity:	Human
Purification:	>95%, Protein G purified

Target Details

Target:	MMP28
Alternative Name:	MMP28 (MMP28 Products)
Background:	Background: Can degrade casein. Could play a role in tissues homeostasis and repair. Aliases: Epilysin antibody, Matrix metalloproteinase 28 antibody, Matrix metalloproteinase-28

Target Details

antibody, MM 28 antibody, MM28 antibody, MMP 25 antibody, MMP 28 antibody, MMP-28 antibody, MMP25 antibody, MMP28 antibody, MMP28_HUMAN antibody

UniProt: [Q9H239](#)

Application Details

Application Notes: Recommended dilution: WB:1:500-1:5000, IHC:1:20-1:200, IF:1:50-1:200,
Restrictions: For Research Use only

Handling

Format: Liquid

Buffer: Preservative: 0.03 % Proclin 300
Constituents: 50 % Glycerol, 0.01M PBS, pH 7.4

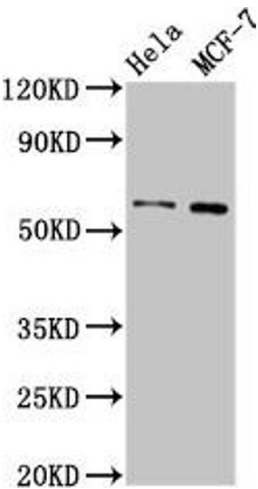
Preservative: ProClin

Precaution of Use: This product contains ProClin: a POISONOUS AND HAZARDOUS SUBSTANCE which should be handled by trained staff only.

Storage: -20 °C,-80 °C

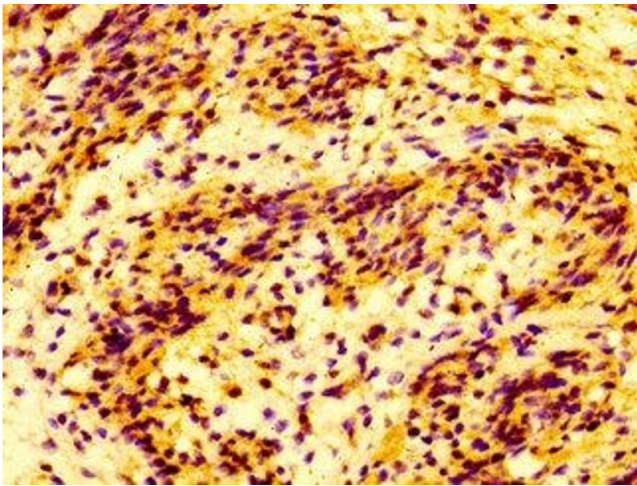
Storage Comment: Upon receipt, store at -20°C or -80°C. Avoid repeated freeze.

Images



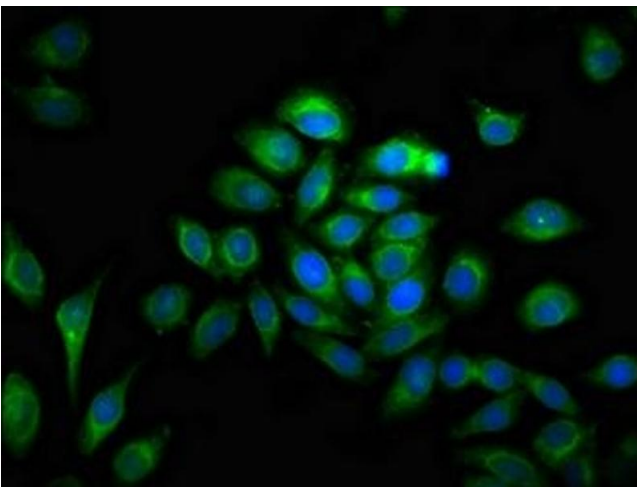
Western Blotting

Image 1. Western Blot Positive WB detected in: Hela whole cell lysate, MCF-7 whole cell lysate All lanes: MMP28 antibody at 3.2 µg/mL Secondary Goat polyclonal to rabbit IgG at 1/50000 dilution Predicted band size: 59, 15 kDa Observed band size: 59 kDa



Immunohistochemistry

Image 2. IHC image of ABIN7159070 diluted at 1:100 and staining in paraffin-embedded human lung tissue performed on a Leica Bond™ system. After dewaxing and hydration, antigen retrieval was mediated by high pressure in a citrate buffer (pH 6.0). Section was blocked with 10% normal goat serum 30min at RT. Then primary antibody (1% BSA) was incubated at 4°C overnight. The primary is detected by a biotinylated secondary antibody and visualized using an HRP conjugated SP system.



Immunofluorescence

Image 3. Immunofluorescence staining of A549 cells with ABIN7159070 at 1:100, counter-stained with DAPI. The cells were fixed in 4% formaldehyde, permeabilized using 0.2% Triton X-100 and blocked in 10% normal Goat Serum. The cells were then incubated with the antibody overnight at 4°C. The secondary antibody was Alexa Fluor 488-conjugated AffiniPure Goat Anti-Rabbit IgG(H+L).

Please check the [product details page](#) for more images. Overall 4 images are available for ABIN7159070.