

Datasheet for ABIN7159086
anti-MTBP antibody (AA 567-724)[Go to Product page](#)

1 Image

Overview

Quantity:	100 µg
Target:	MTBP
Binding Specificity:	AA 567-724
Reactivity:	Human
Host:	Rabbit
Clonality:	Polyclonal
Conjugate:	This MTBP antibody is un-conjugated
Application:	ELISA, Immunohistochemistry (IHC)

Product Details

Immunogen:	Recombinant Human Mdm2-binding protein (567-724AA)
Isotype:	IgG
Cross-Reactivity:	Human
Purification:	>95%, Protein G purified

Target Details

Target:	MTBP
Alternative Name:	MTBP (MTBP Products)
Background:	Background: Inhibits cell migration in vitro and suppresses the invasive behavior of tumor cells (By similarity). May play a role in MDM2-dependent p53/TP53 homeostasis in unstressed cells.

Target Details

Inhibits autoubiquitination of MDM2, thereby enhancing MDM2 stability. This promotes MDM2-mediated ubiquitination of p53/TP53 and its subsequent degradation.

Aliases: hMTBP antibody, MDM 2 binding protein antibody, MDM 2 BP antibody, MDM2 (mouse double minute 2) binding protein 104kD antibody, MDM2 (mouse double minute 2) binding protein antibody, MDM2 binding protein antibody, MDM2 BP antibody, Mdm2 transformed 3T3 cell double minute 2 p53 binding protein (mouse) binding protein 104 kDa antibody, Mdm2 transformed 3T3 cell double minute 2 p53 binding protein (mouse) binding protein antibody, Mdm2 transformed 3T3 cell double minute 2 p53 binding protein binding protein antibody, Mdm2-binding protein antibody, MDM2BP antibody, Mouse double minute 2 homolog binding protein antibody, MTBP antibody, MTBP_HUMAN antibody

UniProt: [Q96DY7](#)

Application Details

Application Notes: Recommended dilution: IHC:1:200-1:500,

Restrictions: For Research Use only

Handling

Format: Liquid

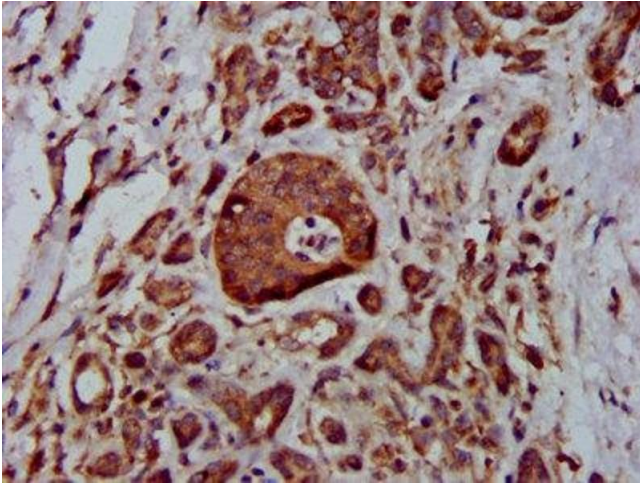
Buffer: Preservative: 0.03 % Proclin 300
Constituents: 50 % Glycerol, 0.01M PBS, pH 7.4

Preservative: ProClin

Precaution of Use: This product contains ProClin: a POISONOUS AND HAZARDOUS SUBSTANCE which should be handled by trained staff only.

Storage: -20 °C,-80 °C

Storage Comment: Upon receipt, store at -20°C or -80°C. Avoid repeated freeze.



Immunohistochemistry

Image 1. IHC image of ABIN7159086 diluted at 1:400 and staining in paraffin-embedded human pancreatic cancer performed on a Leica Bond™ system. After dewaxing and hydration, antigen retrieval was mediated by high pressure in a citrate buffer (pH 6.0). Section was blocked with 10% normal goat serum 30min at RT. Then primary antibody (1% BSA) was incubated at 4°C overnight. The primary is detected by a biotinylated secondary antibody and visualized using an HRP conjugated SP system.