

Datasheet for ABIN7159091
anti-MKS1 antibody (AA 150-300)

2 Images

[Go to Product page](#)

Overview

Quantity:	100 µL
Target:	MKS1
Binding Specificity:	AA 150-300
Reactivity:	Human
Host:	Rabbit
Clonality:	Polyclonal
Conjugate:	This MKS1 antibody is un-conjugated
Application:	ELISA, Immunohistochemistry (IHC), Immunoprecipitation (IP)

Product Details

Immunogen:	Recombinant Human Meckel syndrome type 1 protein (150-300AA)
Isotype:	IgG
Cross-Reactivity:	Human
Purification:	Antigen Affinity Purified

Target Details

Target:	MKS1
Alternative Name:	MKS1 (MKS1 Products)
Background:	Background: Component of the tectonic-like complex, a complex localized at the transition zone of primary cilia and acting as a barrier that prevents diffusion of transmembrane proteins

Target Details

between the cilia and plasma membranes. Involved in centrosome migration to the apical cell surface during early ciliogenesis. Required for ciliary structure and function, including a role in regulating length and appropriate number through modulating centrosome duplication.

Required for cell branching morphology.

Aliases: B8d3 antibody, BBS13 antibody, Dysencephalia splanchnocystica antibody, FABB proteome like protein antibody, FLJ20345 antibody, Gruber syndrome antibody, Meckel gruber syndrome antibody, Meckel gruber syndrome type 1 antibody, Meckel syndrome antibody, Meckel syndrome type 1 antibody, Meckel syndrome type 1 protein antibody, Meckel syndrome type 1 protein homolog antibody, MES antibody, MKS 1 antibody, MKS antibody, Mks1 antibody, MKS1_HUMAN antibody, POC12 antibody, POC12 centriolar protein homolog antibody

UniProt: [Q9NXB0](#)

Application Details

Application Notes: Recommended dilution: IHC:1:20-1:200, IP:1:200-1:2000,

Restrictions: For Research Use only

Handling

Format: Liquid

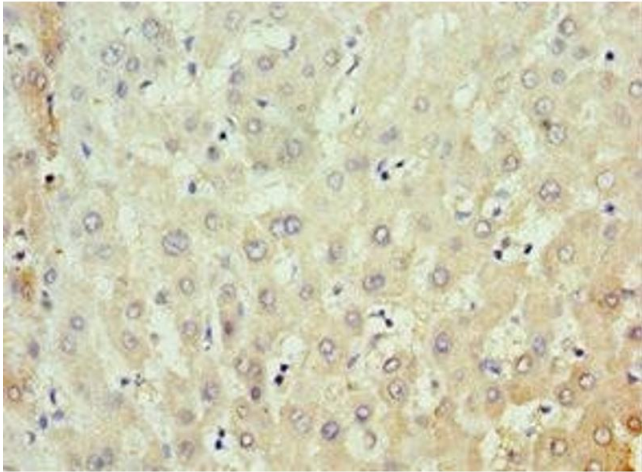
Buffer: PBS with 0.02 % sodium azide, 50 % glycerol, pH 7.3.

Preservative: Sodium azide

Precaution of Use: This product contains Sodium azide: a POISONOUS AND HAZARDOUS SUBSTANCE which should be handled by trained staff only.

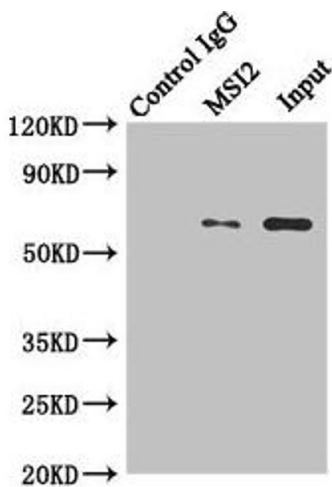
Storage: -20 °C,-80 °C

Storage Comment: Upon receipt, store at -20°C or -80°C. Avoid repeated freeze.



Immunohistochemistry

Image 1. Immunohistochemistry of paraffin-embedded human liver tissue using ABIN7159091 at dilution of 1:100



Western Blotting

Image 2. Immunoprecipitating MKS1 in Hela whole cell lysate Lane 1: Rabbit control IgG instead of (1 μ g) instead of ABIN7159091 in Hela whole cell lysate. For western blotting, a HRP-conjugated anti-rabbit IgG, specific to the non-reduced form of IgG was used as the Secondary antibody (1/50000) Lane 2: ABIN7159091 (4 μ g) + Hela whole cell lysate (500 μ g) Lane 3: Hela whole cell lysate (20 μ g)