

Datasheet for ABIN7159183

**anti-RIKEN cDNA 4930404A10 Gene (4930404A10RIK) (AA 18-91) antibody**[Go to Product page](#)**1** Image

## Overview

Quantity:	100 µg
Target:	RIKEN cDNA 4930404A10 Gene (4930404A10RIK)
Binding Specificity:	AA 18-91
Reactivity:	Human
Host:	Rabbit
Clonality:	Polyclonal
Conjugate:	Un-conjugated
Application:	ELISA, Immunohistochemistry (IHC)

## Product Details

Immunogen:	Recombinant Human Meiosis-specific kinetochore protein (18-91AA)
Isotype:	IgG
Cross-Reactivity:	Human
Purification:	>95%, Protein G purified

## Target Details

Target:	RIKEN cDNA 4930404A10 Gene (4930404A10RIK)
Alternative Name:	MEIKIN ( <a href="#">4930404A10RIK Products</a> )
Background:	Background: Key regulator of kinetochore function during meiosis I: required both for mono-orientation of kinetochores on sister chromosomes and protection of centromeric cohesin from

## Target Details

separase-mediated cleavage. Acts by facilitating kinetochore mono-orientation during meiosis I, when kinetochores on sister chromosomes face the same direction and are thus captured and pulled by spindle fibers from the same pole. Also required to prevent cleavage of cohesin at centromeres during meiosis I, possibly by acting as a regulator of the shugoshin-dependent protection pathway. Acts in collaboration with PLK1: required for PLK1 enrichment to kinetochores. Not required during meiosis II or mitosis.

Aliases: MEIKINMeiosis-specific kinetochore protein antibody

UniProt: [A0A087WXM9](#)

## Application Details

Application Notes: Recommended dilution: IHC:1:20-1:200,

Restrictions: For Research Use only

## Handling

Format: Liquid

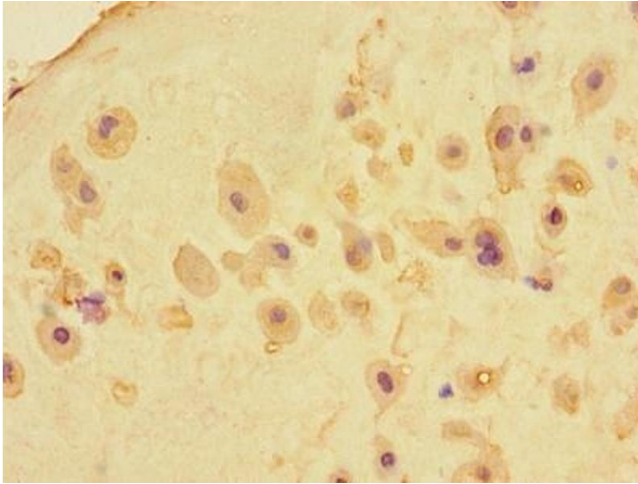
Buffer: Preservative: 0.03 % Proclin 300  
Constituents: 50 % Glycerol, 0.01M PBS, PH 7.4

Preservative: ProClin

Precaution of Use: This product contains ProClin: a POISONOUS AND HAZARDOUS SUBSTANCE which should be handled by trained staff only.

Storage: -20 °C,-80 °C

Storage Comment: Upon receipt, store at -20°C or -80°C. Avoid repeated freeze.



#### Immunohistochemistry

**Image 1.** Immunohistochemistry of paraffin-embedded human placenta tissue using ABIN7159183 at dilution of 1:100