

Datasheet for ABIN7159205
anti-MCHR2 antibody (AA 1-39)



[Go to Product page](#)

2 Images

Overview

Quantity:	100 µg
Target:	MCHR2
Binding Specificity:	AA 1-39
Reactivity:	Human
Host:	Rabbit
Clonality:	Polyclonal
Conjugate:	This MCHR2 antibody is un-conjugated
Application:	ELISA, Immunofluorescence (IF), Immunohistochemistry (IHC)

Product Details

Immunogen:	Recombinant Human Melanin-concentrating hormone receptor 2 protein (1-39AA)
Isotype:	IgG
Cross-Reactivity:	Human
Purification:	>95%, Protein G purified

Target Details

Target:	MCHR2
Alternative Name:	MCHR2 (MCHR2 Products)
Background:	Background: Receptor for melanin-concentrating hormone, coupled to G proteins that activate phosphoinositide hydrolysis.

Target Details

Aliases: G protein coupled receptor 145 antibody, G protein coupled receptor slt antibody, G-protein coupled receptor 145 antibody, GPR145 antibody, GPRv17 antibody, MCH receptor 2 antibody, MCH-2R antibody, MCH-R2 antibody, MCH2 antibody, MCH2R antibody, MCHR-2 antibody, MCHR2 antibody, MCHR2_HUMAN antibody, Melanin concentrating hormone receptor 2 antibody, Melanin-concentrating hormone receptor 2 antibody, SLT antibody

UniProt: [Q969V1](#)

Application Details

Application Notes: Recommended dilution: IHC:1:200-1:500, IF:1:50-1:200,

Restrictions: For Research Use only

Handling

Format: Liquid

Buffer: Preservative: 0.03 % Proclin 300
Constituents: 50 % Glycerol, 0.01M PBS, pH 7.4

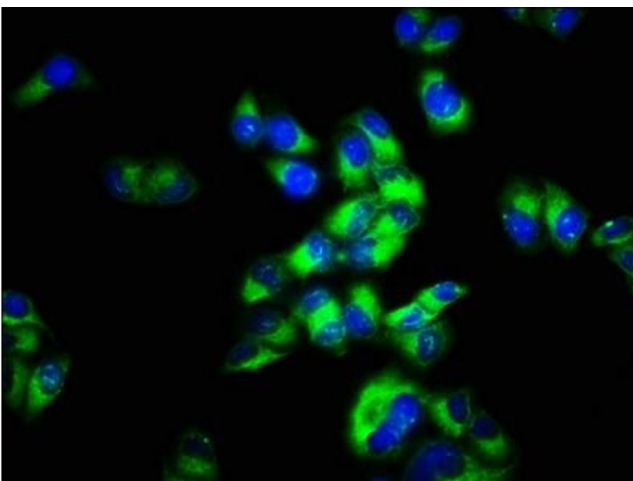
Preservative: ProClin

Precaution of Use: This product contains ProClin: a POISONOUS AND HAZARDOUS SUBSTANCE which should be handled by trained staff only.

Storage: -20 °C,-80 °C

Storage Comment: Upon receipt, store at -20°C or -80°C. Avoid repeated freeze.

Images



Immunofluorescence

Image 1. Immunofluorescence staining of HeLa cells with ABIN7159205 at 1:66, counter-stained with DAPI. The cells were fixed in 4% formaldehyde, permeabilized using 0.2% Triton X-100 and blocked in 10% normal Goat Serum. The cells were then incubated with the antibody overnight at 4°C. The secondary antibody was Alexa Fluor 488-conjugated AffiniPure Goat Anti-Rabbit IgG(H+L).



Immunohistochemistry

Image 2. IHC image of ABIN7159205 diluted at 1:200 and staining in paraffin-embedded human brain tissue performed on a Leica Bond™ system. After dewaxing and hydration, antigen retrieval was mediated by high pressure in a citrate buffer (pH 6.0). Section was blocked with 10% normal goat serum 30min at RT. Then primary antibody (1% BSA) was incubated at 4°C overnight. The primary is detected by a biotinylated secondary antibody and visualized using an HRP conjugated SP system.