

Datasheet for ABIN7159209
anti-MC3R antibody (AA 38-74)[Go to Product page](#)

3 Images

Overview

Quantity:	100 µg
Target:	MC3R
Binding Specificity:	AA 38-74
Reactivity:	Human
Host:	Rabbit
Clonality:	Polyclonal
Conjugate:	This MC3R antibody is un-conjugated
Application:	ELISA, Immunohistochemistry (IHC), Immunofluorescence (IF)

Product Details

Immunogen:	Recombinant Human Melanocortin receptor 3 protein (38-74AA)
Isotype:	IgG
Cross-Reactivity:	Human
Purification:	>95%, Protein G purified

Target Details

Target:	MC3R
Alternative Name:	MC3R (MC3R Products)
Background:	Background: Receptor for MSH (alpha, beta and gamma) and ACTH. This receptor is mediated by G proteins which activate adenylate cyclase. Required for expression of anticipatory patterns

Target Details

of activity and wakefulness during periods of limited nutrient availability and for the normal regulation of circadian clock activity in the brain.

Aliases: BMIQ9 antibody, MC3 antibody, MC3 R antibody, MC3 Receptor antibody, MC3-R antibody, Mc3r antibody, MC3R_HUMAN antibody, Melanocortin 3 receptor antibody, Melanocortin receptor 3 antibody, OB20 antibody, Obesity quantitative trait locus antibody, OQTL antibody

UniProt: [P41968](#)

Pathways: [cAMP Metabolic Process](#)

Application Details

Application Notes: Recommended dilution: IHC:1:200-1:500, IF:1:50-1:200,

Restrictions: For Research Use only

Handling

Format: Liquid

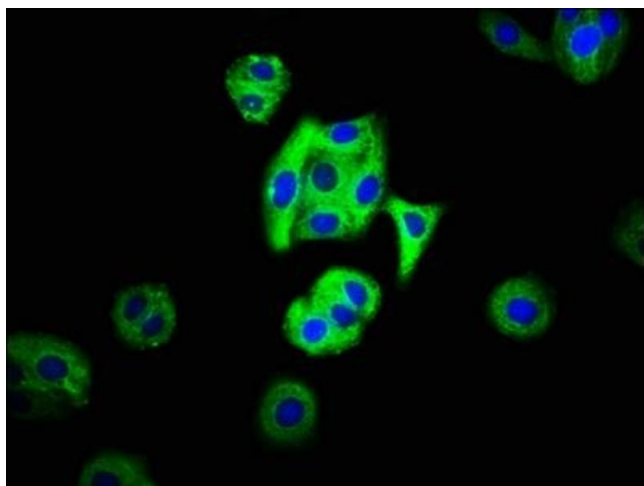
Buffer: Preservative: 0.03 % Proclin 300
Constituents: 50 % Glycerol, 0.01M PBS, pH 7.4

Preservative: ProClin

Precaution of Use: This product contains ProClin: a POISONOUS AND HAZARDOUS SUBSTANCE which should be handled by trained staff only.

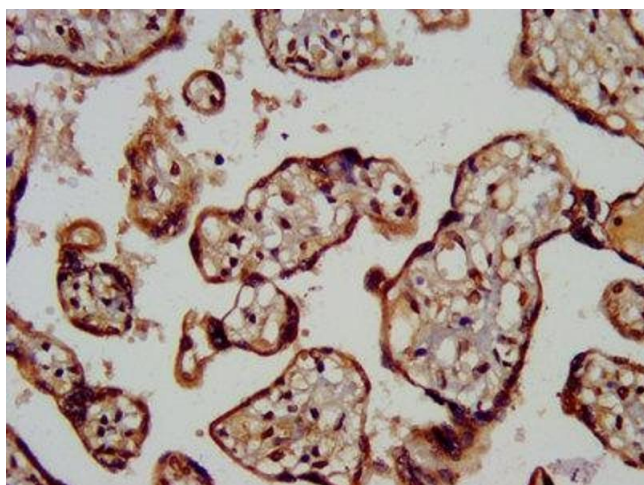
Storage: -20 °C, -80 °C

Storage Comment: Upon receipt, store at -20°C or -80°C. Avoid repeated freeze.



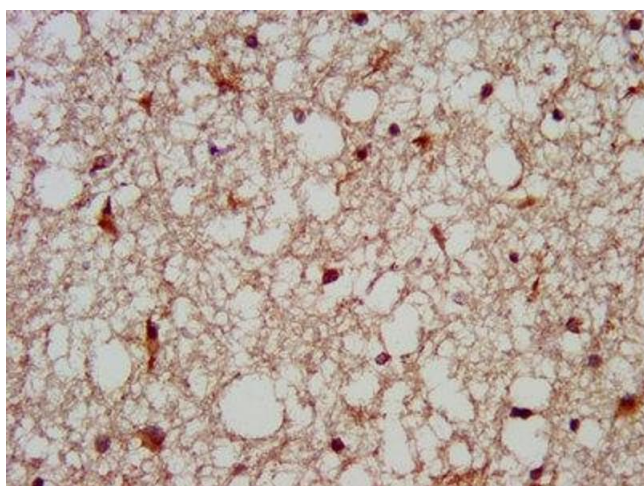
Immunofluorescence

Image 1. Immunofluorescence staining of HepG2 cells with ABIN7159209 at 1:66, counter-stained with DAPI. The cells were fixed in 4% formaldehyde, permeabilized using 0.2% Triton X-100 and blocked in 10% normal Goat Serum. The cells were then incubated with the antibody overnight at 4°C. The secondary antibody was Alexa Fluor 488-conjugated AffiniPure Goat Anti-Rabbit IgG(H+L).



Immunohistochemistry

Image 2. IHC image of ABIN7159209 diluted at 1:200 and staining in paraffin-embedded human placenta tissue performed on a Leica Bond™ system. After dewaxing and hydration, antigen retrieval was mediated by high pressure in a citrate buffer (pH 6.0). Section was blocked with 10% normal goat serum 30min at RT. Then primary antibody (1% BSA) was incubated at 4°C overnight. The primary is detected by a biotinylated secondary antibody and visualized using an HRP conjugated SP system.



Immunohistochemistry

Image 3. IHC image of ABIN7159209 diluted at 1:200 and staining in paraffin-embedded human brain tissue performed on a Leica Bond™ system. After dewaxing and hydration, antigen retrieval was mediated by high pressure in a citrate buffer (pH 6.0). Section was blocked with 10% normal goat serum 30min at RT. Then primary antibody (1% BSA) was incubated at 4°C overnight. The primary is detected by a biotinylated secondary antibody and visualized using an HRP conjugated SP system.