

Datasheet for ABIN7159229  
**anti-Melanoma gp100 antibody (AA 25-467)**

## 3 Images

[Go to Product page](#)

## Overview

Quantity:	100 µg
Target:	Melanoma gp100 (PMEL)
Binding Specificity:	AA 25-467
Reactivity:	Human
Host:	Rabbit
Clonality:	Polyclonal
Conjugate:	This Melanoma gp100 antibody is un-conjugated
Application:	Immunohistochemistry (IHC), Western Blotting (WB), ELISA

## Product Details

Immunogen:	Recombinant Human Melanocyte protein PMEL protein (25-467AA)
Isotype:	IgG
Cross-Reactivity:	Human
Purification:	>95%, Protein G purified

## Target Details

Target:	Melanoma gp100 (PMEL)
Alternative Name:	PMEL ( <a href="#">PMEL Products</a> )
Background:	Background: Plays a central role in the biogenesis of melanosomes. Involved in the maturation of melanosomes from stage I to II. The transition from stage I melanosomes to stage II

## Target Details

melanosomes involves an elongation of the vesicle, and the appearance within of distinct fibrillar structures. Release of the soluble form, ME20-S, could protect tumor cells from antibody mediated immunity.

Aliases: 95 kDa melanocyte specific secreted glycoprotein antibody, 95 kDa melanocyte-specific secreted glycoprotein antibody, D12S53E antibody, gp100 antibody, M-beta antibody, ME20 antibody, ME20 M/ME20 S antibody, ME20-M antibody, ME20-S antibody, ME20M antibody, ME20M/ME20S antibody, ME20S antibody, Melanocyte lineage specific antigen GP100 antibody, Melanocyte protein mel 17 antibody, Melanocyte protein Pmel 17 antibody, Melanocyte protein Pmel 17 precursor antibody, Melanocytes lineage-specific antigen GP100 antibody, Melanoma associated ME20 antigen antibody, Melanoma gp100 antibody, Melanoma-associated ME20 antigen antibody, Melanosomal matrix protein 17 antibody, Melanosomal matrix protein17 antibody, P1 antibody, p100 antibody, p26 antibody, PMEL 17 antibody, PMEL antibody, PMEL\_HUMAN antibody, PMEL17 antibody, Premelanosome protein antibody, Secreted melanoma-associated ME20 antigen antibody, SI antibody, SIL antibody, SILV antibody, Silver (mouse homolog) like antibody, Silver homolog antibody, Silver locus protein homolog antibody, Silver, mouse, homolog of antibody

UniProt: [P40967](#)

## Application Details

Application Notes: Recommended dilution: WB:1:1000-1:5000, IHC:1:200-1:500,

Restrictions: For Research Use only

## Handling

Format: Liquid

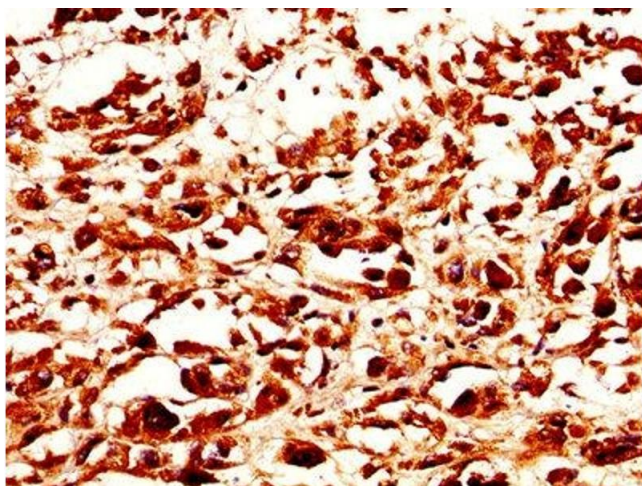
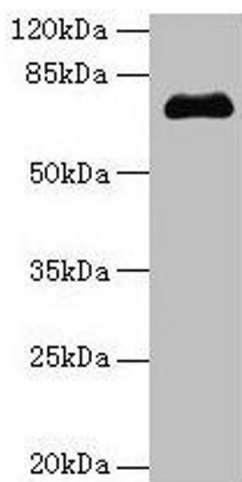
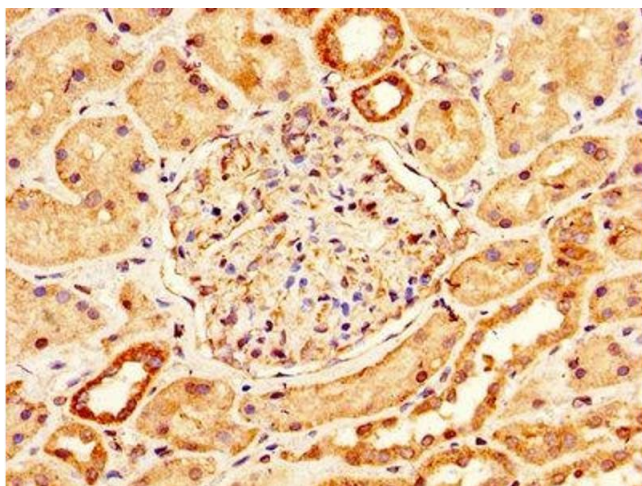
Buffer: Preservative: 0.03 % Proclin 300  
Constituents: 50 % Glycerol, 0.01M PBS, PH 7.4

Preservative: ProClin

Precaution of Use: This product contains ProClin: a POISONOUS AND HAZARDOUS SUBSTANCE which should be handled by trained staff only.

Storage: -20 °C,-80 °C

Storage Comment: Upon receipt, store at -20°C or -80°C. Avoid repeated freeze.



### Immunohistochemistry

**Image 1.** IHC image of ABIN7159229 diluted at 1:200 and staining in paraffin-embedded human kidney tissue performed on a Leica Bond™ system. After dewaxing and hydration, antigen retrieval was mediated by high pressure in a citrate buffer (pH 6.0). Section was blocked with 10% normal goat serum 30min at RT. Then primary antibody (1% BSA) was incubated at 4°C overnight. The primary is detected by a biotinylated secondary antibody and visualized using an HRP conjugated SP system.

### Western Blotting

**Image 2.** Western blot All lanes: PMEL antibody at 14 µg/mL + Jurkat whole cell lysate Secondary Goat polyclonal to rabbit IgG at 1/10000 dilution Predicted band size: 71, 61, 67 kDa Observed band size: 71 kDa

### Immunohistochemistry

**Image 3.** IHC image of ABIN7159229 diluted at 1:200 and staining in paraffin-embedded human melanoma performed on a Leica Bond™ system. After dewaxing and hydration, antigen retrieval was mediated by high pressure in a citrate buffer (pH 6.0). Section was blocked with 10% normal goat serum 30min at RT. Then primary antibody (1% BSA) was incubated at 4°C overnight. The primary is detected by a biotinylated secondary antibody and visualized using an HRP conjugated SP system.