

Datasheet for ABIN7159273  
**anti-MAGEA8 antibody (AA 1-270)**



[Go to Product page](#)

3 Images

### Overview

Quantity:	100 µg
Target:	MAGEA8
Binding Specificity:	AA 1-270
Reactivity:	Human
Host:	Rabbit
Clonality:	Polyclonal
Conjugate:	This MAGEA8 antibody is un-conjugated
Application:	ELISA, Immunohistochemistry (IHC), Immunofluorescence (IF)

### Product Details

Immunogen:	Recombinant Human Melanoma-associated antigen 8 protein (1-270AA)
Isotype:	IgG
Cross-Reactivity:	Human
Purification:	>95%, Protein G purified

### Target Details

Target:	MAGEA8
Alternative Name:	MAGEA8 ( <a href="#">MAGEA8 Products</a> )
Background:	Background: Not known, though may play a role in embryonal development and tumor transformation or aspects of tumor progression.

## Target Details

Aliases: Cancer/testis antigen 1.8 antibody, cancer/testis antigen family 1, member 8 antibody, CT1.8 antibody, MAGA8\_HUMAN antibody, MAGE 8 antigen antibody, MAGE-8 antigen antibody, MAGE8 antigen antibody, MAGEA8 antibody, Melanoma antigen family A 8 antibody, Melanoma associated antigen 8 antibody, Melanoma-associated antigen 8 antibody, MGC2182 antibody

UniProt: [P43361](#)

## Application Details

Application Notes: Recommended dilution: IHC:1:20-1:200, IF:1:50-1:200,

Restrictions: For Research Use only

## Handling

Format: Liquid

Buffer: Preservative: 0.03 % Proclin 300  
Constituents: 50 % Glycerol, 0.01M PBS, PH 7.4

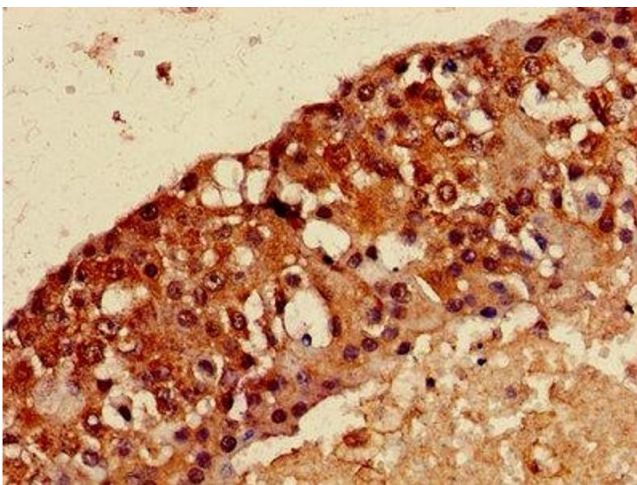
Preservative: ProClin

Precaution of Use: This product contains ProClin: a POISONOUS AND HAZARDOUS SUBSTANCE which should be handled by trained staff only.

Storage: -20 °C,-80 °C

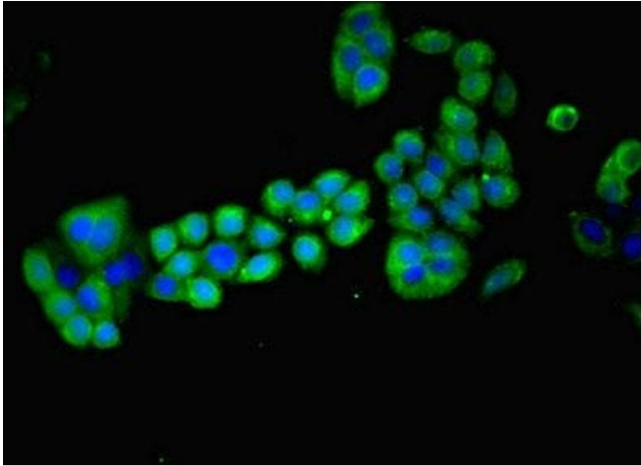
Storage Comment: Upon receipt, store at -20°C or -80°C. Avoid repeated freeze.

## Images



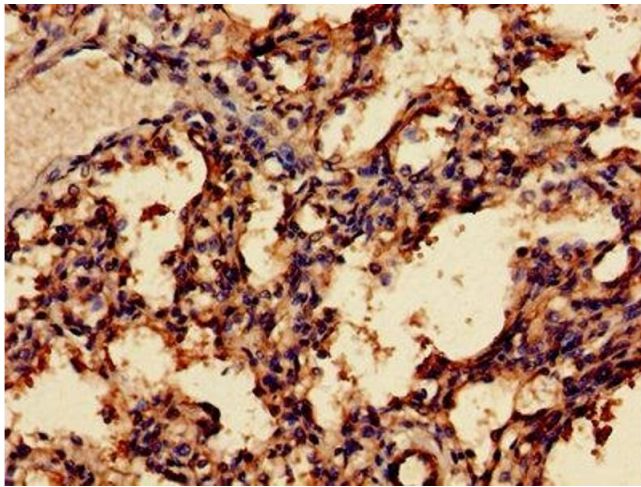
### Immunohistochemistry

**Image 1.** Immunohistochemistry of paraffin-embedded human breast cancer using ABIN7159273 at dilution of 1:100



### Immunofluorescence

**Image 2.** Immunofluorescent analysis of PC-3 cells using ABIN7159273 at dilution of 1:100 and Alexa Fluor 488-conjugated AffiniPure Goat Anti-Rabbit IgG(H+L)



### Immunohistochemistry

**Image 3.** Immunohistochemistry of paraffin-embedded human lung tissue using ABIN7159273 at dilution of 1:100