

Datasheet for ABIN7159281
anti-MAGEB1 antibody (AA 1-300)



[Go to Product page](#)

1 Image

Overview

Quantity:	100 µg
Target:	MAGEB1
Binding Specificity:	AA 1-300
Reactivity:	Human
Host:	Rabbit
Clonality:	Polyclonal
Conjugate:	This MAGEB1 antibody is un-conjugated
Application:	Western Blotting (WB), ELISA

Product Details

Immunogen:	Recombinant Human Melanoma-associated antigen B10 protein (1-300AA)
Isotype:	IgG
Cross-Reactivity:	Human, Mouse
Purification:	>95%, Protein G purified

Target Details

Target:	MAGEB1
Alternative Name:	MAGEB1 (MAGEB1 Products)
Background:	MAGEB10 antibody, Melanoma-associated antigen B10 antibody, MAGE-B10 antigen antibody
UniProt:	Q96LZ2

Application Details

Application Notes: Recommended dilution: WB:1:1000-1:5000,

Restrictions: For Research Use only

Handling

Format: Liquid

Buffer: Preservative: 0.03 % Proclin 300
Constituents: 50 % Glycerol, 0.01M PBS, PH 7.4

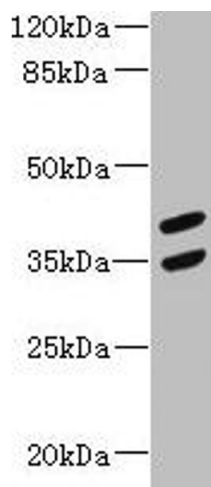
Preservative: ProClin

Precaution of Use: This product contains ProClin: a POISONOUS AND HAZARDOUS SUBSTANCE which should be handled by trained staff only.

Storage: -20 °C,-80 °C

Storage Comment: Upon receipt, store at -20°C or -80°C. Avoid repeated freeze.

Images



Western Blotting

Image 1. Western blot All lanes: MAGEB10 antibody at 12 μ g/mL + Mouse heart tissue Secondary Goat polyclonal to rabbit IgG at 1/10000 dilution Predicted band size: 39 kDa
Observed band size: 39, 35 kDa