



[Go to Product page](#)

Datasheet for ABIN7159356
anti-MAGI2 antibody (AA 1308-1455)

2 Images

Overview

Quantity:	100 µg
Target:	MAGI2
Binding Specificity:	AA 1308-1455
Reactivity:	Human
Host:	Rabbit
Clonality:	Polyclonal
Conjugate:	This MAGI2 antibody is un-conjugated
Application:	ELISA, Immunohistochemistry (IHC), Immunofluorescence (IF)

Product Details

Immunogen:	Recombinant Human Membrane-associated guanylate kinase, WW and PDZ domain-containing protein 2 protein (1308-1455AA)
Isotype:	IgG
Cross-Reactivity:	Human
Purification:	>95%, Protein G purified

Target Details

Target:	MAGI2
Alternative Name:	MAGI2 (MAGI2 Products)
Background:	Background: Seems to act as scaffold molecule at synaptic junctions by assembling

Target Details

neurotransmitter receptors and cell adhesion proteins. May play a role in regulating activin-mediated signaling in neuronal cells. Enhances the ability of PTEN to suppress AKT1 activation. Plays a role in nerve growth factor (NGF)-induced recruitment of RAPGEF2 to late endosomes and neurite outgrowth.

Aliases: Activin receptor interacting protein 1 antibody, Acvri1 antibody, Acvrin1 antibody, ACVRIP1 antibody, AIP 1 antibody, Aip-1 antibody, ARIP1 antibody, Atrophin 1 interacting protein 1 antibody, Atrophin 1 interacting protein A antibody, Atrophin-1-interacting protein 1 antibody, Atrophin-1-interacting protein A antibody, KIAA0705 antibody, MAGI-2 antibody, MAGI2 antibody, MAGI2_HUMAN antibody, Membrane associated guanylate kinase 2 antibody, Membrane associated guanylate kinase inverted 2 antibody, Membrane associated guanylate kinase WW and PDZ domain containing 2 antibody, Membrane associated guanylate kinase WW and PDZ domain containing protein 2 antibody, Membrane-associated guanylate kinase antibody, Membrane-associated guanylate kinase inverted 2 antibody, S SCAM antibody, SSCAM antibody, WW and PDZ domain-containing protein 2 antibody

UniProt: [Q86UL8](#)

Pathways: [Neurotrophin Signaling Pathway](#)

Application Details

Application Notes: Recommended dilution: IHC:1:20-1:200, IF:1:50-1:200,

Restrictions: For Research Use only

Handling

Format: Liquid

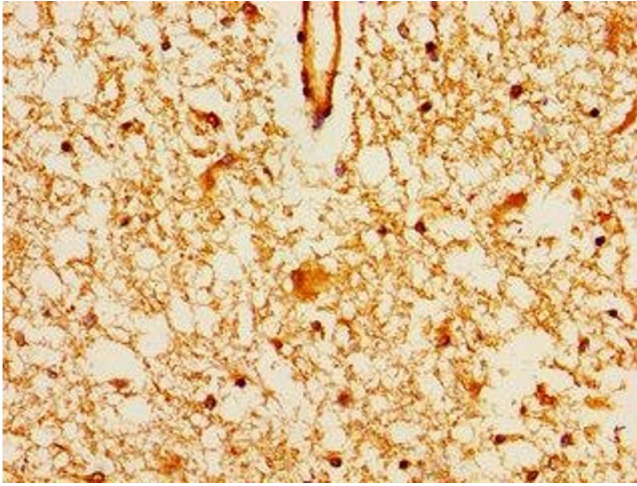
Buffer: Preservative: 0.03 % Proclin 300
Constituents: 50 % Glycerol, 0.01M PBS, pH 7.4

Preservative: ProClin

Precaution of Use: This product contains ProClin: a POISONOUS AND HAZARDOUS SUBSTANCE which should be handled by trained staff only.

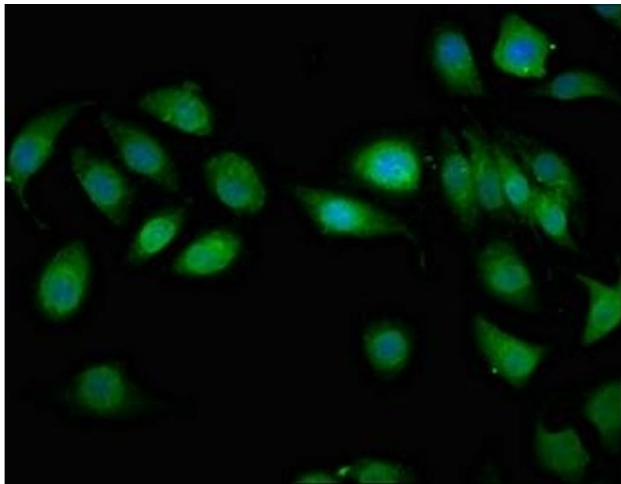
Storage: -20 °C,-80 °C

Storage Comment: Upon receipt, store at -20°C or -80°C. Avoid repeated freeze.



Immunohistochemistry

Image 1. Immunohistochemistry of paraffin-embedded human brain tissue using ABIN7159356 at dilution of 1:100



Immunofluorescence

Image 2. Immunofluorescent analysis of A549 cells using ABIN7159356 at dilution of 1:100 and Alexa Fluor 488-conjugated AffiniPure Goat Anti-Rabbit IgG(H+L)