

Datasheet for ABIN7159368
anti-PKMYT1 antibody (AA 900-1101)[Go to Product page](#)

2 Images

Overview

Quantity:	100 µg
Target:	PKMYT1
Binding Specificity:	AA 900-1101
Reactivity:	Human
Host:	Rabbit
Clonality:	Polyclonal
Conjugate:	This PKMYT1 antibody is un-conjugated
Application:	ELISA, Immunohistochemistry (IHC)

Product Details

Immunogen:	Recombinant Human Membrane-associated tyrosine- and threonine-specific cdc2-inhibitory kinase protein (900-1101AA)
Isotype:	IgG
Cross-Reactivity:	Human
Purification:	>95%, Protein G purified

Target Details

Target:	PKMYT1
Alternative Name:	PKMYT1 (PKMYT1 Products)
Background:	Background: Acts as a negative regulator of entry into mitosis (G2 to M transition) by

Target Details

phosphorylation of the CDK1 kinase specifically when CDK1 is complexed to cyclins. Mediates phosphorylation of CDK1 predominantly on 'Thr-14'. Also involved in Golgi fragmentation. May be involved in phosphorylation of CDK1 on 'Tyr-15' to a lesser degree, however tyrosine kinase activity is unclear and may be indirect. May be a downstream target of Notch signaling pathway during eye development.

Aliases: cdc2 inhibitory kinase antibody, DKFZp547K1610 antibody, FLJ20093 antibody, Membrane associated tyrosine and threonine specific cdc2 inhibitory kinase antibody, Membrane-associated tyrosine- and threonine-specific cdc2-inhibitory kinase antibody, MYT1 antibody, Myt1 kinase antibody, PKMYT 1 antibody, Pkmyt1 antibody, PMYT1_HUMAN antibody, PPP1R126 antibody, Protein kinase membrane associated tyrosine/threonine 1 antibody, Protein kinase Myt1 antibody, Protein phosphatase 1 regulatory subunit 126 antibody

UniProt: [Q99640](#)

Pathways: [Mitotic G1-G1/S Phases, M Phase](#)

Application Details

Application Notes: Recommended dilution: IHC:1:20-1:200,

Restrictions: For Research Use only

Handling

Format: Liquid

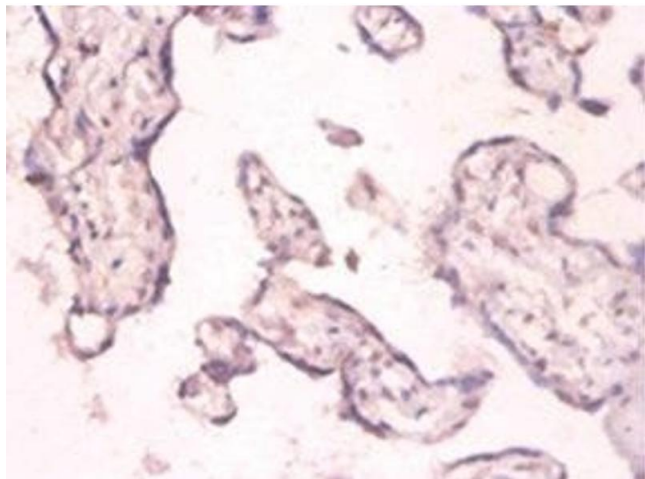
Buffer: Preservative: 0.03 % Proclin 300
Constituents: 50 % Glycerol, 0.01M PBS, PH 7.4

Preservative: ProClin

Precaution of Use: This product contains ProClin: a POISONOUS AND HAZARDOUS SUBSTANCE which should be handled by trained staff only.

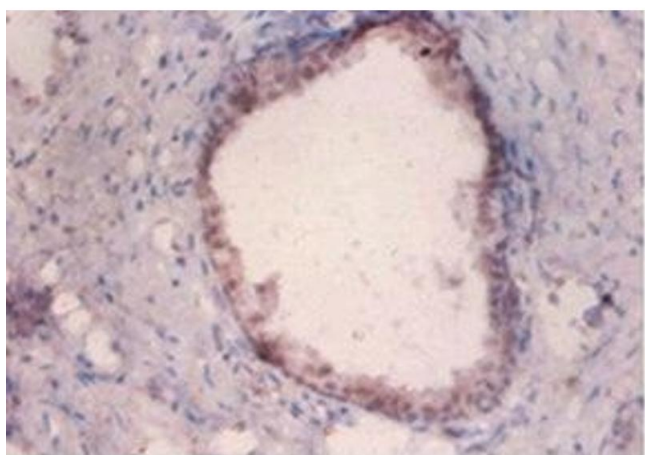
Storage: -20 °C, -80 °C

Storage Comment: Upon receipt, store at -20°C or -80°C. Avoid repeated freeze.



Immunohistochemistry

Image 1. Immunohistochemistry of paraffin-embedded human placenta tissue using ABIN7159368 at dilution of 1:100



Immunohistochemistry

Image 2. Immunohistochemistry of paraffin-embedded human prostate tissue using ABIN7159368 at dilution of 1:100