

Datasheet for ABIN7159373
anti-MBTPS1 antibody (AA 187-400)[Go to Product page](#)

1 Image

Overview

Quantity:	100 µL
Target:	MBTPS1
Binding Specificity:	AA 187-400
Reactivity:	Human
Host:	Rabbit
Clonality:	Polyclonal
Conjugate:	This MBTPS1 antibody is un-conjugated
Application:	ELISA, Immunofluorescence (IF)

Product Details

Immunogen:	Recombinant Human Membrane-bound transcription factor site-1 protease protein (187-400aa)
Isotype:	IgG
Cross-Reactivity:	Human
Purification:	>95%, Protein G purified

Target Details

Target:	MBTPS1
Alternative Name:	MBTPS1 (MBTPS1 Products)
Background:	Background: Serine protease that catalyzes the first step in the proteolytic activation of the sterol regulatory element-binding proteins (SREBPs). Other known substrates are BDNF,

Target Details

GNPTAB and ATF6. Cleaves after hydrophobic or small residues, provided that Arg or Lys is in position P4. Cleaves known substrates after Arg-Ser-Val-Leu (SERBP-2), Arg-His-Leu-Leu (ATF6), Arg-Gly-Leu-Thr (BDNF) and its own propeptide after Arg-Arg-Leu-Leu. Mediates the protein cleavage of GNPTAB into subunit alpha and beta, thereby participating in biogenesis of lysosomes.

Aliases: Membrane-bound transcription factor site-1 protease (EC 3.4.21.112) (Endopeptidase S1P) (Subtilisin/kexin-isozyme 1) (SKI-1), MBTPS1, KIAA0091 S1P SKI1

UniProt: [Q14703](#)

Pathways: [ER-Nucleus Signaling](#)

Application Details

Application Notes: Recommended dilution: IF:1:100-1:500,

Restrictions: For Research Use only

Handling

Format: Liquid

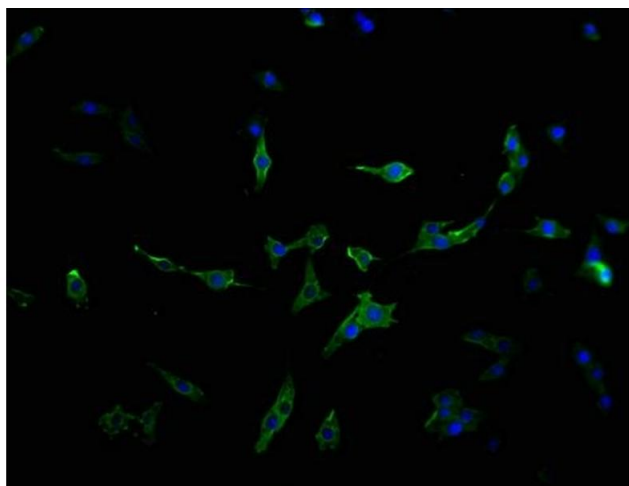
Buffer: Preservative: 0.03 % Proclin 300
Constituents: 50 % Glycerol, 0.01M PBS, pH 7.4

Preservative: ProClin

Precaution of Use: This product contains ProClin: a POISONOUS AND HAZARDOUS SUBSTANCE which should be handled by trained staff only.

Storage: -20 °C,-80 °C

Storage Comment: Upon receipt, store at -20°C or -80°C. Avoid repeated freeze.



Immunofluorescence

Image 1. Immunofluorescence staining of MCF-7 cells with ABIN7159373 at 1:100, counter-stained with DAPI. The cells were fixed in 4 % formaldehyde and blocked in 10 % normal Goat Serum. The cells were then incubated with the antibody overnight at 4 °C. The secondary antibody was Alexa Fluor 488-conjugated AffiniPure Goat Anti-Rabbit IgG(H+L).