



Datasheet for ABIN7159391
anti-MS4A6A antibody (AA 1-36)



[Go to Product page](#)

1 Image

Overview

Quantity:	100 µg
Target:	MS4A6A
Binding Specificity:	AA 1-36
Reactivity:	Human
Host:	Rabbit
Clonality:	Polyclonal
Conjugate:	This MS4A6A antibody is un-conjugated
Application:	ELISA, Immunofluorescence (IF)

Product Details

Immunogen:	Recombinant Human Membrane-spanning 4-domains subfamily A member 6A protein (1-36AA)
Isotype:	IgG
Cross-Reactivity:	Human
Purification:	>95%, Protein G purified

Target Details

Target:	MS4A6A
Alternative Name:	MS4A6A (MS4A6A Products)
Background:	Background: May be involved in signal transduction as a component of a multimeric receptor

Target Details

complex.

Aliases: MS4A6A antibody, 4SPAN3 antibody, CD20L3 antibody, MS4A6 antibody, CDA01 antibody, MSTP090Membrane-spanning 4-domains subfamily A member 6A antibody, CD20 antigen-like 3 antibody, Four-span transmembrane protein 3 antibody

UniProt: [Q9H2W1](#)

Application Details

Application Notes: Recommended dilution: IF:1:50-1:200,

Restrictions: For Research Use only

Handling

Format: Liquid

Buffer: Preservative: 0.03 % Proclin 300
Constituents: 50 % Glycerol, 0.01M PBS, PH 7.4

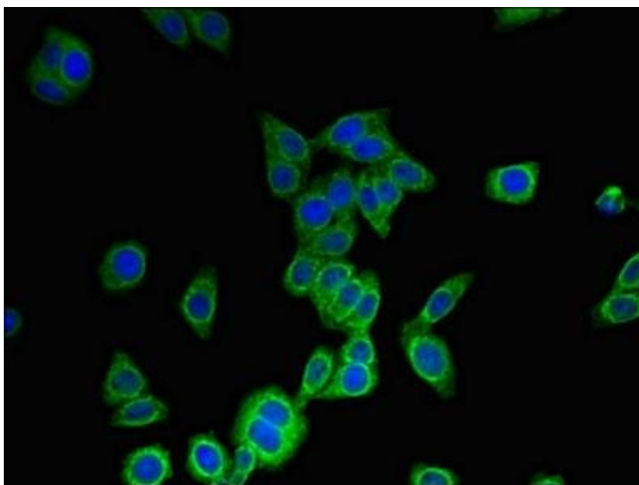
Preservative: ProClin

Precaution of Use: This product contains ProClin: a POISONOUS AND HAZARDOUS SUBSTANCE which should be handled by trained staff only.

Storage: -20 °C,-80 °C

Storage Comment: Upon receipt, store at -20°C or -80°C. Avoid repeated freeze.

Images



Immunofluorescence

Image 1. Immunofluorescent analysis of HepG2 cells using ABIN7159391 at dilution of 1:100 and Alexa Fluor 488-conjugated AffiniPure Goat Anti-Rabbit IgG(H+L)