



[Go to Product page](#)

Datasheet for ABIN7159411
anti-MEP1A antibody (AA 440-700)

1 Image

Overview

Quantity:	100 µL
Target:	MEP1A
Binding Specificity:	AA 440-700
Reactivity:	Human
Host:	Rabbit
Clonality:	Polyclonal
Conjugate:	This MEP1A antibody is un-conjugated
Application:	Immunohistochemistry (IHC), ELISA

Product Details

Immunogen:	Recombinant Human Meprin A subunit alpha protein (440-700AA)
Isotype:	IgG
Cross-Reactivity:	Human
Purification:	Antigen Affinity Purified

Target Details

Target:	MEP1A
Alternative Name:	MEP1A (MEP1A Products)
Background:	Endopeptidase 2 antibody, Endopeptidase-2 antibody, Mep1a antibody, MEP1A_HUMAN antibody, Meprin A alpha (PABA peptide hydrolase) antibody, Meprin A alpha subunit precursor

Target Details

antibody, Meprin A subunit alpha antibody, N benzoyl L tyrosyl P amino benzoic acid hydrolase alpha subunit antibody, N-benzoyl-L-tyrosyl-P-amino-benzoic acid hydrolase subunit alpha antibody, PABA peptide hydrolase antibody, PPH alpha antibody, PPHA antibody

UniProt: [Q16819](#)

Application Details

Application Notes: Recommended dilution: IHC:1:20-1:200,

Restrictions: For Research Use only

Handling

Format: Liquid

Buffer: PBS with 0.02 % sodium azide, 50 % glycerol, pH 7.3.

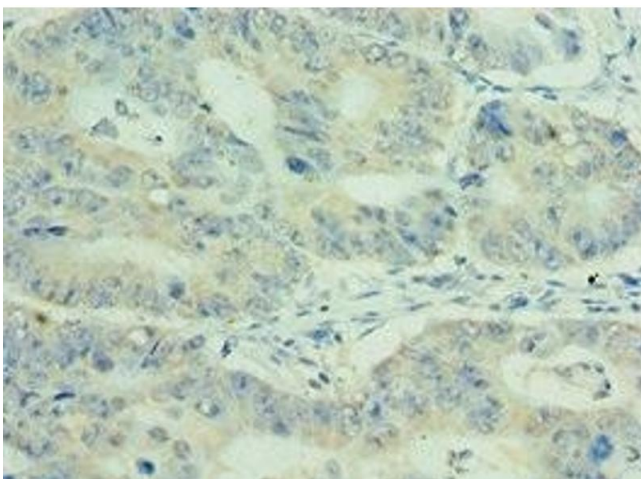
Preservative: Sodium azide

Precaution of Use: This product contains Sodium azide: a POISONOUS AND HAZARDOUS SUBSTANCE which should be handled by trained staff only.

Storage: -20 °C,-80 °C

Storage Comment: Upon receipt, store at -20°C or -80°C. Avoid repeated freeze.

Images



Immunohistochemistry

Image 1. Immunohistochemistry of paraffin-embedded human colon cancer using ABIN7159411 at dilution of 1:100