



[Go to Product page](#)

Datasheet for ABIN7159412

anti-Meprin B antibody (AA 480-652)

2 Images

Overview

Quantity:	100 µL
Target:	Meprin B (MEP1B)
Binding Specificity:	AA 480-652
Reactivity:	Human
Host:	Rabbit
Clonality:	Polyclonal
Conjugate:	This Meprin B antibody is un-conjugated
Application:	Western Blotting (WB), Immunohistochemistry (IHC), ELISA

Product Details

Immunogen:	Recombinant Human Meprin A subunit beta protein (480-652AA)
Isotype:	IgG
Cross-Reactivity:	Human, Mouse
Purification:	Antigen Affinity Purified

Target Details

Target:	Meprin B (MEP1B)
Alternative Name:	MEP1B (MEP1B Products)
Background:	Background: Membrane metallopeptidase that sheds many membrane-bound proteins. Exhibits a strong preference for acidic amino acids at the P1 position. Known substrates include:

Target Details

FGF19, VGFA, IL1B, IL18, procollagen I and III, E-cadherin, KLK7, gastrin, ADAM10, tenascin-C.

The presence of several pro-inflammatory cytokine among substrates implicate MEP1B in inflammation. It is also involved in tissue remodeling due to its capability to degrade extracellular matrix components.

Aliases: Endopeptidase 2 antibody, Endopeptidase-2 antibody, kinase splitting membranal proteinase antibody, KSMP antibody, Mep1b antibody, MEP1B_HUMAN antibody, Meprin 1 beta subunit antibody, Meprin A beta antibody, Meprin A beta subunit precursor antibody, Meprin A subunit beta antibody, Meprin B antibody, N benzoyl L tyrosyl P amino benzoic acid hydrolase beta subunit antibody, N-benzoyl-L-tyrosyl-P-amino-benzoic acid hydrolase subunit beta antibody, PABA peptide hydrolase antibody, PPH beta antibody

UniProt: [Q16820](#)

Application Details

Application Notes: Recommended dilution: WB:1:1000-1:5000, IHC:1:20-1:200,

Restrictions: For Research Use only

Handling

Format: Liquid

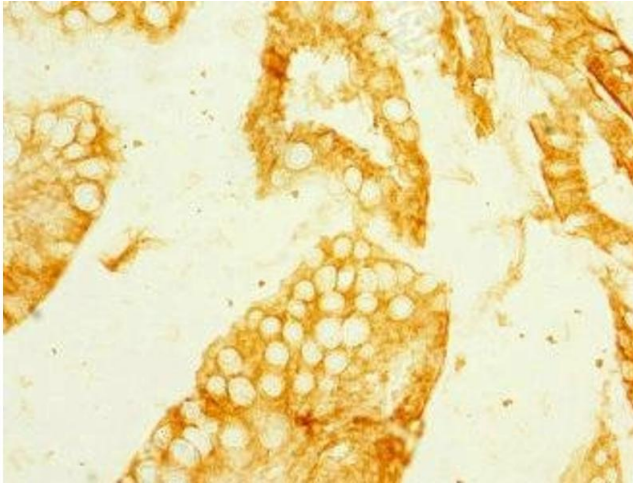
Buffer: PBS with 0.02 % sodium azide, 50 % glycerol, pH 7.3.

Preservative: Sodium azide

Precaution of Use: This product contains Sodium azide: a POISONOUS AND HAZARDOUS SUBSTANCE which should be handled by trained staff only.

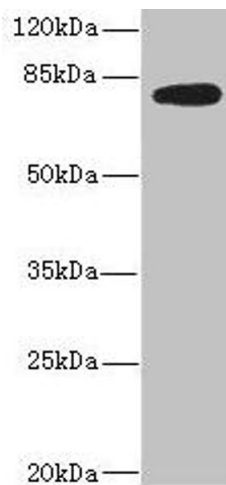
Storage: -20 °C,-80 °C

Storage Comment: Upon receipt, store at -20°C or -80°C. Avoid repeated freeze.



Immunohistochemistry

Image 1. Immunohistochemistry of paraffin-embedded human small intestine tissue using ABIN7159412 at dilution of 1:100



Western Blotting

Image 2. Western blot All lanes: MEP1B antibody IgG at 2.36 µg/mL + Mouse kidney tissue Secondary Goat polyclonal to rabbit IgG at 1/10000 dilution Predicted band size: 80 kDa Observed band size: 80 kDa