



[Go to Product page](#)

Datasheet for ABIN7159428

anti-Mesothelin antibody (AA 37-598)

4 Images

Overview

Quantity:	100 µg
Target:	Mesothelin (MSLN)
Binding Specificity:	AA 37-598
Reactivity:	Human
Host:	Rabbit
Clonality:	Polyclonal
Conjugate:	This Mesothelin antibody is un-conjugated
Application:	ELISA, Immunohistochemistry (IHC), Immunoprecipitation (IP), Immunofluorescence (IF)

Product Details

Immunogen:	Recombinant Human Mesothelin protein (37-598AA)
Isotype:	IgG
Cross-Reactivity:	Human
Purification:	>95%, Protein G purified

Target Details

Target:	Mesothelin (MSLN)
Alternative Name:	MSLN (MSLN Products)
Background:	Background: Membrane-anchored forms may play a role in cellular adhesion. Megakaryocyte-potentiating factor (MPF) potentiates megakaryocyte colony formation in vitro.

Target Details

Aliases: CAK 1 antibody, CAK1 antibody, CAK1 antigen antibody, cleaved form antibody, Megakaryocyte potentiating factor antibody, Mesothelin antibody, Mesothelin isoform 1 precursor antibody, MPF antibody, Msln antibody, MSLN_HUMAN antibody, Pre pro megakaryocyte potentiating factor antibody, Pre-pro-megakaryocyte-potentiating factor antibody, SMR antibody, SMRP antibody, Soluble MPF mesothelin related protein antibody

UniProt: [Q13421](#)

Pathways: [EGFR Signaling Pathway](#), [Positive Regulation of Peptide Hormone Secretion](#), [Intracellular Steroid Hormone Receptor Signaling Pathway](#), [Steroid Hormone Mediated Signaling Pathway](#), [Carbohydrate Homeostasis](#), [cAMP Metabolic Process](#), [Regulation of G-Protein Coupled Receptor Protein Signaling](#), [Positive Regulation of Endopeptidase Activity](#), [Regulation of Carbohydrate Metabolic Process](#)

Application Details

Application Notes: Recommended dilution: IHC:1:200-1:500, IF:1:50-1:200, IP:1:200-1:2000,

Restrictions: For Research Use only

Handling

Format: Liquid

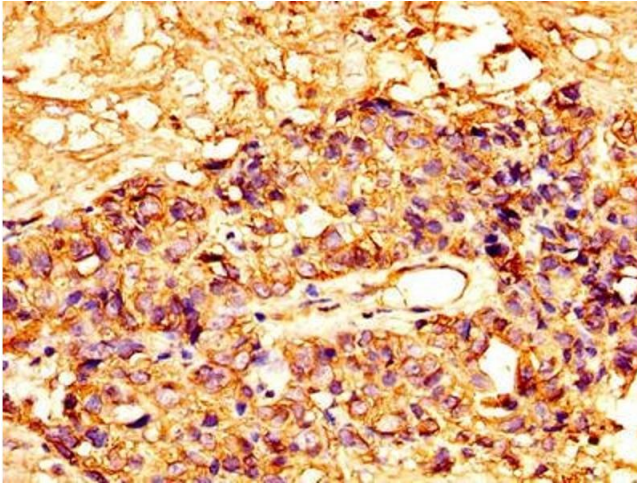
Buffer: Preservative: 0.03 % Proclin 300
Constituents: 50 % Glycerol, 0.01M PBS, PH 7.4

Preservative: ProClin

Precaution of Use: This product contains ProClin: a POISONOUS AND HAZARDOUS SUBSTANCE which should be handled by trained staff only.

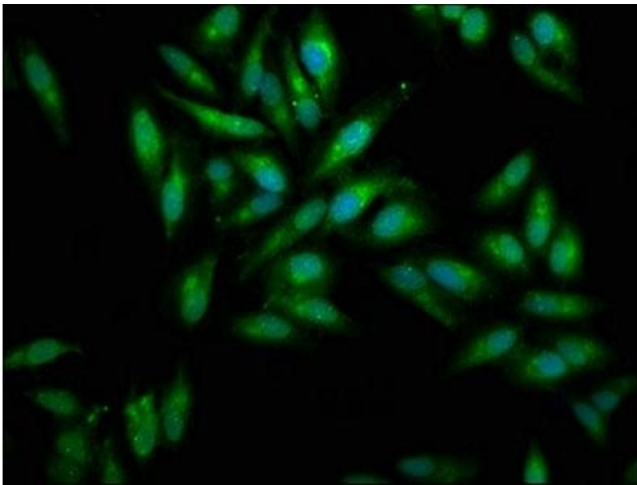
Storage: -20 °C,-80 °C

Storage Comment: Upon receipt, store at -20°C or -80°C. Avoid repeated freeze.



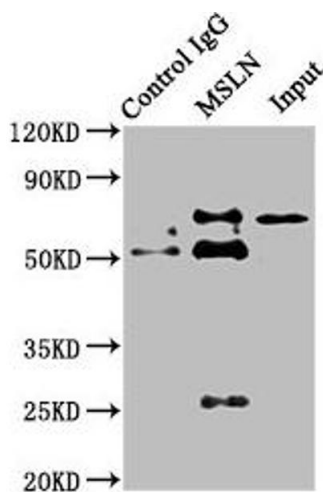
Immunohistochemistry

Image 1. IHC image of ABIN7159428 diluted at 1:300 and staining in paraffin-embedded human ovarian cancer performed on a Leica Bond™ system. After dewaxing and hydration, antigen retrieval was mediated by high pressure in a citrate buffer (pH 6.0). Section was blocked with 10% normal goat serum 30min at RT. Then primary antibody (1% BSA) was incubated at 4°C overnight. The primary is detected by a biotinylated secondary antibody and visualized using an HRP conjugated SP system.



Immunofluorescence

Image 2. Immunofluorescence staining of HeLa cells with ABIN7159428 at 1:100, counter-stained with DAPI. The cells were fixed in 4% formaldehyde, permeabilized using 0.2% Triton X-100 and blocked in 10% normal Goat Serum. The cells were then incubated with the antibody overnight at 4°C. The secondary antibody was Alexa Fluor 488-conjugated AffiniPure Goat Anti-Rabbit IgG(H+L).



Western Blotting

Image 3. Immunoprecipitating MSLN in HepG2 whole cell lysate Lane 1: Rabbit control IgG instead of ABIN7159428 in HepG2 whole cell lysate. For western blotting, a HRP-conjugated Protein G antibody was used as the secondary antibody (1/2000) Lane 2: ABIN7159428 (8 µg) + HepG2 whole cell lysate (500 µg) Lane 3: HepG2 whole cell lysate (10 µg)

Please check the [product details page](#) for more images. Overall 4 images are available for ABIN7159428.