



[Go to Product page](#)

Datasheet for ABIN7159436  
**anti-GRM2 antibody (AA 93-221)**

2 Images

Overview

Quantity:	100 µg
Target:	GRM2
Binding Specificity:	AA 93-221
Reactivity:	Human
Host:	Rabbit
Clonality:	Polyclonal
Conjugate:	This GRM2 antibody is un-conjugated
Application:	ELISA, Western Blotting (WB), Immunofluorescence (IF)

Product Details

Immunogen:	Recombinant Human Metabotropic glutamate receptor 2 protein (93-221AA)
Isotype:	IgG
Cross-Reactivity:	Human, Rat
Purification:	>95%, Protein G purified

Target Details

Target:	GRM2
Alternative Name:	GRM2 ( <a href="#">GRM2 Products</a> )
Background:	Background: G-protein coupled receptor for glutamate. Ligand binding causes a conformation change that triggers signaling via guanine nucleotide-binding proteins (G proteins) and

## Target Details

---

modulates the activity of down-stream effectors, such as adenylate cyclase. Signaling inhibits adenylate cyclase activity. May mediate suppression of neurotransmission or may be involved in synaptogenesis or synaptic stabilization.

Aliases: AMPA selective glutamate receptor 2 antibody, GLUR2 antibody, GLURB antibody, Glutamate metabotropic receptor 2 antibody, Glutamate receptor homolog antibody, Glutamate receptor metabotropic 2 antibody, GPRC1B antibody, GRM2 antibody, GRM2\_HUMAN antibody, Metabotropic glutamate receptor 2 antibody, mGlu2 antibody, mGluR2 antibody, OTTHUMP00000210984 antibody, OTTHUMP00000210986 antibody

---

UniProt: [Q14416](#)

---

Pathways: [cAMP Metabolic Process](#), [Dicarboxylic Acid Transport](#)

## Application Details

---

Application Notes: Recommended dilution: WB:1:500-1:5000, IF:1:50-1:200,

---

Restrictions: For Research Use only

## Handling

---

Format: Liquid

---

Buffer: Preservative: 0.03 % Proclin 300  
Constituents: 50 % Glycerol, 0.01M PBS, pH 7.4

---

Preservative: ProClin

---

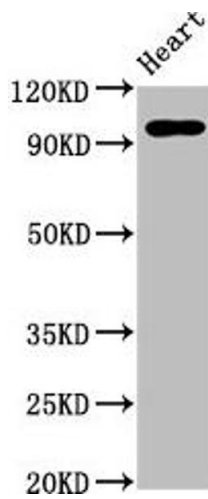
Precaution of Use: This product contains ProClin: a POISONOUS AND HAZARDOUS SUBSTANCE which should be handled by trained staff only.

---

Storage: -20 °C,-80 °C

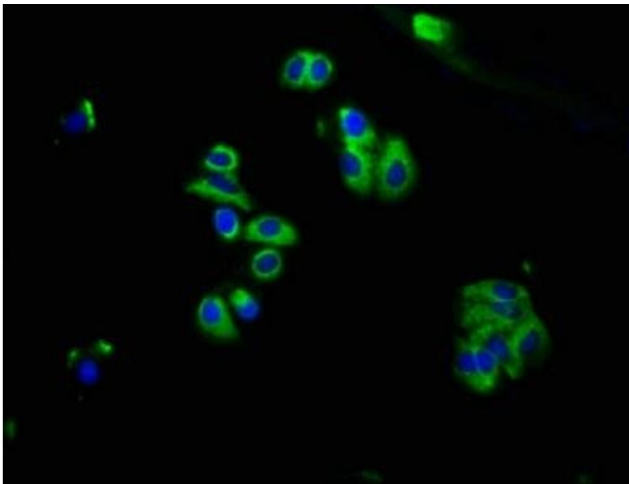
---

Storage Comment: Upon receipt, store at -20°C or -80°C. Avoid repeated freeze.



### Western Blotting

**Image 1.** Western Blot Positive WB detected in: Rat heart tissue All lanes: GRM2 antibody at 5 µg/mL Secondary Goat polyclonal to rabbit IgG at 1/50000 dilution Predicted band size: 96 kDa Observed band size: 96 kDa



### Immunofluorescence

**Image 2.** Immunofluorescence staining of HepG2 cells with ABIN7159436 at 1:66, counter-stained with DAPI. The cells were fixed in 4 % formaldehyde, permeabilized using 0.2 % Triton X-100 and blocked in 10 % normal Goat Serum. The cells were then incubated with the antibody overnight at 4 °C. The secondary antibody was Alexa Fluor 488-conjugated AffiniPure Goat Anti-Rabbit IgG(H+L).