

Datasheet for ABIN7159444

anti-Metabotropic Glutamate Receptor 6 antibody (AA 370-531)[Go to Product page](#)**1** Image

Overview

Quantity:	100 µg
Target:	Metabotropic Glutamate Receptor 6 (GRM6)
Binding Specificity:	AA 370-531
Reactivity:	Human
Host:	Rabbit
Clonality:	Polyclonal
Conjugate:	This Metabotropic Glutamate Receptor 6 antibody is un-conjugated
Application:	ELISA, Immunofluorescence (IF)

Product Details

Immunogen:	Recombinant Human Metabotropic glutamate receptor 6 protein (370-531AA)
Isotype:	IgG
Cross-Reactivity:	Human
Purification:	>95%, Protein G purified

Target Details

Target:	Metabotropic Glutamate Receptor 6 (GRM6)
Alternative Name:	GRM6 (GRM6 Products)
Background:	Background: G-protein coupled receptor for glutamate. Ligand binding causes a conformation change that triggers signaling via guanine nucleotide-binding proteins (G proteins) and

Target Details

modulates the activity of down-stream effectors, such as adenylate cyclase. Signaling inhibits adenylate cyclase activity (By similarity). Signaling stimulates TRPM1 channel activity and Ca(2+) uptake. Required for normal vision.

Aliases: CSNB1B antibody, DKFZp686H1993 antibody, GluR6 antibody, Glutamate receptor metabotropic 6 antibody, GPRC1F antibody, Grm6 antibody, GRM6_HUMAN antibody, Metabotropic glutamate receptor 6 antibody, mGlu6 antibody, mGluR6 antibody

UniProt: [O15303](#)

Application Details

Application Notes: Recommended dilution: IF:1:50-1:200,

Restrictions: For Research Use only

Handling

Format: Liquid

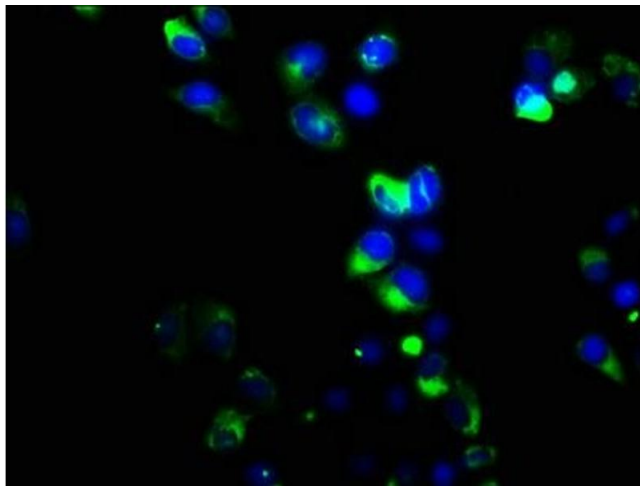
Buffer: Preservative: 0.03 % Proclin 300
Constituents: 50 % Glycerol, 0.01M PBS, pH 7.4

Preservative: ProClin

Precaution of Use: This product contains ProClin: a POISONOUS AND HAZARDOUS SUBSTANCE which should be handled by trained staff only.

Storage: -20 °C,-80 °C

Storage Comment: Upon receipt, store at -20°C or -80°C. Avoid repeated freeze.



Immunofluorescence

Image 1. Immunofluorescence staining of HeLa cells with ABIN7159444 at 1:133, counter-stained with DAPI. The cells were fixed in 4 % formaldehyde, permeabilized using 0.2 % Triton X-100 and blocked in 10 % normal Goat Serum. The cells were then incubated with the antibody overnight at 4 °C. The secondary antibody was Alexa Fluor 488-conjugated AffiniPure Goat Anti-Rabbit IgG(H+L).