

Datasheet for ABIN7159453
anti-Cyclin M2 antibody (AA 739-875)[Go to Product page](#)

2 Images

Overview

Quantity:	100 µg
Target:	Cyclin M2 (CNNM2)
Binding Specificity:	AA 739-875
Reactivity:	Human
Host:	Rabbit
Clonality:	Polyclonal
Conjugate:	This Cyclin M2 antibody is un-conjugated
Application:	ELISA, Immunofluorescence (IF), Immunohistochemistry (IHC)

Product Details

Immunogen:	Recombinant Human Metal transporter CNNM2 protein (739-875AA)
Isotype:	IgG
Cross-Reactivity:	Human
Purification:	>95%, Protein G purified

Target Details

Target:	Cyclin M2 (CNNM2)
Alternative Name:	CNNM2 (CNNM2 Products)
Background:	Background: Divalent metal cation transporter. Mediates transport of divalent metal cations in an order of Mg(2+) > Co(2+) > Mn(2+) > Sr(2+) > Ba(2+) > Cu(2+) > Fe(2+) (By similarity).

Target Details

Aliases: ACDP2 antibody, Ancient conserved domain containing protein 2 antibody, Ancient conserved domain protein 2 antibody, Ancient conserved domain-containing protein 2 antibody, CNNM 2 antibody, CNNM2 antibody, CNNM2_HUMAN antibody, Cyclin M2 antibody, Cyclin-M2 antibody, Metal transporter CNNM2 antibody, OTTHUMP00000020387 antibody, OTTHUMP00000020388 antibody

UniProt: [Q9H8M5](#)

Application Details

Application Notes: Recommended dilution: IHC:1:200-1:500, IF:1:50-1:200,

Restrictions: For Research Use only

Handling

Format: Liquid

Buffer: Preservative: 0.03 % Proclin 300
Constituents: 50 % Glycerol, 0.01M PBS, pH 7.4

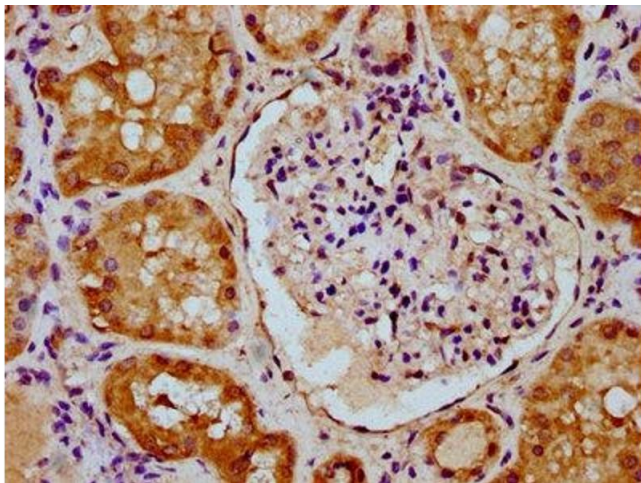
Preservative: ProClin

Precaution of Use: This product contains ProClin: a POISONOUS AND HAZARDOUS SUBSTANCE which should be handled by trained staff only.

Storage: -20 °C,-80 °C

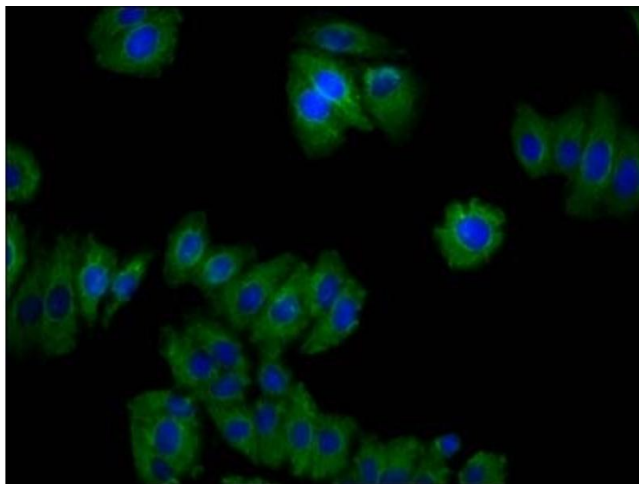
Storage Comment: Upon receipt, store at -20°C or -80°C. Avoid repeated freeze.

Images



Immunohistochemistry

Image 1. IHC image of ABIN7159453 diluted at 1:300 and staining in paraffin-embedded human kidney tissue performed on a Leica Bond™ system. After dewaxing and hydration, antigen retrieval was mediated by high pressure in a citrate buffer (pH 6.0). Section was blocked with 10% normal goat serum 30min at RT. Then primary antibody (1% BSA) was incubated at 4°C overnight. The primary is detected by a biotinylated secondary antibody and



visualized using an HRP conjugated SP system.

Immunofluorescence

Image 2. Immunofluorescence staining of HepG2 cells with ABIN7159453 at 1:100, counter-stained with DAPI. The cells were fixed in 4% formaldehyde, permeabilized using 0.2% Triton X-100 and blocked in 10% normal Goat Serum. The cells were then incubated with the antibody overnight at 4°C. The secondary antibody was Alexa Fluor 488-conjugated AffiniPure Goat Anti-Rabbit IgG(H+L).