

Datasheet for ABIN7159465  
**anti-OMA1 antibody (AA 22-194)**



[Go to Product page](#)

4 Images

## Overview

Quantity:	100 µg
Target:	OMA1
Binding Specificity:	AA 22-194
Reactivity:	Human
Host:	Rabbit
Clonality:	Polyclonal
Conjugate:	This OMA1 antibody is un-conjugated
Application:	Western Blotting (WB), ELISA, Immunohistochemistry (IHC), Immunofluorescence (IF)

## Product Details

Immunogen:	Recombinant Human Metalloendopeptidase OMA1, mitochondrial protein (22-194AA)
Isotype:	IgG
Cross-Reactivity:	Human
Purification:	>95%, Protein G purified

## Target Details

Target:	OMA1
Alternative Name:	OMA1 ( <a href="#">OMA1 Products</a> )
Background:	Background: Metalloprotease that is part of the quality control system in the inner membrane of mitochondria. Following stress conditions that induce loss of mitochondrial membrane

## Target Details

potential, mediates cleavage of OPA1 at S1 position, leading to OPA1 inactivation and negative regulation of mitochondrial fusion. May also cleave UQCC3 under these conditions. Its role in mitochondrial quality control is essential for regulating lipid metabolism as well as to maintain body temperature and energy expenditure under cold-stress conditions.

Aliases: 2010001009Rik antibody, DAB1 antibody, FLJ33782 antibody, Metalloendopeptidase OMA1 antibody, Metalloendopeptidase OMA1, mitochondrial antibody, Metalloprotease-related protein 1 antibody, mitochondrial antibody, MPRP 1 antibody, MPRP-1 antibody, MPRP1 antibody, OMA1 antibody, OMA1 homolog zinc metallopeptidase antibody, OMA1 homolog, zinc metallopeptidase (S. cerevisiae) antibody, OMA1 zinc metallopeptidase antibody, OMA1 zinc metallopeptidase homolog antibody, OMA1\_HUMAN antibody, Overlapping activity with M-AAA protease antibody, Overlapping with the m-AAA protease 1 homolog antibody, peptidase antibody, YKR087C antibody, Zinc metallopeptidase OMA1 antibody, ZMPOMA1 antibody

UniProt: [Q96E52](#)

## Application Details

Application Notes: Recommended dilution: WB:1:500-1:5000, IHC:1:200-1:500, IF:1:50-1:200,

Restrictions: For Research Use only

## Handling

Format: Liquid

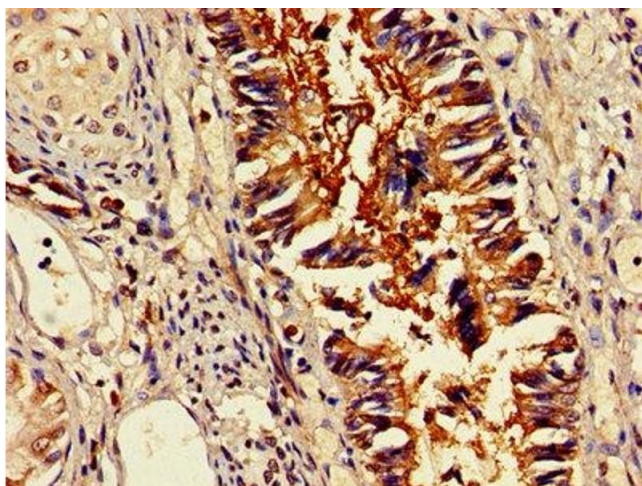
Buffer: Preservative: 0.03 % Proclin 300  
Constituents: 50 % Glycerol, 0.01M PBS, PH 7.4

Preservative: ProClin

Precaution of Use: This product contains ProClin: a POISONOUS AND HAZARDOUS SUBSTANCE which should be handled by trained staff only.

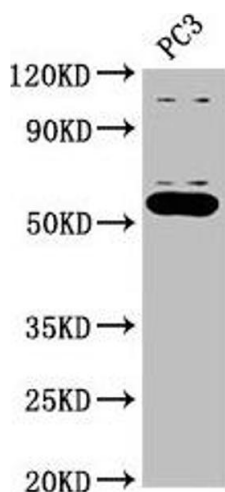
Storage: -20 °C,-80 °C

Storage Comment: Upon receipt, store at -20°C or -80°C. Avoid repeated freeze.



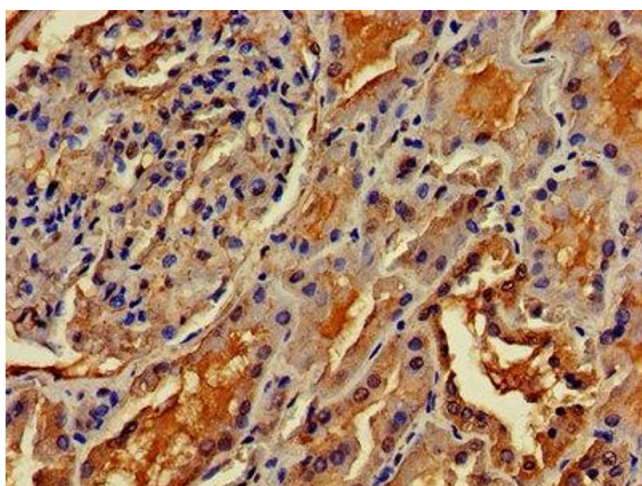
#### Immunohistochemistry

**Image 1.** IHC image of ABIN7159465 diluted at 1:400 and staining in paraffin-embedded human lung tissue performed on a Leica Bond™ system. After dewaxing and hydration, antigen retrieval was mediated by high pressure in a citrate buffer (pH 6.0). Section was blocked with 10% normal goat serum 30min at RT. Then primary antibody (1% BSA) was incubated at 4°C overnight. The primary is detected by a biotinylated secondary antibody and visualized using an HRP conjugated SP system.



#### Western Blotting

**Image 2.** Western Blot Positive WB detected in: PC-3 whole cell lysate All lanes: OMA1 antibody at 2.7 µg/mL Secondary Goat polyclonal to rabbit IgG at 1/50000 dilution Predicted band size: 61, 56 kDa Observed band size: 56 kDa



#### Immunohistochemistry

**Image 3.** IHC image of ABIN7159465 diluted at 1:400 and staining in paraffin-embedded human kidney tissue performed on a Leica Bond™ system. After dewaxing and hydration, antigen retrieval was mediated by high pressure in a citrate buffer (pH 6.0). Section was blocked with 10% normal goat serum 30min at RT. Then primary antibody (1% BSA) was incubated at 4°C overnight. The primary is detected by a biotinylated secondary antibody and visualized using an HRP conjugated SP system.

Please check the [product details page](#) for more images. Overall 4 images are available for ABIN7159465.