



[Go to Product page](#)

Datasheet for ABIN7159477

anti-TRABD2B antibody (AA 195-405)

2 Images

Overview

Quantity:	100 µL
Target:	TRABD2B
Binding Specificity:	AA 195-405
Reactivity:	Human
Host:	Rabbit
Clonality:	Polyclonal
Conjugate:	This TRABD2B antibody is un-conjugated
Application:	ELISA, Immunofluorescence (IF), Immunohistochemistry (IHC)

Product Details

Immunogen:	Recombinant Human Metalloprotease TIKI2 protein (195-405AA)
Isotype:	IgG
Cross-Reactivity:	Human
Purification:	Antigen Affinity Purified

Target Details

Target:	TRABD2B
Alternative Name:	TRABD2B (TRABD2B Products)
Background:	Background: Metalloprotease that acts as a negative regulator of the Wnt signaling pathway by mediating the cleavage of the 8 N-terminal residues of a subset of Wnt proteins. Following

Target Details

cleavage, Wnt proteins become oxidized and form large disulfide-bond oligomers, leading to their inactivation. Able to cleave WNT3A, WNT5, but not WNT11. Required for head formation. Aliases: TRABD2B antibody, HKAT antibody, TIKI2 antibody, Metalloprotease TIKI2 antibody, EC 3.4.-.- antibody, Heart antibody, kidney and adipose-enriched transmembrane protein homolog antibody, TRAB domain-containing protein 2B antibody

UniProt: [A6NFA1](#)

Application Details

Application Notes: Recommended dilution: IHC:1:20-1:200, IF:1:50-1:200,

Restrictions: For Research Use only

Handling

Format: Liquid

Buffer: Preservative: 0.03 % Proclin 300
Constituents: 50 % Glycerol, 0.01M PBS, pH 7.4

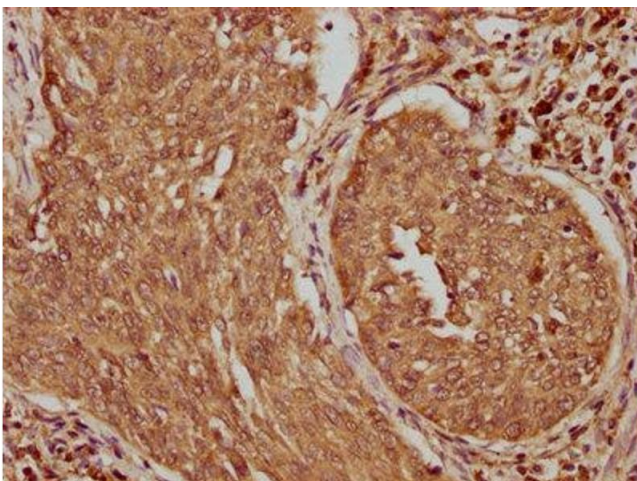
Preservative: ProClin

Precaution of Use: This product contains ProClin: a POISONOUS AND HAZARDOUS SUBSTANCE which should be handled by trained staff only.

Storage: -20 °C,-80 °C

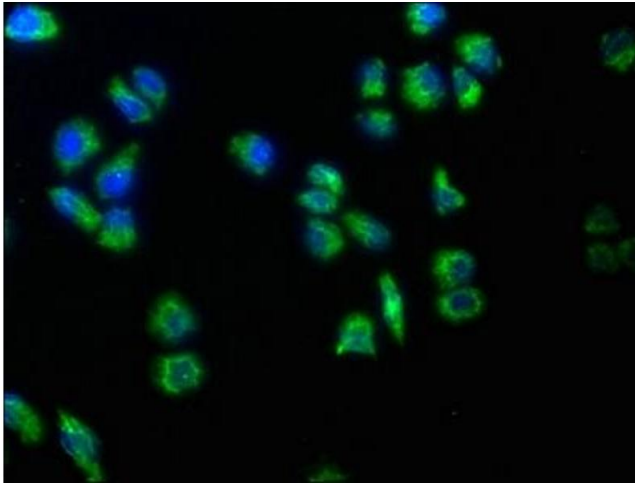
Storage Comment: Upon receipt, store at -20°C or -80°C. Avoid repeated freeze.

Images



Immunohistochemistry

Image 1. IHC image of ABIN7159477 diluted at 1:100 and staining in paraffin-embedded human cervical cancer performed on a Leica Bond™ system. After dewaxing and hydration, antigen retrieval was mediated by high pressure in a citrate buffer (pH 6.0). Section was blocked with 10 % normal goat serum 30 min at RT. Then primary antibody (1 % BSA) was incubated at 4 °C overnight. The primary is detected by a biotinylated secondary antibody and



visualized using an HRP conjugated SP system.

Immunofluorescence

Image 2. Immunofluorescence staining of HeLa cells with ABIN7159477 at 1:50, counter-stained with DAPI. The cells were fixed in 4 % formaldehyde, permeabilized using 0.2 % Triton X-100 and blocked in 10 % normal Goat Serum. The cells were then incubated with the antibody overnight at 4 °C. The secondary antibody was Alexa Fluor 488-conjugated AffiniPure Goat Anti-Rabbit IgG(H+L).