

Datasheet for ABIN7159505
anti-STEAP3 antibody (AA 1-207)[Go to Product page](#)

3 Images

Overview

Quantity:	100 µg
Target:	STEAP3
Binding Specificity:	AA 1-207
Reactivity:	Human
Host:	Rabbit
Clonality:	Polyclonal
Conjugate:	This STEAP3 antibody is un-conjugated
Application:	Western Blotting (WB), ELISA, Immunohistochemistry (IHC), Immunofluorescence (IF)

Product Details

Immunogen:	Recombinant Human Metalloreductase STEAP3 protein (1-207AA)
Isotype:	IgG
Cross-Reactivity:	Human
Purification:	>95%, Protein G purified

Target Details

Target:	STEAP3
Alternative Name:	STEAP3 (STEAP3 Products)
Background:	Background: Endosomal ferrireductase required for efficient transferrin-dependent iron uptake in erythroid cells. Participates in erythroid iron homeostasis by reducing Fe(3+) to Fe(2+). Can

Target Details

also reduce of Cu(2+) to Cu(1+), suggesting that it participates in copper homeostasis. Uses NADP(+) as acceptor. May play a role downstream of p53/TP53 to interface apoptosis and cell cycle progression. Indirectly involved in exosome secretion by facilitating the secretion of proteins such as TCTP.

Aliases: 1010001D01Rik antibody, Dudlin 2 antibody, Dudlin2 antibody, Dudulin 2 antibody, Dudulin-2 antibody, Dudulin2 antibody, h pH yde antibody, hTSAP6 antibody, Metalloreductase STEAP3 antibody, MGC93147 antibody, pH yde antibody, Six transmembrane epithelial antigen of prostate 3 antibody, Six transmembrane prostate protein 3 antibody, Six-transmembrane epithelial antigen of prostate 3 antibody, STEA 3 antibody, STEA3_HUMAN antibody, STEAP 3 antibody, STEAP family member 3 antibody, STEAP family member 3 metalloreductase antibody, STEAP3 antibody, STMP 3 antibody, STMP3 antibody, TSAP 6 antibody, TSAP6 antibody, Tumor suppressor activated pathway protein 6 antibody, Tumor suppressor pH yde antibody, Tumor suppressor-activated pathway protein 6 antibody

UniProt: [Q658P3](#)

Pathways: [Transition Metal Ion Homeostasis](#)

Application Details

Application Notes: Recommended dilution: WB:1:500-1:2000, IHC:1:20-1:200, IF:1:50-1:200,

Restrictions: For Research Use only

Handling

Format: Liquid

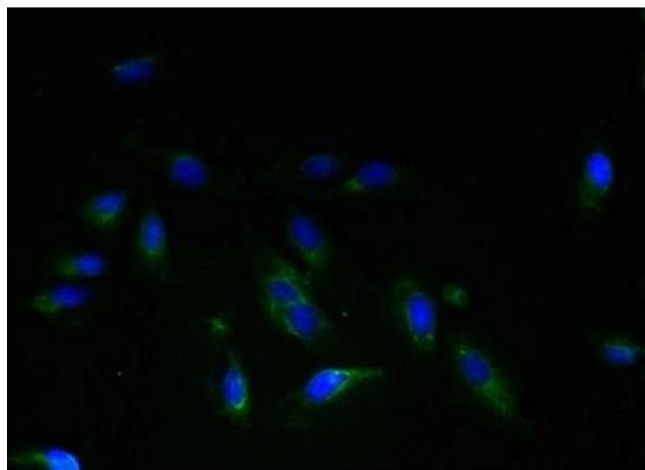
Buffer: Preservative: 0.03 % Proclin 300
Constituents: 50 % Glycerol, 0.01M PBS, PH 7.4

Preservative: ProClin

Precaution of Use: This product contains ProClin: a POISONOUS AND HAZARDOUS SUBSTANCE which should be handled by trained staff only.

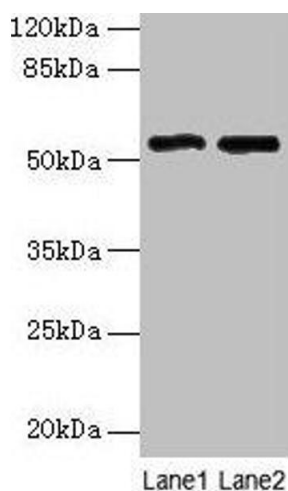
Storage: -20 °C,-80 °C

Storage Comment: Upon receipt, store at -20°C or -80°C. Avoid repeated freeze.



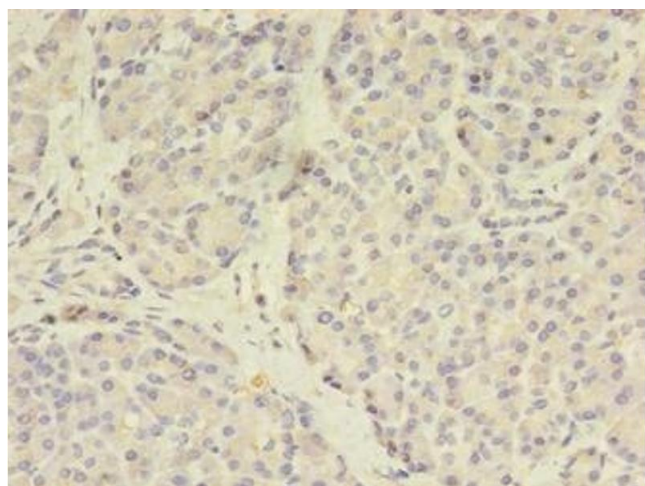
Immunofluorescence

Image 1. Immunofluorescent analysis of HeLa cells using ABIN7159505 at dilution of 1:100 and Alexa Fluor 488-conjugated AffiniPure Goat Anti-Rabbit IgG(H+L)



Western Blotting

Image 2. Western blot All lanes: STEAP3 antibody at 24 μ g/mL Lane 1: HepG2 whole cell lysate Lane 2: HeLa whole cell lysate Secondary Goat polyclonal to rabbit IgG at 1/10000 dilution Predicted band size: 55, 56, 51 kDa Observed band size: 55 kDa



Immunohistochemistry

Image 3. Immunohistochemistry of paraffin-embedded human pancreatic tissue using ABIN7159505 at dilution of 1:100