



[Go to Product page](#)

Datasheet for ABIN7159525
anti-MT1G antibody (AA 1-59)

1 Image

Overview

Quantity:	100 µg
Target:	MT1G
Binding Specificity:	AA 1-59
Reactivity:	Human
Host:	Rabbit
Clonality:	Polyclonal
Conjugate:	This MT1G antibody is un-conjugated
Application:	ELISA, Immunohistochemistry (IHC)

Product Details

Immunogen:	Recombinant Human Metallothionein-1G protein (1-59AA)
Isotype:	IgG
Cross-Reactivity:	Human
Purification:	>95%, Protein G purified

Target Details

Target:	MT1G
Alternative Name:	MT1G (MT1G Products)
Background:	Background: Metallothioneins have a high content of cysteine residues that bind various heavy metals, these proteins are transcriptionally regulated by both heavy metals and glucocorticoids.

Target Details

Aliases: Metallothionein-1G antibody, Metallothionein-1K antibody, Metallothionein-IG antibody, MT-1G antibody, MT-1K antibody, MT-IG antibody, MT1G antibody, MT1G_HUMAN antibody

UniProt: [P13640](#)

Application Details

Application Notes: Recommended dilution: IHC:1:20-1:200,

Restrictions: For Research Use only

Handling

Format: Liquid

Buffer: Preservative: 0.03 % Proclin 300
Constituents: 50 % Glycerol, 0.01M PBS, PH 7.4

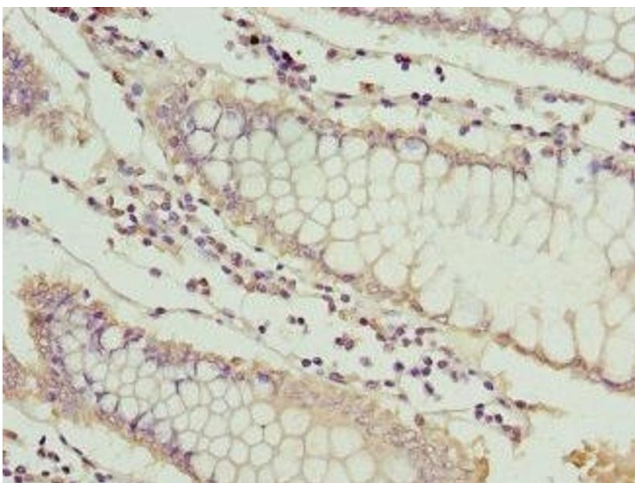
Preservative: ProClin

Precaution of Use: This product contains ProClin: a POISONOUS AND HAZARDOUS SUBSTANCE which should be handled by trained staff only.

Storage: -20 °C,-80 °C

Storage Comment: Upon receipt, store at -20°C or -80°C. Avoid repeated freeze.

Images



Immunohistochemistry

Image 1. Immunohistochemistry of paraffin-embedded human colon cancer using ABIN7159525 at dilution of 1:100