

Datasheet for ABIN7159545
anti-MT3 antibody (AA 1-68)[Go to Product page](#)

2 Images

Overview

Quantity:	100 µg
Target:	MT3
Binding Specificity:	AA 1-68
Reactivity:	Human
Host:	Rabbit
Clonality:	Polyclonal
Conjugate:	This MT3 antibody is un-conjugated
Application:	ELISA, Immunohistochemistry (IHC), Immunofluorescence (IF)

Product Details

Immunogen:	Recombinant Human Metallothionein-3 protein (1-68AA)
Isotype:	IgG
Cross-Reactivity:	Human
Purification:	>95%, Protein G purified

Target Details

Target:	MT3
Alternative Name:	MT3 (MT3 Products)
Background:	Background: Binds heavy metals. Contains three zinc and three copper atoms per polypeptide chain and only a negligible amount of cadmium. Inhibits survival and neurite formation of

Target Details

cortical neurons in vitro.

Aliases: GIF antibody, GIFB antibody, GRIF antibody, Growth inhibitory factor antibody, Metallothionein 3 (growth inhibitory factor (neurotrophic)) antibody, Metallothionein 3 antibody, Metallothionein III antibody, Metallothionein-3 antibody, Metallothionein-III antibody, Mt 3 antibody, MT III antibody, MT-3 antibody, MT-III antibody, MT3 antibody, MT3_HUMAN antibody, ZnMT3 antibody

UniProt: [P25713](#)

Pathways: [Hormone Transport](#), [Transition Metal Ion Homeostasis](#), [Regulation of Cell Size](#), [Regulation of Carbohydrate Metabolic Process](#), [Protein targeting to Nucleus](#)

Application Details

Application Notes: Recommended dilution: IHC:1:200-1:500, IF:1:50-1:200,

Restrictions: For Research Use only

Handling

Format: Liquid

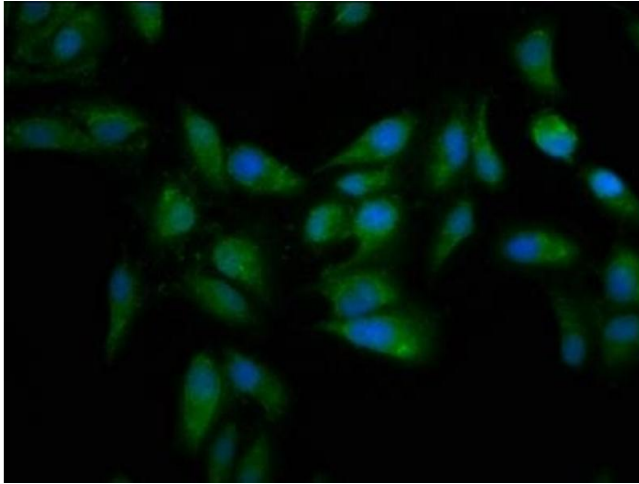
Buffer: Preservative: 0.03 % Proclin 300
Constituents: 50 % Glycerol, 0.01M PBS, pH 7.4

Preservative: ProClin

Precaution of Use: This product contains ProClin: a POISONOUS AND HAZARDOUS SUBSTANCE which should be handled by trained staff only.

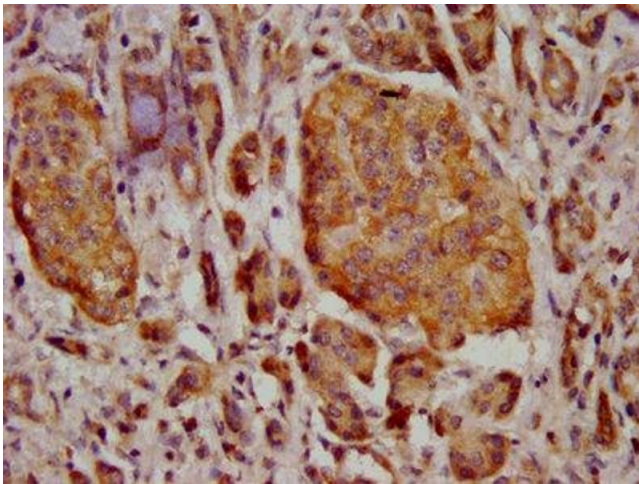
Storage: -20 °C,-80 °C

Storage Comment: Upon receipt, store at -20°C or -80°C. Avoid repeated freeze.



Immunofluorescence

Image 1. Immunofluorescence staining of HeLa cells with ABIN7159545 at 1:133, counter-stained with DAPI. The cells were fixed in 4% formaldehyde, permeabilized using 0.2% Triton X-100 and blocked in 10% normal Goat Serum. The cells were then incubated with the antibody overnight at 4°C. The secondary antibody was Alexa Fluor 488-conjugated AffiniPure Goat Anti-Rabbit IgG(H+L).



Immunohistochemistry

Image 2. IHC image of ABIN7159545 diluted at 1:400 and staining in paraffin-embedded human pancreatic cancer performed on a Leica Bond™ system. After dewaxing and hydration, antigen retrieval was mediated by high pressure in a citrate buffer (pH 6.0). Section was blocked with 10% normal goat serum 30min at RT. Then primary antibody (1% BSA) was incubated at 4°C overnight. The primary is detected by a biotinylated secondary antibody and visualized using an HRP conjugated SP system.